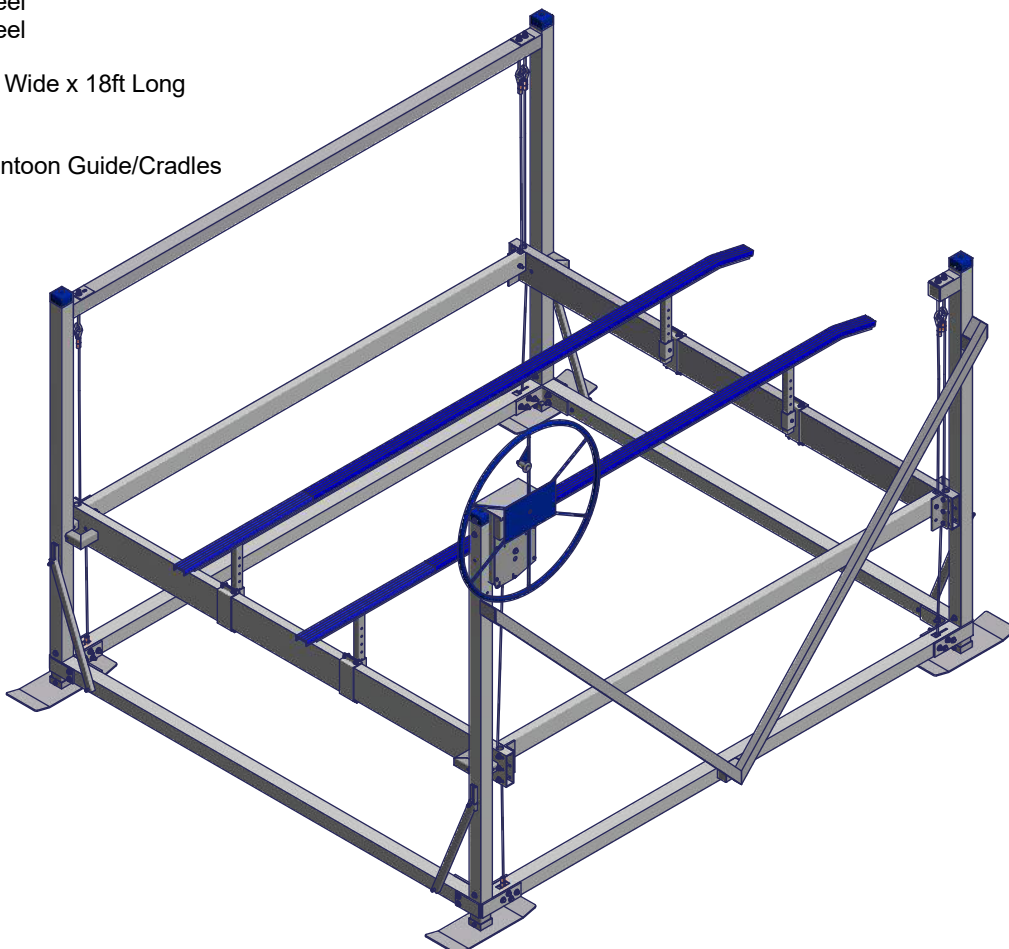


701068 Vertical Lift

Frame Assembly Instructions.

Model: 701068 - 10ft Wide
7000lb Capacity
1007101 - With Winch/Wheel
1028136 - With Winch no Wheel
1007132 - Without Winch/Wheel

Model: 701168 Pontoon - 11ft Wide x 18ft Long
7000lb Capacity
1024770 - With Winch
1024852 - With Winch and Pontoon Guide/Cradles



⚠ WARNING - PUT SAFETY FIRST

1. NOT COMPLYING WITH THE PROCEDURES AND PRECAUTIONS OUTLINED IN THIS MANUAL MAY RESULT IN PERSONAL INJURY OR DEATH AND WILL INVALIDATE THE WARRANTY.
2. Before attempting to install or operate this hoist, study and fully understand the proper operating procedures and safety precautions outlined in this owner's manual.
3. Never exceed the recommended weight capacity of your lift. The lifted weight will include hull, engine, fuel, battery, and added accessories or gear. Weigh your fully loaded boat at a certified scale to be absolutely sure of the total weight.
4. To avoid personal injury or death do not allow anyone on, in or under the lift while operating.
5. If you have any questions about assembly, installation, operation or suitability of this product, contact an authorized dealer or ShoreMaster directly at 1-800-328-8945.

PARTS LIST

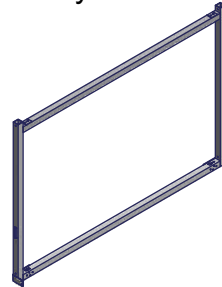
Lift Side Opposite
(Pontoon)
Qty. 1



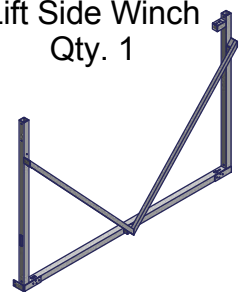
Lift Side Winch
(Pontoon)
Qty. 1



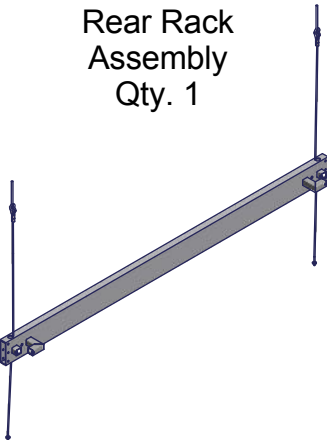
Lift Side Opposite
Qty. 1



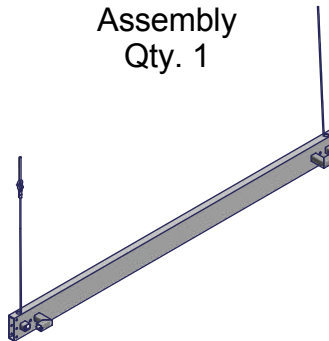
Lift Side Winch
Qty. 1



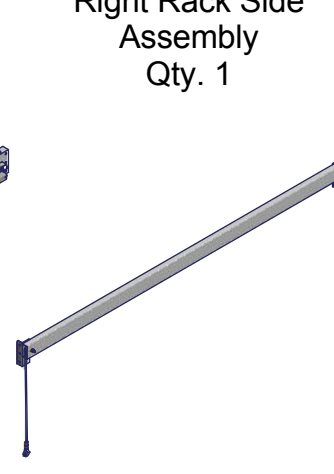
Rear Rack
Assembly
Qty. 1



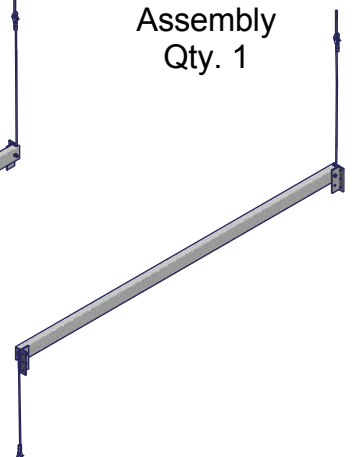
Front Rack
Assembly
Qty. 1



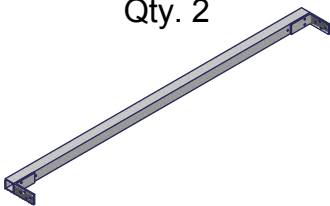
Right Rack Side
Assembly
Qty. 1



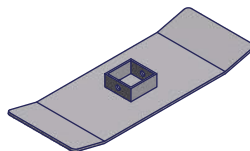
Left Rack Side
Assembly
Qty. 1



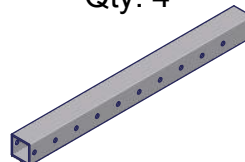
Bottom Beam
Qty. 2



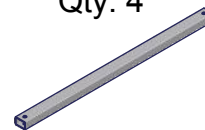
Foot Pad
Qty. 4



Leg Post
Qty. 4



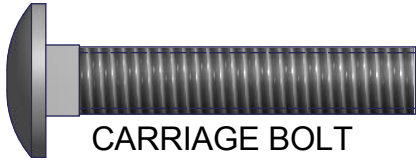
Vertical Lift
Brace
Qty. 4



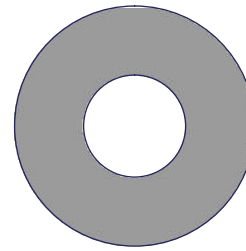
Slip Over Cap
Qty. 4



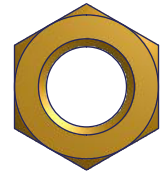
FASTENERS AND HARDWARE



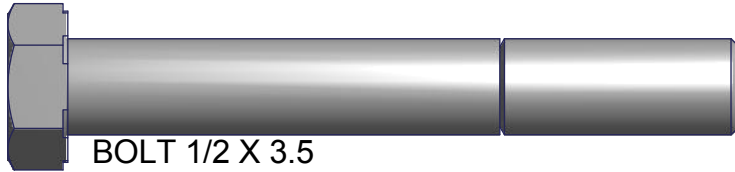
CARRIAGE BOLT
3/8 - 16 X 1.75
QTY. 4



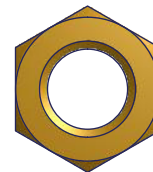
WASHER FLAT 1/2
QTY. 94



NUT 1/2
BRASS
QTY. 46



BOLT 1/2 X 3.5
QTY. 12



NUT NYLOC 1/2
BRASS
QTY. 5



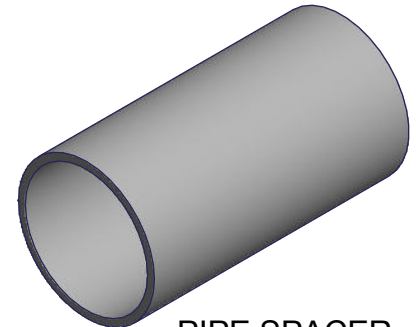
NUT FLANGE
3/8 - 16
QTY. 8



BOLT 1/2 X 4.0
QTY. 4



BOLT 1/2 X 4.5
QTY. 6



PIPE SPACER
QTY. 12

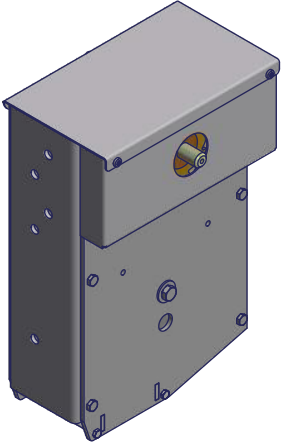


BOLT 3/8 - 16 X 5.0
QTY. 4



BOLT 1/2 X 5.5
QTY. 24

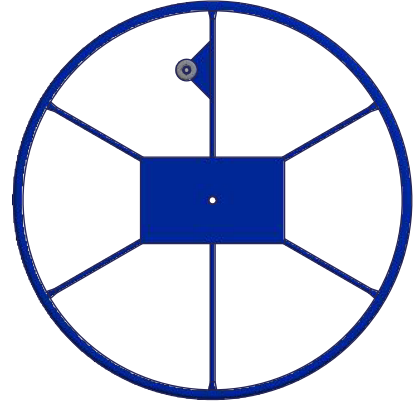
WINCH PARTS



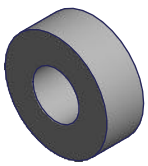
WINCH 7000
QTY. 1



WINCH MOUNTING
PLATE
QTY. 1



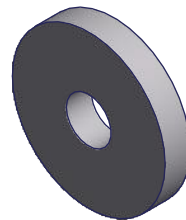
WHEEL
QTY. 1



3/4 x 1/4 Alum
Spacer
Qty. 1



5/16 x 1-1/4 Hex Bolt
Qty. 1



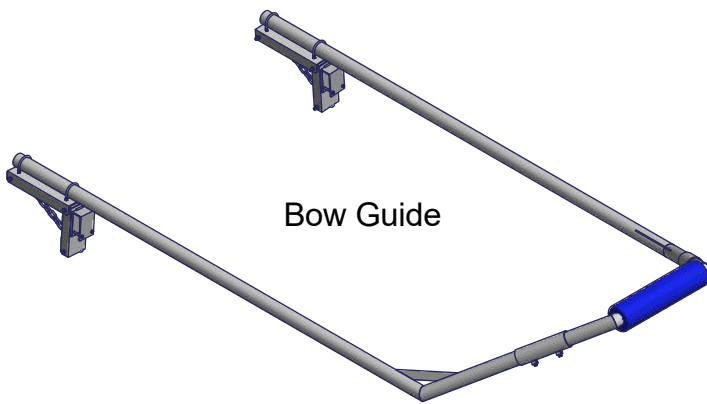
.34 x 1-1/8 Alum
Washer
Qty. 1



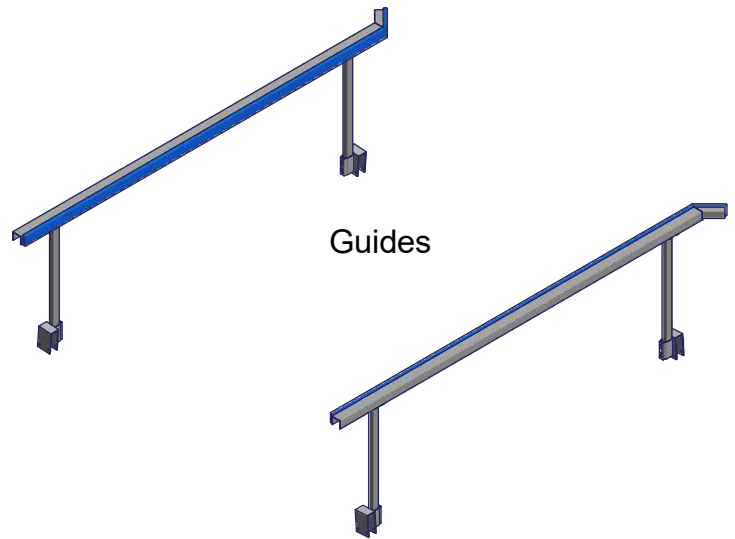
5/16 Flat Washer
Qty. 6

Vertical Lift Accessories

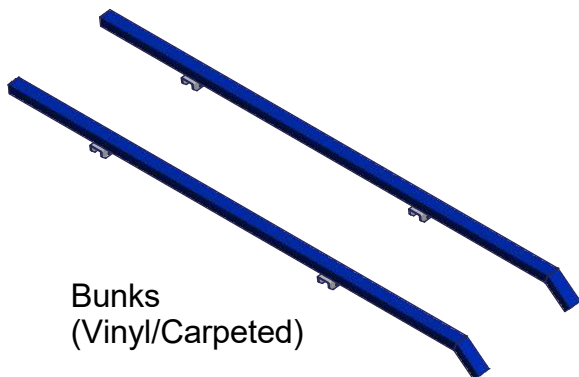
(see dealer for more options)



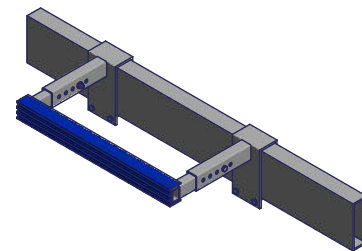
Bow Guide



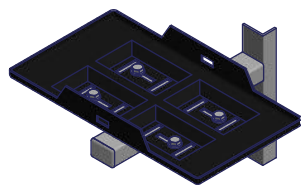
Guides



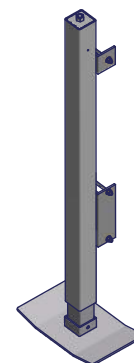
Bunks
(Vinyl/Carpeted)



Motor Stop



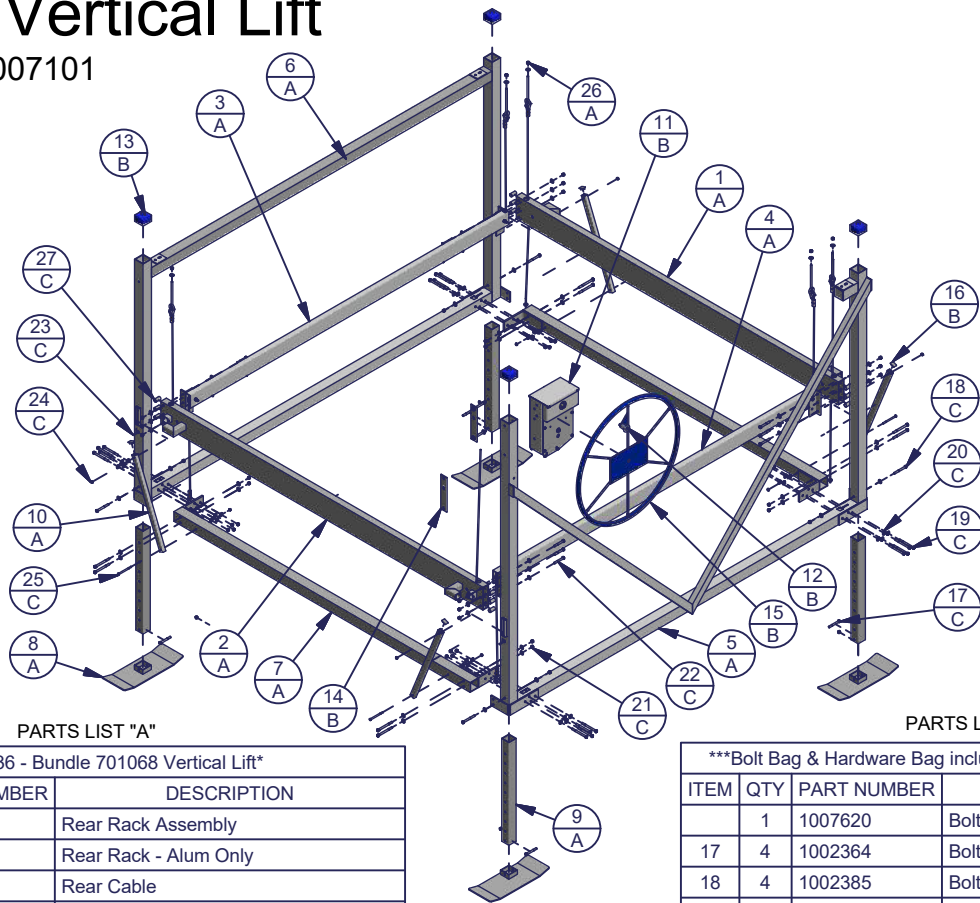
Battery Tray



Screw Legs

701068 Vertical Lift

Part Number: 1007101



PARTS LIST "A"

1003936 - Bundle 701068 Vertical Lift			
ITEM	QTY	PART NUMBER	DESCRIPTION
1	1	1003372	Rear Rack Assembly
	1	1007785	Rear Rack - Alum Only
2	1	1021309	Rear Cable
	4	1007519	Bolt 3/4 x 4.0 w/Zerk
2	1	1003371	Front Rack Assembly
	1	1021297	Winch Cable
	1	1007784	Front Rack - Alum Only
3	1	1003374	Right Rack Side Assembly
	1	1021302	Side Cable
	1	1007783	Right Rack Side - Alum Only
4	1	1003373	Left Rack Side Assembly
	1	1021302	Side Cable
	1	1007782	Left Rack Side - Alum Only
5	1	1003642	Lift Side Winch
6	1	1003643	Lift Side Opposite
7	2	1007376	Bottom Beam
8	4	1007409	Foot Pad - I
9	4	1004744	Leg Post - I3
10	4	1003084	Vertical Lift Brace

PARTS LIST "B"

1007045 - Winch Hardware Box			
ITEM	QTY	PART NUMBER	DESCRIPTION
11	1	1007374	WINCH 7000
12	1	1007716	WHEEL SPACER KIT
13	4	1001827	BLUE CAP 3.425 X 3.425
14	1	1004880	Prt Plate 12.0 - Winch Mounting Support
15	1	1007201	Assy Lift Wheel Large Blue
16	4	1000986	Cap Press-In 1.125x1.625

PARTS LIST "C"

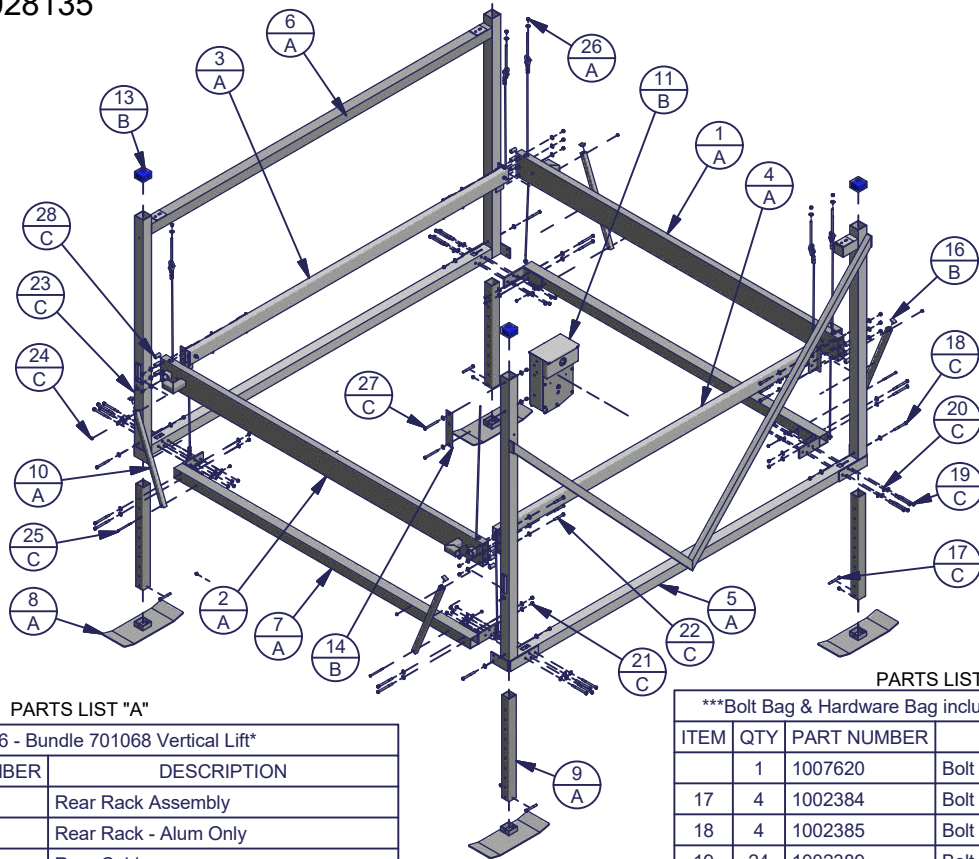
Bolt Bag & Hardware Bag included in Hardware Box			
ITEM	QTY	PART NUMBER	DESCRIPTION
	1	1007620	Bolt Bag
17	4	1002364	Bolt 1/2 X 4.0
18	4	1002385	Bolt 1/2 x 4.5
19	24	1002389	Bolt 1/2 x 5.5
20	94	1002565	Washer Flat 1/2
21	46	1001792	Nut 1/2 Brass
22	12	1002383	Bolt 1/2 x 3.5
23	4	1001959	Bolt Carriage 3/8-16 x 1.75 SS
24	8	1001802	Nut Flange 3/8-16 Brass
25	2	1002444	Bolt Hex 3/8-16 x 5.0 SS 304
26	5	1001795	Nut Nyloc 1/2-13 Brass
	1	1007511	Hardware Bag
27	12	1003504	Pipe Spacer

PULLEY/RACK PARTS

QTY	PART NUMBER	DESCRIPTION
4	1006914	Bushing (Rear)
6	1002209	Sheave 7.25 (Front & Rear)
4	1006913	Bushing (Front)
4	1006916	Sheave 3.75
8	1006908	Bushing (Side)
4	1001795	Nut Nyloc 1/2
4	1002383	Bolt 1/2 x 3.5
4	1007519	Bolt 3/4 x 4.0 w/ Zerk
4	1002706	UHMW Roller
2	1002427	3/8-16 x 2.5 Hex Bolt
2	1002592	3/4-10 Nylock Nut

701068 Vertical Lift Less Wheel

Part Number: 1028135



PARTS LIST "A"

1003936 - Bundle 701068 Vertical Lift			
ITEM	QTY	PART NUMBER	DESCRIPTION
1	1	1003372	Rear Rack Assembly
	1	1007785	Rear Rack - Alum Only
2	1	1021309	Rear Cable
	4	1007519	Bolt 3/4 x 4.0 w/Zerk
2	1	1003371	Front Rack Assembly
	1	1021297	Winch Cable
	1	1007784	Front Rack - Alum Only
3	1	1003374	Right Rack Side Assembly
	1	1021302	Side Cable
	1	1007783	Right Rack Side - Alum Only
4	1	1003373	Left Rack Side Assembly
	1	1021302	Side Cable
	1	1007782	Left Rack Side - Alum Only
5	1	1003642	Lift Side Winch
6	1	1003643	Lift Side Opposite
7	2	1007376	Bottom Beam
8	4	1007409	Foot Pad - I
9	4	1004744	Leg Post - I3
10	4	1003084	Prt Tube 30.25 - Vertical Lift Brace

PARTS LIST "B"

1028135 - Winch Hardware Box			
ITEM	QTY	PART NUMBER	DESCRIPTION
11	1	1007374	WINCH 7000
13	4	1001827	BLUE CAP 3.425 X 3.425
14	1	1004880	Prt Plate 12.0 - Winch Mounting Support
16	4	1000986	Cap Press-In 1.125x1.625

PARTS LIST "C"

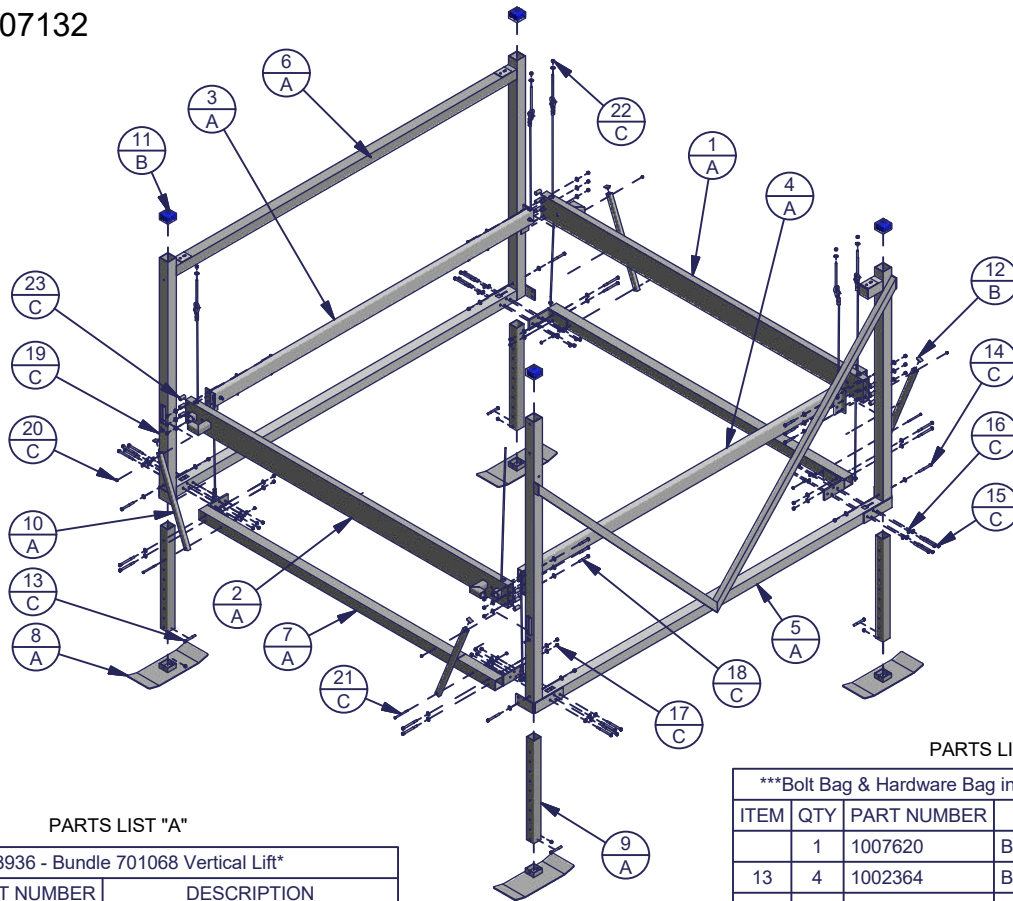
Bolt Bag & Hardware Bag included in Hardware Box			
ITEM	QTY	PART NUMBER	DESCRIPTION
	1	1007620	Bolt Bag
17	4	1002384	Bolt 1/2 X 4.0
18	4	1002385	Bolt 1/2 x 4.5
19	24	1002389	Bolt 1/2 x 5.5
20	94	1002565	Washer Flat 1/2
21	46	1001792	Nut 1/2 Brass
22	12	1002383	Bolt 1/2 x 3.5
23	4	1001959	Bolt Carriage 3/8-16 x 1.75 SS
24	8	1001802	Nut Flange 3/8-16 Brass
25	4	1002444	Bolt Hex 3/8-16 x 5.0 SS 304
26	5	1001795	Nut Nyloc 1/2-13 Brass
27	2	1002388	Bolt Hex 1/2 x 5.0 SS
	1	1007511	Hardware Bag
28	12	1003504	Pipe Spacer

PULLEY/RACK PARTS

QTY	PART NUMBER	DESCRIPTION
4	1006914	Bushing (Rear)
6	1002209	Sheave 7.25 (Front & Rear)
4	1006913	Bushing (Front)
4	1006916	Sheave 3.75
8	1006908	Bushing (Side)
4	1001795	Nut Nyloc 1/2
4	1002383	Bolt 1/2 x 3.5
4	1007519	Bolt 3/4 x 4.0 w/ Zerk
4	1002706	UHMW Roller
2	1002427	3/8-16 x 2.5 Hex Bolt
2	1002592	3/4-10 Nylock Nut

701068 Vertical Lift-Less Winch

Part Number: 1007132



PARTS LIST "A"

1003936 - Bundle 701068 Vertical Lift			
ITEM	QTY	PART NUMBER	DESCRIPTION
1	1	1003372	Rear Rack Assembly
	1	1007785	Rear Rack - Alum Only
	2	1003376	Rear Cable
	4	1007519	Bolt 3/4 x 4.0 w/Zerk
2	1	1003371	Front Rack Assembly
	1	1003375	Winch Cable
	1	1007784	Front Rack - Alum Only
3	1	1003374	Right Rack Side Assembly
	1	1003377	Side Cable
	1	1007783	Right Rack Side - Alum Only
4	1	1003373	Left Rack Side Assembly
	1	1003377	Side Cable
	1	1007782	Left Rack Side - Alum Only
5	1	1003642	Lift Side Winch
6	1	1003643	Lift Side Opposite
7	2	1007376	Bottom Beam
8	4	1007409	Foot Pad - I
9	4	1004744	Leg Post - I3
10	4	1003084	Vertical Lift Brace

PARTS LIST "B"

1004420 - Hardware Box			
ITEM	QTY	PART NUMBER	DESCRIPTION
11	4	1001827	BLUE CAP 3.425 X 3.425
12	4	1000986	Cap Press-In 1.125x1.625

PARTS LIST "C"

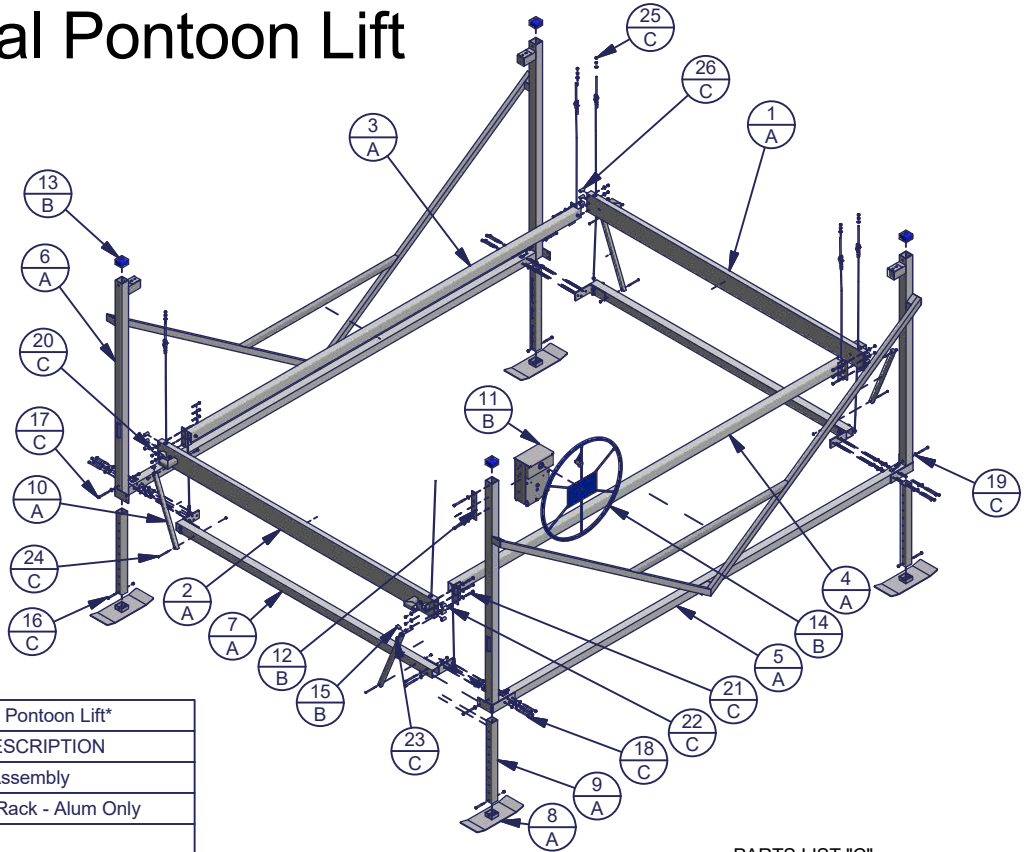
Bolt Bag & Hardware Bag included in Hardware Box			
ITEM	QTY	PART NUMBER	DESCRIPTION
	1	1007620	Bolt Bag
13	4	1002364	Bolt 1/2 X 4.0
14	4	1002385	Bolt 1/2 x 4.5
15	24	1002389	Bolt 1/2 x 5.5
16	94	1002565	Washer Flat 1/2
17	46	1001792	Nut 1/2 Brass
18	12	1002383	Bolt 1/2 x 3.5
19	4	1001959	Bolt Carriage 3/8-16 x 1.75 SS
20	8	1001802	Nut Flange 3/8-16 Brass
21	4	1002444	Bolt Hex 3/8-16 x 5.0 SS 304
22	5	1001795	Nut Nyloc 1/2-13 Brass
-	1	1007511	Hardware Bag
23	12	1003504	Pipe Spacer

PULLEY/RACK PARTS

QTY	PART NUMBER	DESCRIPTION
4	1006914	Bushing (Rear)
6	1002209	Sheave 7.25 (Front & Rear)
4	1006913	Bushing (Front)
4	1006916	Sheave 3.75
8	1006908	Bushing (Side)
4	1001795	Nut Nyloc 1/2
4	1002383	Bolt 1/2 x 3.5
4	1007519	Bolt 3/4 x 4.0 w/ Zerk
8	1002706	UHMW Roller
2	1002427	3/8-16 x 2.5 Hex Bolt
2	1002592	3/4-10 Nylock Nut

701168 Vertical Pontoon Lift

Part Number: 1024770



PARTS LIST "A"

1024771 - Bundle 701168 Vertical Pontoon Lift			
ITEM	QTY	PART NUMBER	DESCRIPTION
1	1	1024773	Rear Rack Assembly
	1	1024785	Wdmt Rear Rack - Alum Only
	2	1024784	Rear Cable
	4	1007519	Bolt 3/4 x 4.0 w/Zerk
2	1	1024772	Front Rack Assembly
	1	1024780	Winch Cable
	1	1024781	Wdmt Front Rack - Alum Only
3	1	1024775	Right Rack Side Assembly
	1	1024787	Side Cable
	1	1024791	Wdmt Right Rack Side - Alum Only
4	1	1024774	Left Rack Side Assembly
	1	1024787	Side Cable
	1	1024788	Left Rack Side - Alum Only
5	1	1024776	Lift Side Winch
6	1	1024777	Lift Side Opposite
7	2	1024778	Bottom Beam
8	4	1007409	Foot Pad - I
9	4	1004744	Leg Post - I3
10	4	1003084	Vertical Lift Brace

PARTS LIST "B"

1007045 - Winch Hardware Box			
ITEM	QTY	PART NUMBER	DESCRIPTION
11	1	1007374	WINCH 7000
12	1	1004880	Winch Support Plate
13	4	1001827	BLUE CAP 3.425 X 3.425
14	1	1007201	Assy Lift Wheel Large Blue
--	1	1007414	Assy Lift Wheel Large Blue Less Hardware
--	1	1001805	Nut Nyloc 3/8-16 Brass
--	1	1002429	Bolt Hex 3/8-16 x 2.25 SS 304
15	4	1021908	Cap Press-In 1.125x1.625 Silver No Logo

PARTS LIST "C"

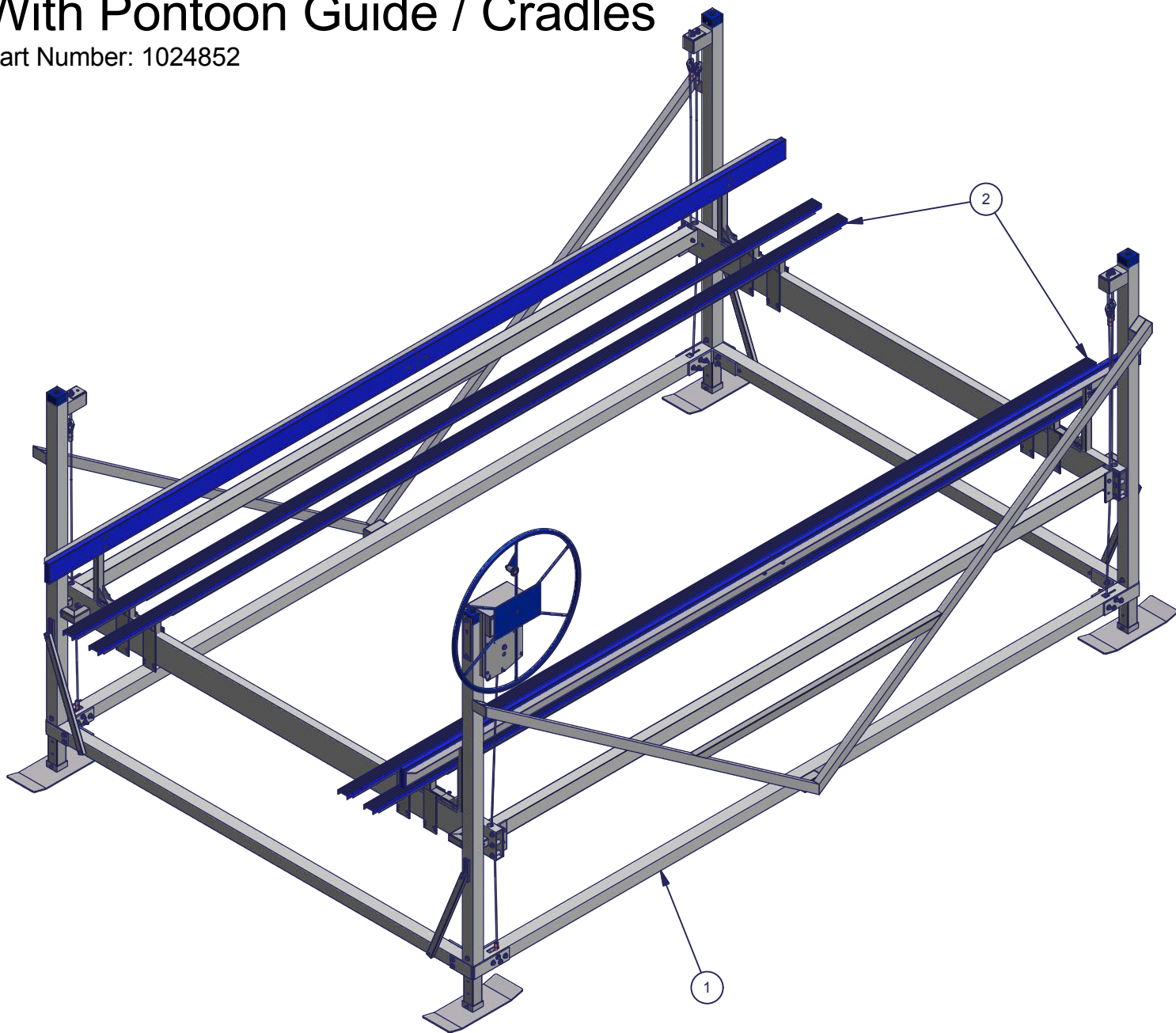
Bolt Bag & Hardware Bag included in Hardware Box			
ITEM	QTY	PART NUMBER	DESCRIPTION
-	1	1007620	Bolt Bag
16	4	1002364	Bolt 1/2 X 4.0
17	4	1002385	Bolt 1/2 x 4.5
18	24	1002389	Bolt 1/2 x 5.5
19	94	1002565	Washer Flat 1/2
20	46	1001792	Nut 1/2 Brass
21	12	1002383	Bolt 1/2 x 3.5
22	4	1001959	Bolt Carriage 3/8-16 x 1.75 SS
23	8	1001802	Nut Flange 3/8-16 Brass
24	4	1002444	Bolt Hex 3/8-16 x 5.0 SS 304
25	5	1001795	Nut Nyloc 1/2-13 Brass
-	1	1007511	Hardware Bag
26	12	1003504	Pipe Spacer

PULLEY/RACK PARTS

QTY	PART NUMBER	DESCRIPTION
4	1006914	Bushing (Rear)
6	1024009	Sheave 7.25 (Front & Rear)
4	1006913	Bushing (Front)
4	1004657	Sheave 3.5
4	1006908	Short Bushing (Side)
4	1024801	Long Bushing (Side)
4	1001795	Nut Nyloc 1/2
4	1002387	Bolt 1/2 x 4.25
4	1007519	Bolt 3/4 x 4.0 w/ Zerk

701168 Vertical Pontoon Lift With Pontoon Guide / Cradles

Part Number: 1024852



Parts List

ITEM	QTY	PART NUMBER	DESCRIPTION
1	1	1024770	701168 Pontoon Vertical Lift w/ Aluminum Winch
2	1	1024811	Pontoon Guide / Cradle Bracket 7K Complete

Frame Assembly Instructions

⚠ WARNING - PUT SAFETY FIRST

NOT COMPLYING WITH THE PROCEDURES AND PRECAUTIONS OUTLINED IN THIS MANUAL MAY RESULT IN PERSONAL INJURY OR DEATH AND WILL INVALIDATE THE WARRANTY.

Your safety is the most important issue related to this product.

- Fully read and understand each step before proceeding with that step.
- Wear protective gloves, clothing and eyewear when assembling and installing the lift.
- Do not assemble, install or use this product if items are missing or damaged.

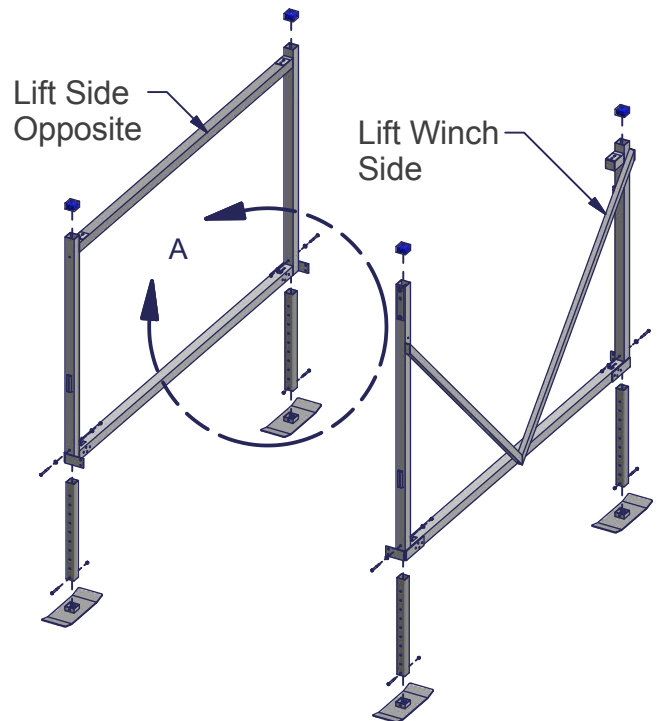
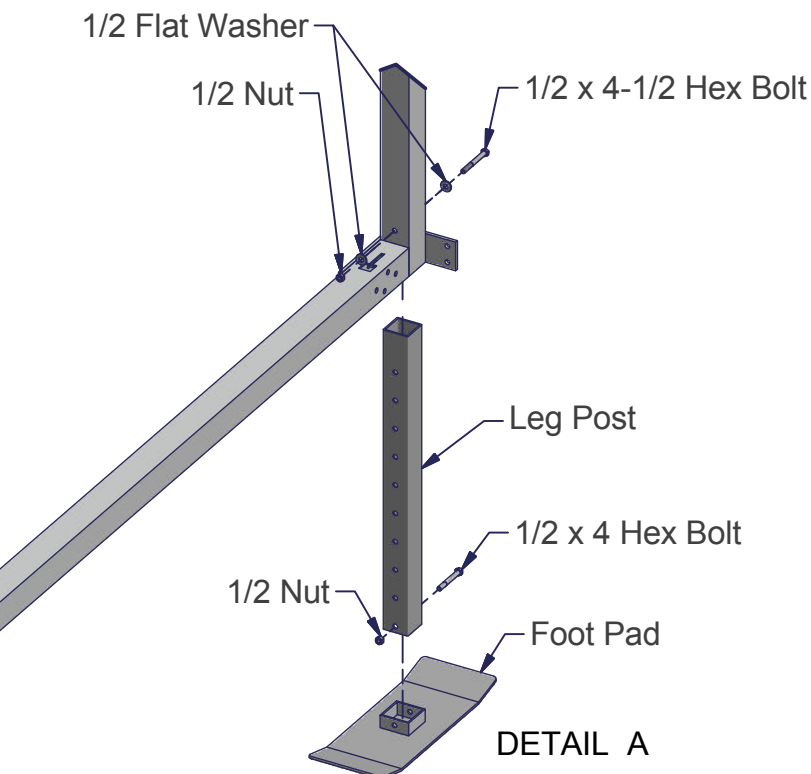
For ease of assembly find a flat area with plenty of room to assemble lift. The following tools will be needed for assembling lift:

1. Two 7/16" Wrenches
2. Two 9/16" Wrenches
3. 3/4" Wrench
4. Measuring Tape
5. Hammer
6. 3/16" Allen Wrench
7. Tin Snips (to open bundle)

Only hand tighten bolts and nuts until lift is completely assembled.

STEP 1

Slip Blue Caps on Uprights as shown. Insert all four Leg Posts into Foot Pads. Secure using one 1/2 x 4 Hex Bolts and one 1/2 Nut in each place. Insert Leg Posts into Lift Sides as shown. Secure with one 1/2 x 4-1/2 Hex Bolt, two 1/2 Flat Washers and one 1/2 Nut for each Leg Post.

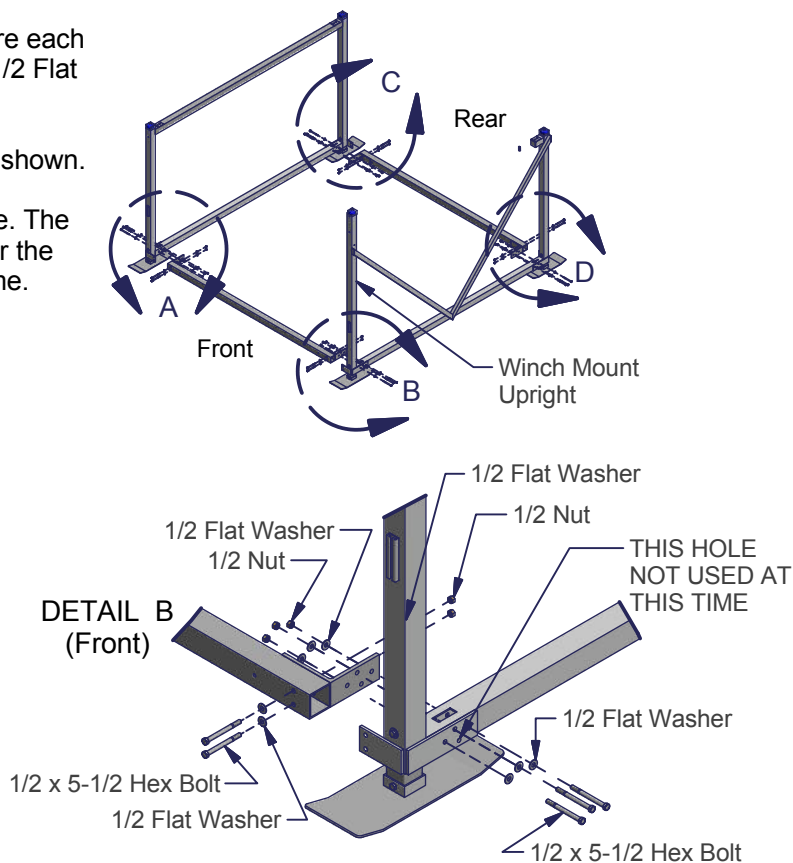
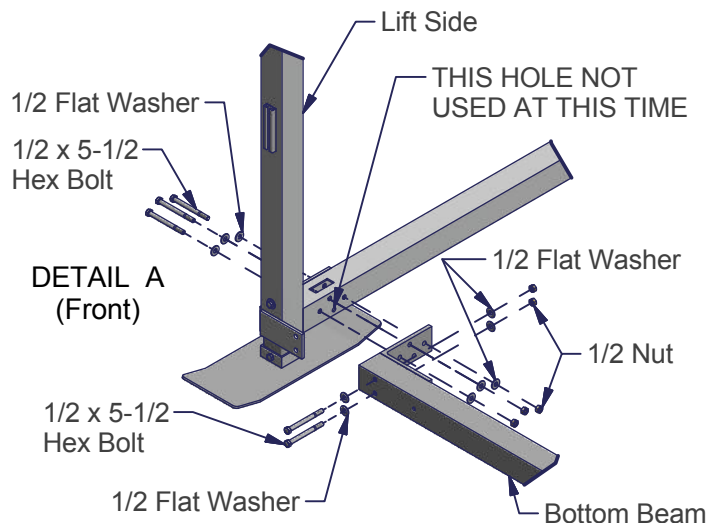


STEP 2

Attach one Bottom Beam to the front of both Lift Sides. Secure each end of the Bottom Beam with five 1/2 x 5-1/2 Hex Bolts, ten 1/2 Flat Washers and five 1/2 Nuts - as shown in Detail "A" and "B."

Note: The front is indicated by the Winch Mount Upright - as shown.

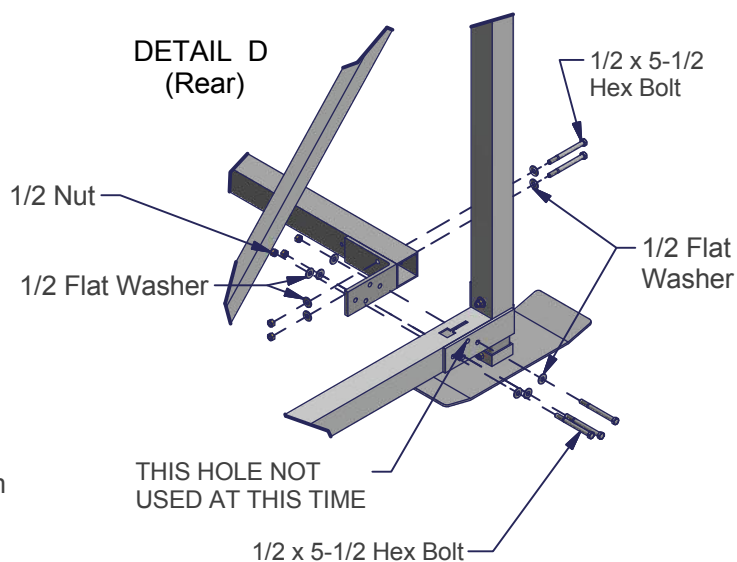
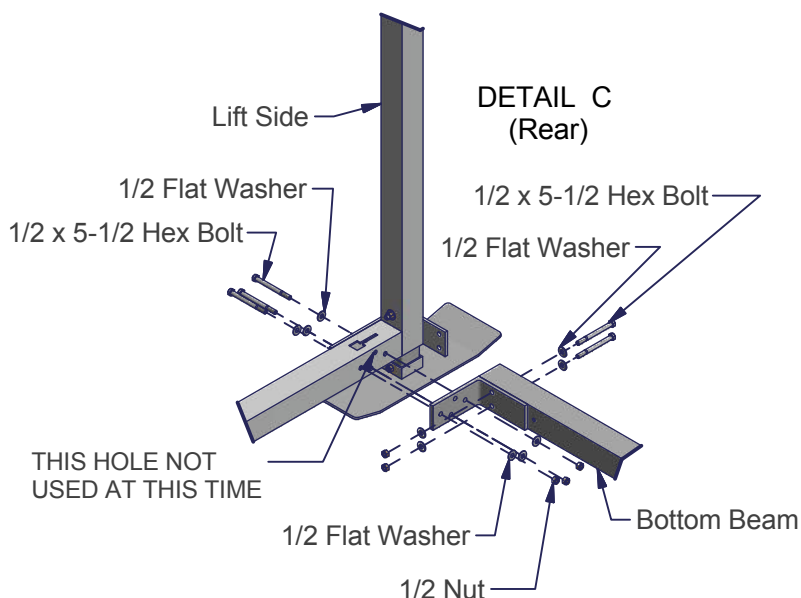
Note: Bolt only five of the six holes at each corner at this time. The remaining hole will be used in a later step. See each detail for the one connection hole (in each front corner) not used at this time.



STEP 3

Attach the Bottom Beam to rear of the Lift Sides. Secure with five 1/2 x 5-1/2 Hex Bolts, ten 1/2 Flat Washers and five 1/2 Nuts - as shown in Detail "C" & "D."

Note: Bolt only five of the six holes at each corner at this time. The remaining hole will be used in a later step. See each detail for the one connection hole (in each rear corner) not used at this time.



VERTICAL BOAT LIFTS



STEP 4

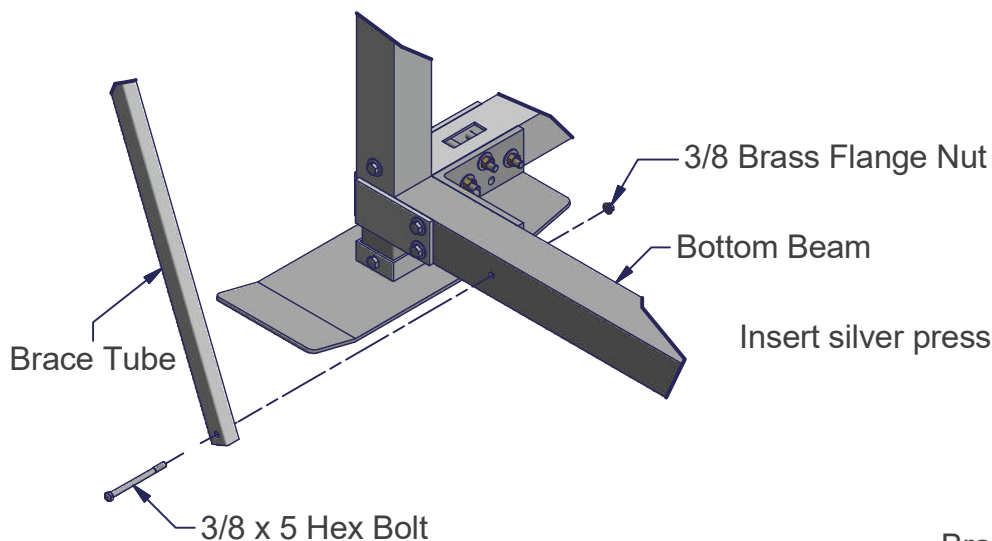
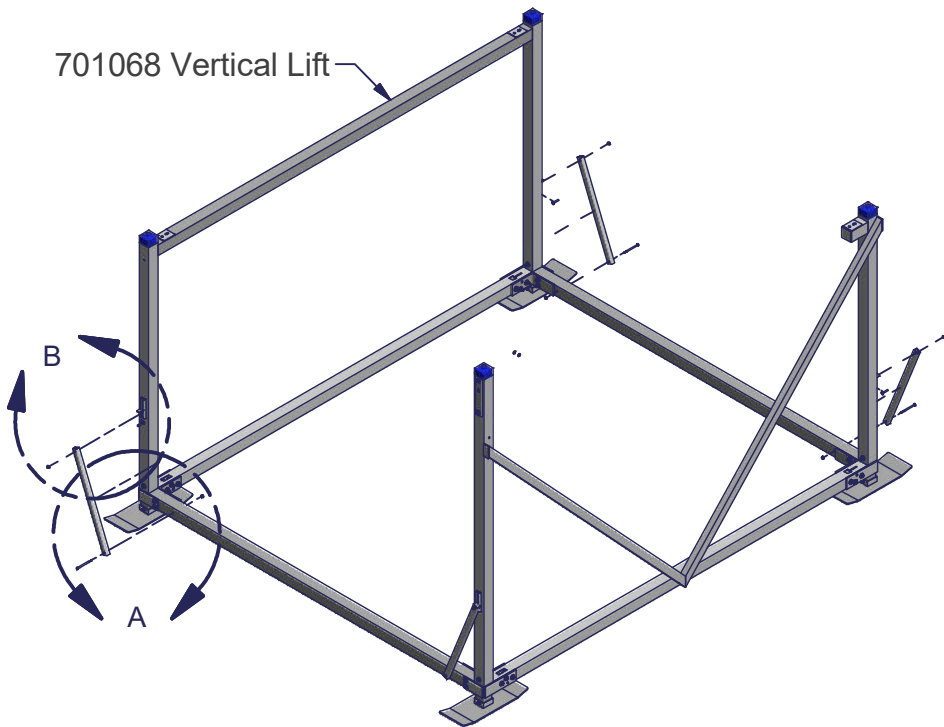
Attach the Brace Tube to the Lift Sides and Bottom Beams.

Secure each Brace Tube to the Bottom Beams with one 3/8 x 5 Hex Bolt, and one 3/8 Brass Flange Nut - as shown in Detail "A."

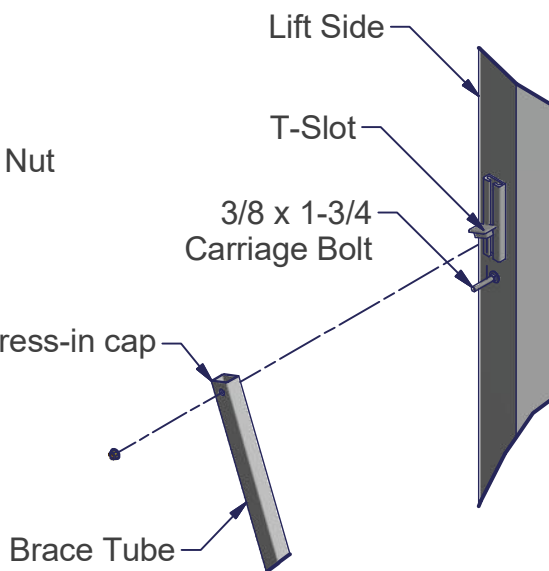
Secure each Brace Tube to the T-Slot of the Lift Sides with one 3/8 x 1 3/4 Carriage Bolt and one 3/8 Brass Flange Nut - as shown in Detail "B."

Press one silver cap into the top of each brace tube.

701068 Vertical Lift



DETAIL A



DETAIL B

Note: Take two measurements between the two Lift Sides, one at the top and one at the bottom. The measurement should be the same at the top and bottom of the Lift Sides.

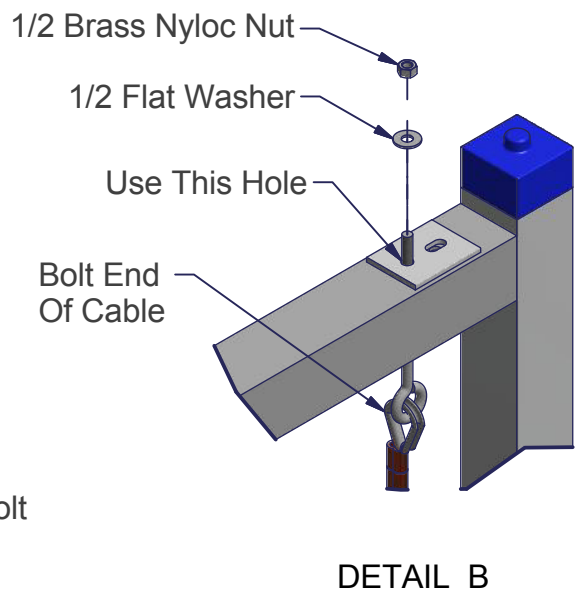
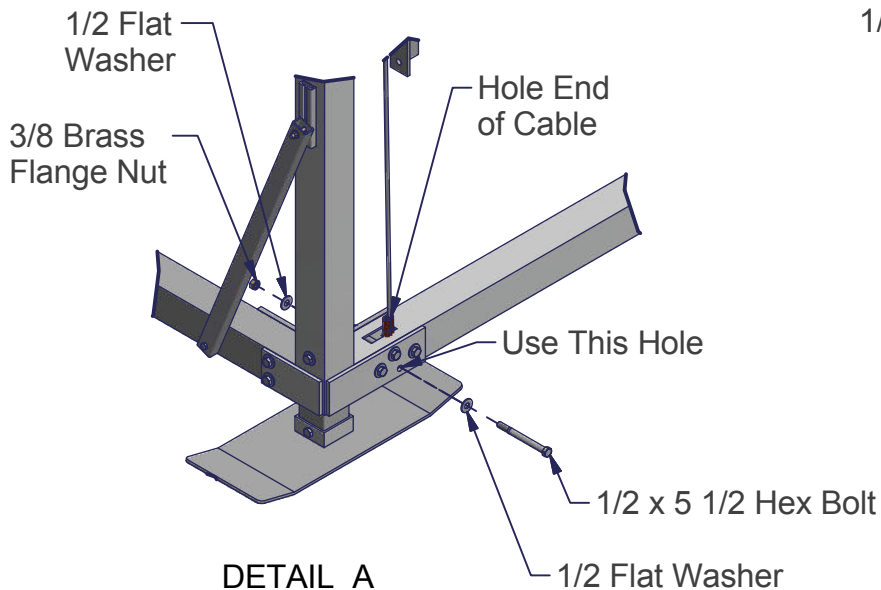
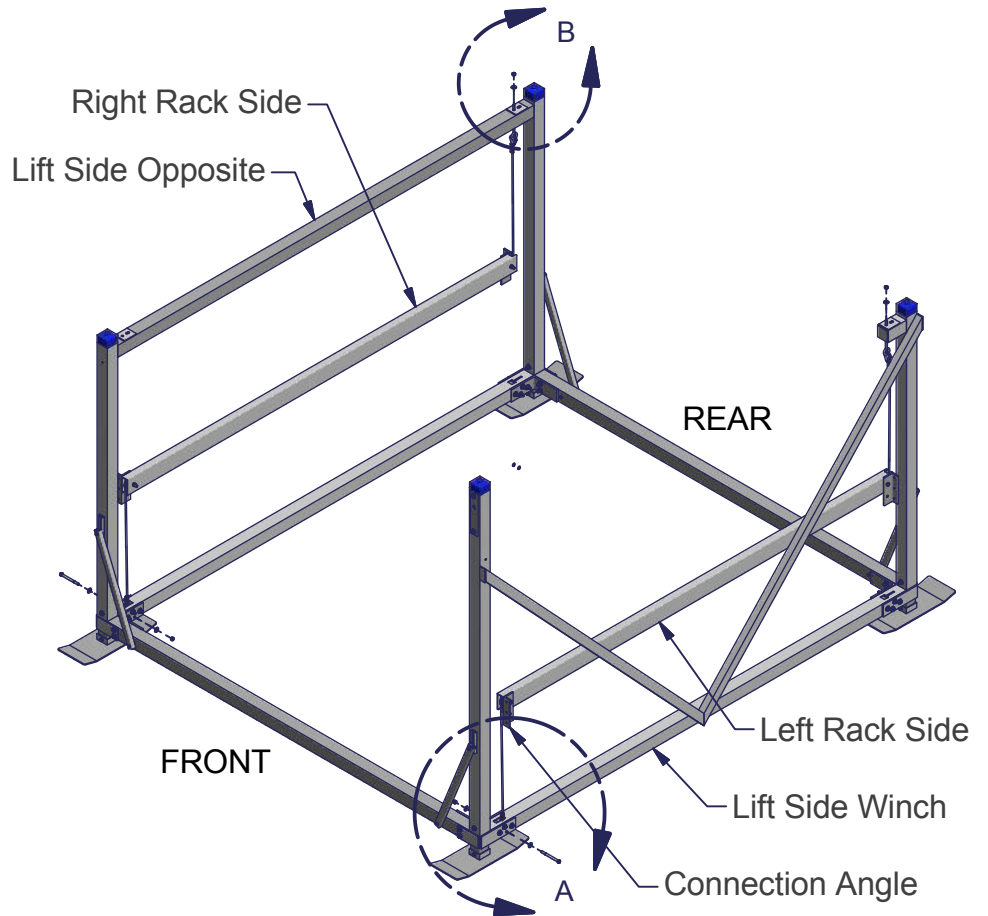
STEP 5

Place the Rack Sides in the Lift Sides as shown with Connection Angles facing out.

Set the Hole end of the cable into the slot in the front of the lift side. Secure with one 1/2 x 5 1/2 Hex Bolt, two 1/2 Flat Washers and one 1/2 Nut - as shown in Detail "A."

Insert the Bolt end of the cable through the hole in the top of the Lift Side in the rear of the lift. Secure with one 1/2 Flat Washer and one 1/2 Brass Nyloc Nut.

Note: Be sure washer is in place and that the Nuts are tightened so at least 1/4" of Bolt thread is exposed on the bolt end of the cable.



VERTICAL BOAT LIFTS



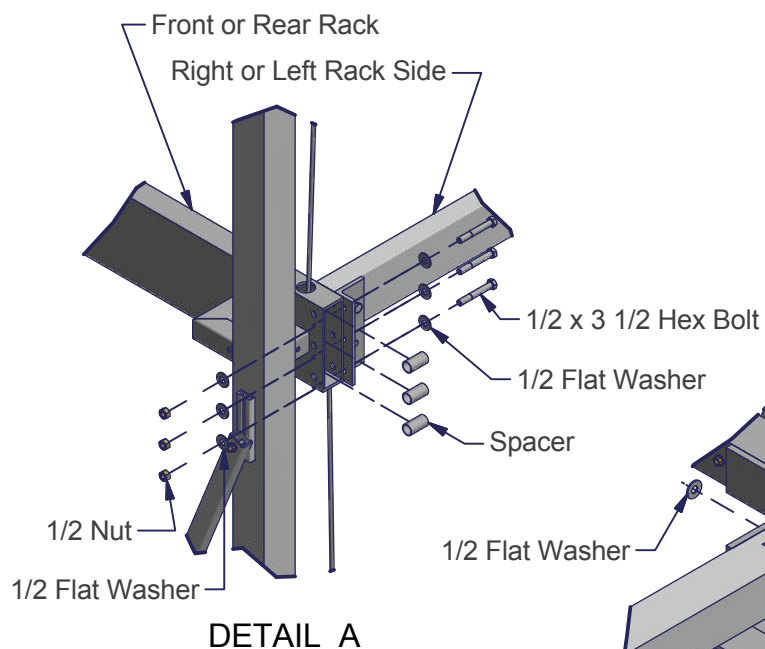
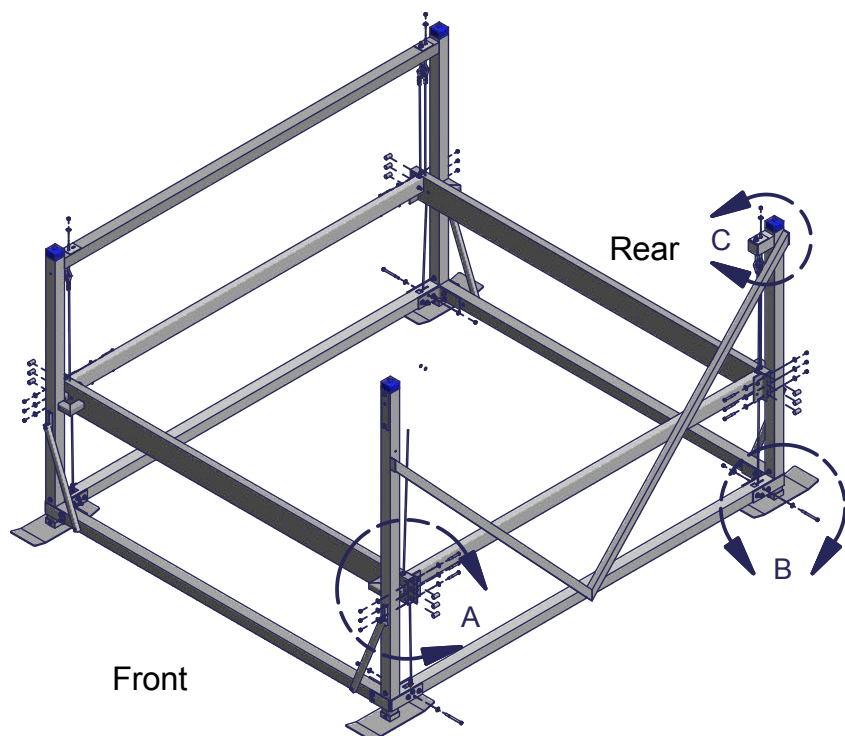
STEP 6

Attach the Front and Rear Racks to the Rack Sides. Secure at each end with three 1/2 x 3 1/2 Hex Bolts, three Spacers, six 1/2 Flat Washers and two 1/2 Nuts - as shown in Detail "A."

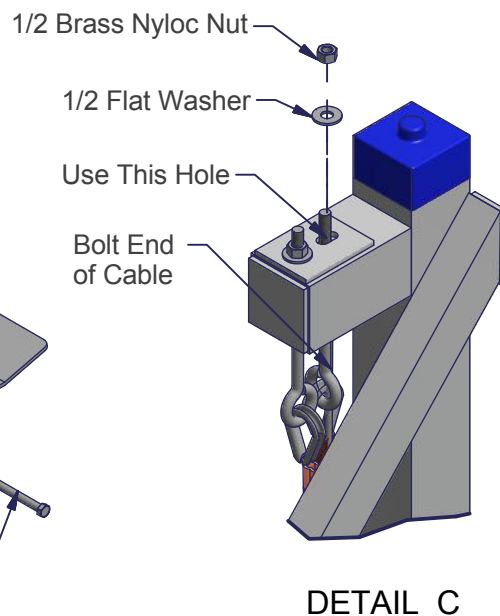
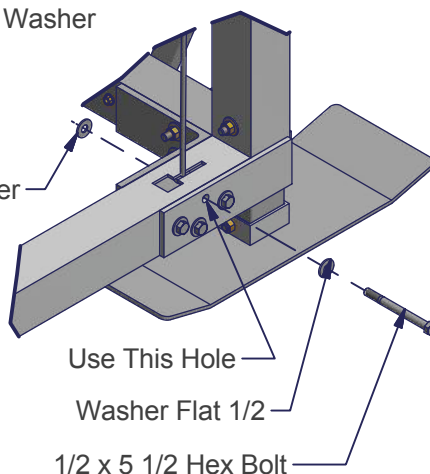
Note: Rack Side Angles should face out and down.

Secure bottom end of the Rear Rack cables to the Lift Sides by inserting the washer on the end of the cable into the large hole in the slot and slide it to the back of the slot secure with one 1/2 x 5 1/2 Hex Bolt, two 1/2 Flat Washers and one 1/2 Nut - as shown in Detail "B." The bolt should hold the cable from coming out of the slot.

Insert the Bolt End of the Front and Rear Rack cables through the specified hole in the top of the Lift Sides. Secure each cable with one 1/2 Flat Washer and one 1/2 Brass Nyloc Nut as shown in Detail "C."



DETAIL B



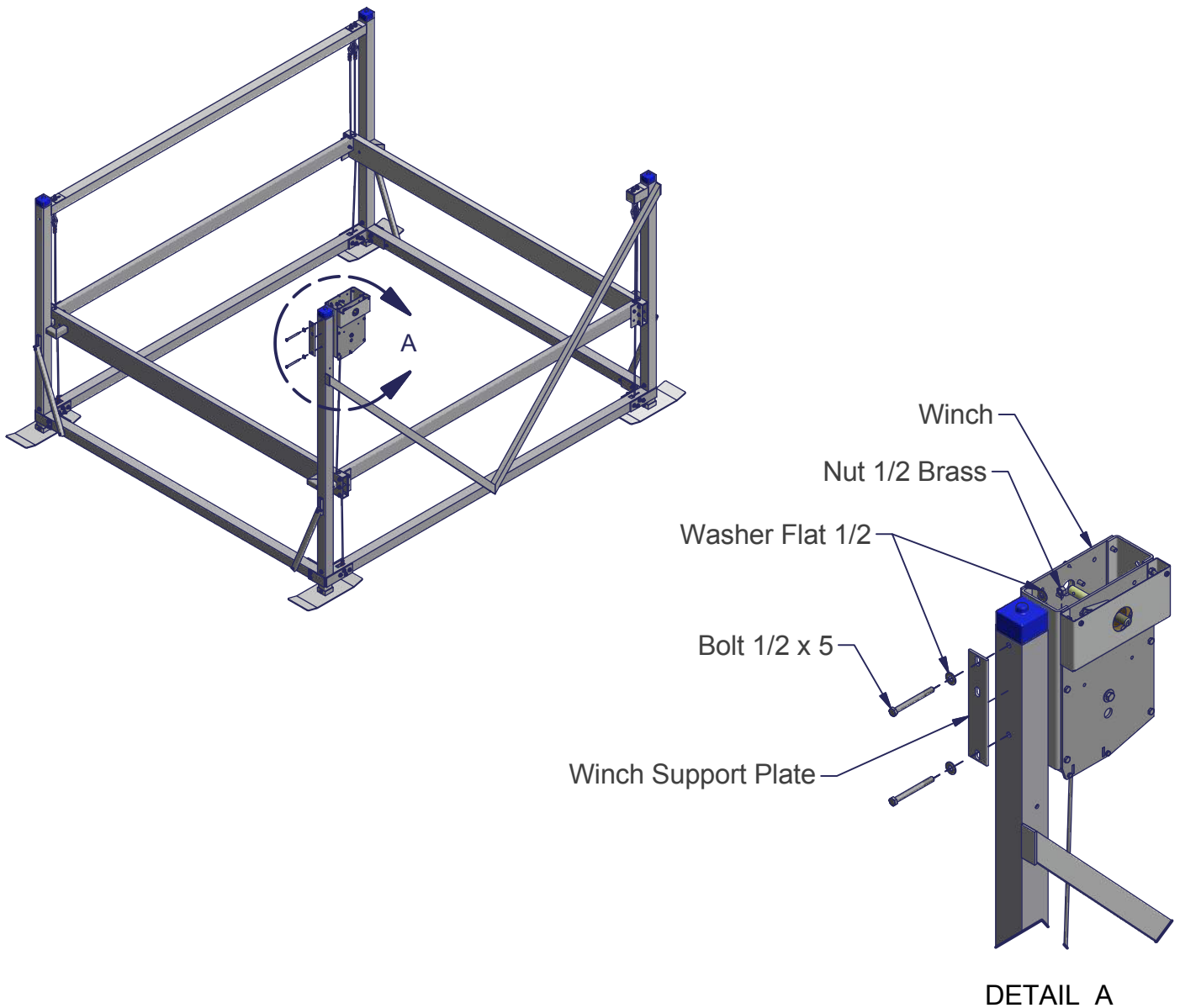
WINCH / WHEEL INSTRUCTIONS

STEP 1

Remove the Winch Cover by unscrewing the three screws.

STEP 2

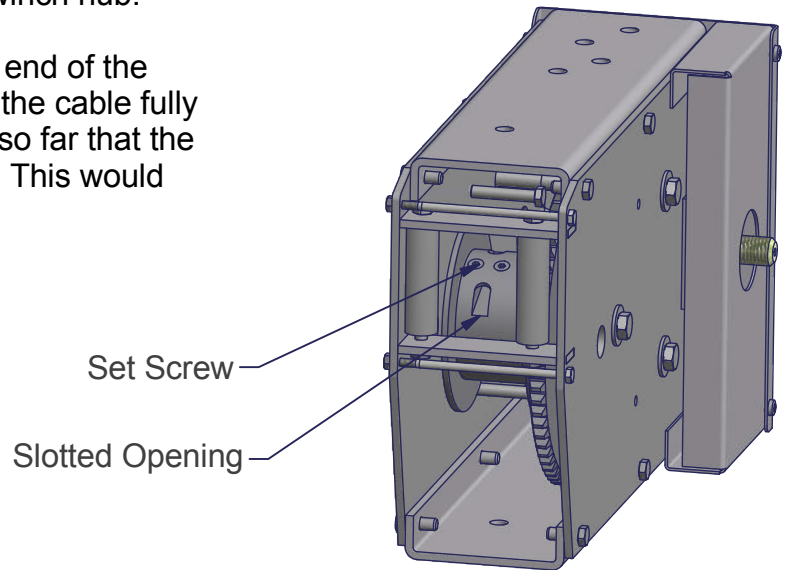
Attach the Winch and Winch Support Plate to the Lift Side Upright. Secure with two Bolts 1/2 x 5 Hex Bolts, four 1/2 Flat Washers and two 1/2 Nuts - as shown in Detail "A".



STEP 3

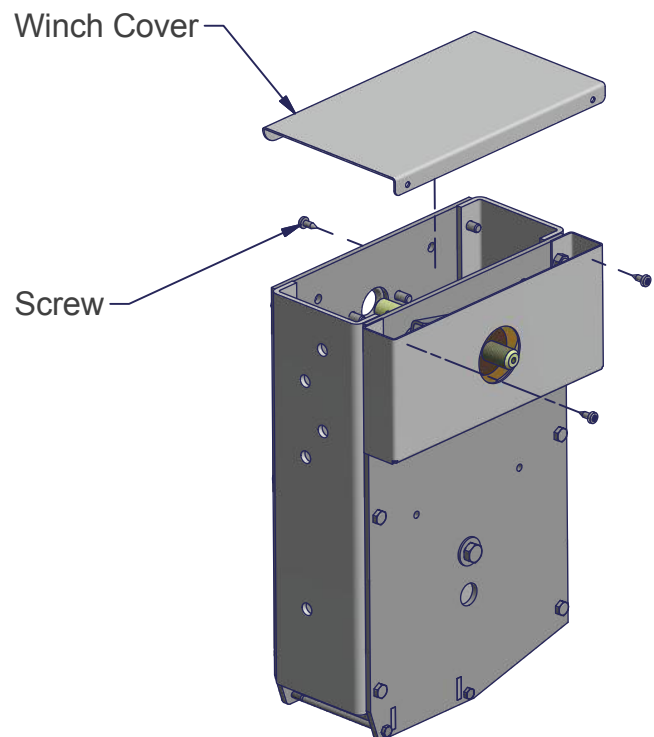
Slide the end of the cable into the slotted opening on the winch hub. Using a 3/16" Allen Wrench, tighten the winch hub set screw to secure the cable to the winch hub.

Note: The cable must enter at the slotted end of the opening through the hub as shown. Slide the cable fully into the hub opening. However do not go so far that the cable sticks out the other side of the hole. This would interfere with proper cable wrapping.



STEP 4

Set cover on winch and secure with the three screws that were removed in Step 1 - as shown.



STEP 5

Thread Wheel clockwise on to shaft of Winch. You must thread wheel all the way on which shaft. The wheel hub must be fully against brake pad when turning wheel up!

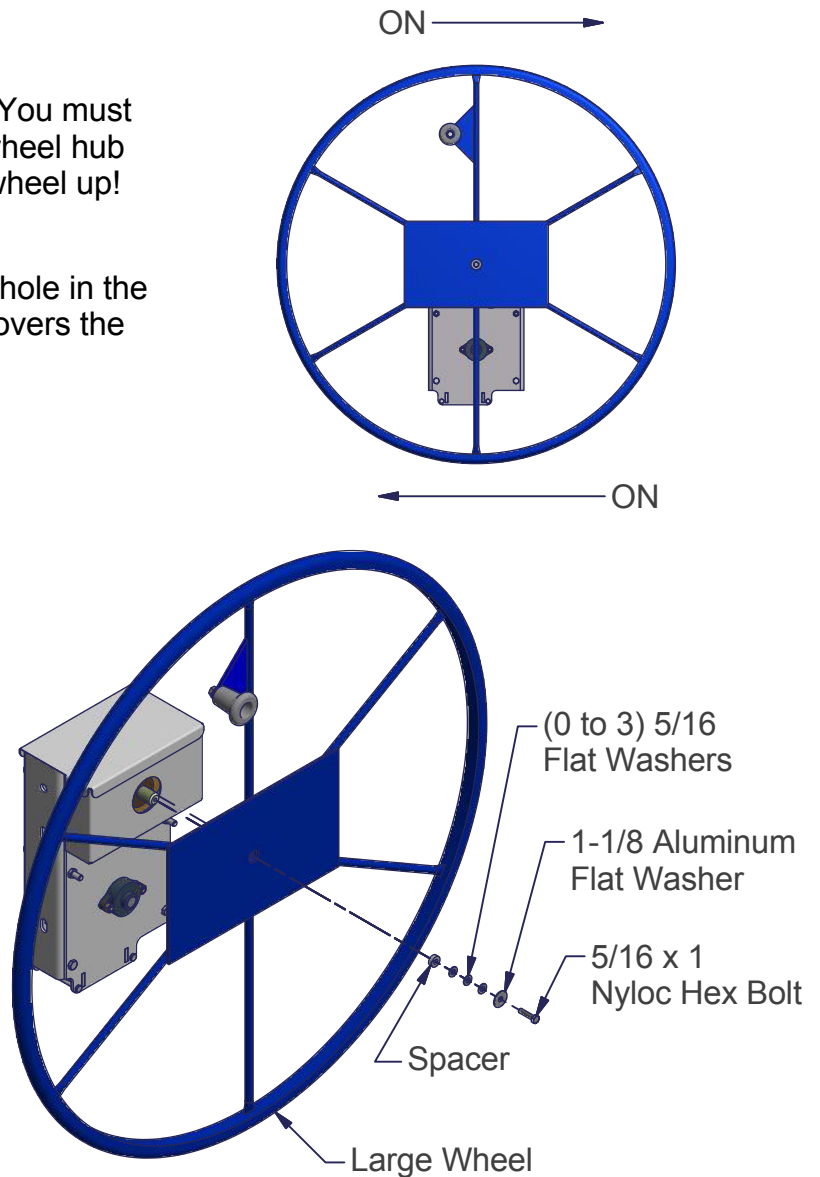
STEP 6

Using a sharp knife or razor blade, cut a small hole in the middle of the wheel, where the wheel sticker covers the attaching bolt hole.

STEP 7

Prior to securing wheel in place using the 5/16 x 1 Nyloc Bolt, stack the spacer and three 5/16 Flat Washers. Then place the stack in the bolt hole in the middle of the wheel. The stack should just barely protrude out of the center bolt hole. Remove one 5/16 Flat Washer at a time until the stack just barely protrudes out of the center hole. Once the correct number of Washers has been determined, secure the wheel in place using the 1-1/8 Aluminum Flat Washer and the 5/16 x 1 Nyloc Bolt as shown.

Note: You should be able to slide a piece of paper in the gap between sticker in the center of the wheel and the washer. The wheel should turn 1/8 to 1/4 turn prior to engaging the 1-1/8 Aluminum Flat Washer.



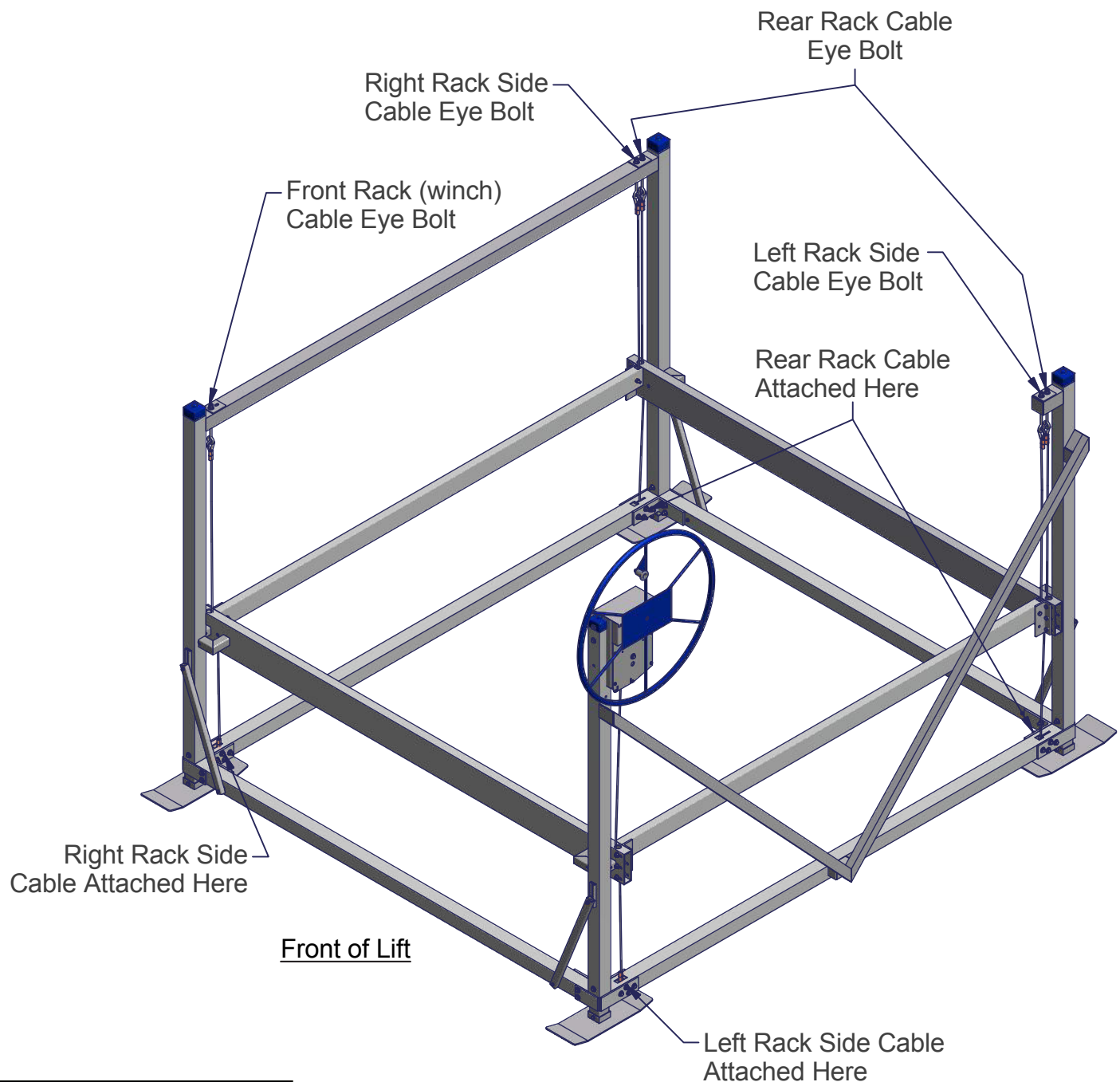
STEP 8

Thread excess cable onto winch hub by turning wheel clockwise. Be sure cable wraps tight and uniformly on hub with each strand lying snugly next to the adjacent strand. Keep tension on the cable by holding it tight when turning the wheel to develop a proper wrap. Do not allow cable to wind up loosely on hub.



To avoid personal injury use a leather glove or other hand protection to avoid cuts when applying cable pressure. Cable wrapping incorrectly will result in rapid cable wear.

Proper Cable Locations



WARNING

To avoid personal injury be sure washer is in place and that Nyloc Nut is tightened so at least 1/4" is exposed. Failure to attach cables, Eye Bolts, Washers and Nyloc Nuts correctly could result in a severe crushing, cutting or pinching injury. Severe damage to lift or boat could also occur.

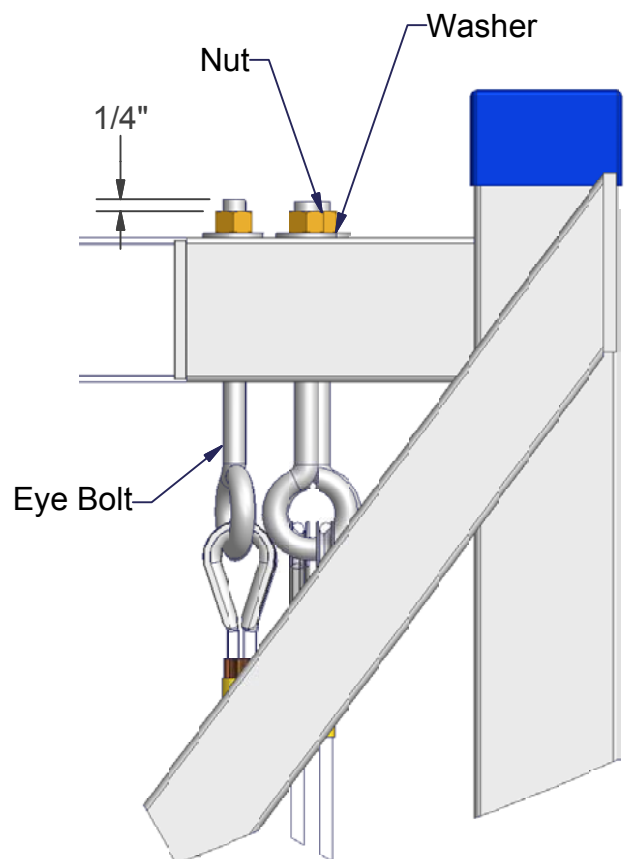
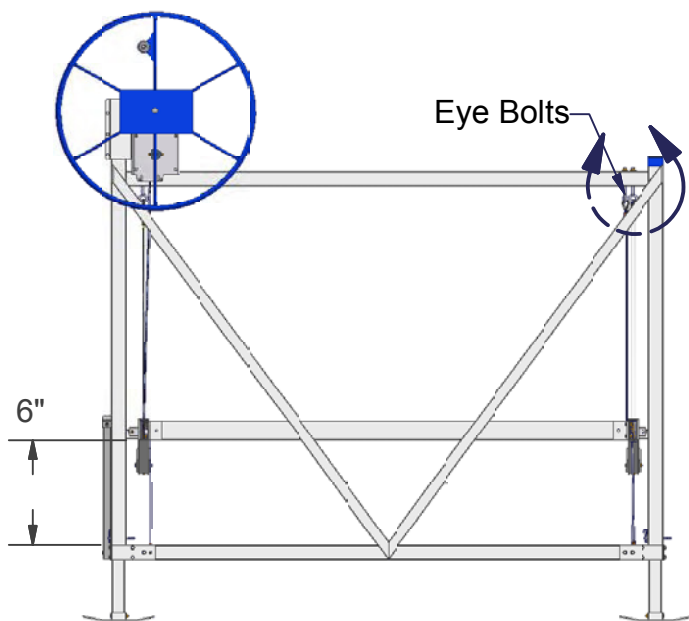
Proper Cable Adjustment

a) There are four cables with Eye Bolts and nuts that must be adjusted to properly level cables. These Eye Bolts are all located near the rear uprights as shown.

b) Turn wheel so front rack beam raises about 6" above the bottom of frame. Adjust cables so all corners of rack are the same distance from frame.

Note: Adjust the cable length by turning the nut on top of the Eye Bolt. Hold the Eye Bolt stationary while adjusting the top nut. Using the frame below the rack as your reference point, measure the distance from frame to rack in each corner. These distances should all be within a 1/4 inch.

Note: Be sure washer is in place and that Nyloc Nut is tightened so at least 1/4" of Eye Bolt thread is exposed. 3/4" is a good starting point for leveling the Rack.



DETAIL A

INSTALLATION INSTRUCTIONS

Warning: Do not under any circumstances, endanger yourself or risk damage to your lift or boat when installing.

- Situations will widely vary between installation sites. ShoreMaster recommends that your dealer or other trained boat lift installer train you and perform the initial installation.
- Wear protective gloves, clothing and eyewear when assembling and installing the lift.
- Do not assemble, install or use this product if items are missing or damaged.

The following are guidelines or suggestions for installation:

STEP 1

Measure the water depth of the position you want to locate the lift. Measurements should be taken at both the projected position of the end nearest shore and the end furthest from shore.

STEP 2

Before installing, adjust lift legs so the boat can float into position before raising, while still allowing a high enough position so the boat can be fully raised up and out of the water.

STEP 3

Carry, lift or slide the lift into position alongside the dock.

STEP 4

Ensure that your lift is level. Measure the distance from the top of the cross beam to the water surface. The distance at each of the four corners of the lift should be within two inches of each other. If they are not, adjust the legs accordingly.

Note: If the lift legs will extend 3 feet or more, ShoreMaster recommends deep water braces to stabilize and strengthen the lift. Ask your dealer for more information.



To avoid personal injury the lift must be resting on the water bottom in a level, secure and stable position for safe operation. An unstable lift installation could result in tipping of the lift during operation, causing damage to watercraft and a crushing or pinching injury to the operator or bystanders.

STEP 5

Position the Bunk Bracket to fit watercraft so that it does not come in contact with the frame of the lift. After loading and operation the lift, proceed to the operating instructions, remove the boat and recheck that the lift remains level.

OPERATING INSTRUCTIONS

WARNING

When first using the boat lift after installation, the weight of the boat may cause the lift to settle and become unbalanced. To avoid personal injury make sure people are not in the immediate vicinity of the lift until you are certain the lift has stabilized.

Now that you have installed and leveled the lift, you are ready to raise your boat for the first time. Prior to use, see to it that anyone who may use the lift looks upon the unit not as a toy but a piece of heavy equipment that deserves your respect and good judgment.

- Before allowing anyone to operate the lift, be sure they fully understand the proper operating procedure.
- Do not exceed maximum capacity of the lift; overloading may cause mechanical failure and serious personal injury.
- Do not allow anyone who is in the water within six feet of the lift.
- Do not allow anyone on, in or under the lift while operating.

When operating the lift, the following procedures should be adhered to:

STEP 1

Be sure the lift rack and cradles or bunks are positioned below the water surface so they will not interfere with the boat floating into position.

STEP 2

Properly balance and center the boat on the lift prior to raising. The boat should be positioned with the center of gravity near the middle of the lift. For most rear engine mounted boats, this requires you to position the boat somewhat forward in the lift.

STEP 3

Turn wheel in direction of arrow (clockwise) to raise lift. A clicking sound is heard when properly raising lift. Turning wheel and wrapping cable in wrong direction may cause fast spin down of wheel.

WARNING

To avoid injury stay clear of lifts (facing wheel) while operating. Do not allow anyone on, in or under lift. A cable or lift part failure can cause a sudden drop of boat, resulting in a crushing or falling injury or death! Do not touch wheel or attempt to stop it if fast spin down of wheel occurs. Placing hands or feet on spinning wheel can cause broken or cut limbs.

STEP 4

Carefully bring the lift up until the bunks or cradles have secured the boat. Then, stop the lift and check to see that the bunks or cradles have automatically positioned themselves to the shape of the hull, as they are designed to do. If so, continue bringing the boat out of the water until it is about one foot above the surface. Stop the lift again and check the stability of the lift, particularly to see that it is fairly level and will not topple over. Finally, continue lifting the boat while paying close attention to the positioning of the lift until it is at its desired height.

STEP 5

After loading and operating the lift, remove the boat and recheck that the lift remains level. (See Step 4 of the Installation Instructions.) If the lift is not level, the legs should be adjusted accordingly. Because the lift may settle and become unbalanced, the lift levelness should be rechecked two weeks after installation and periodically as needed.

STEP 6

If lift is without a boat in it for more than one day, raise the rack (pulleys) fully out of the water to help prevent corrosion of these parts. At all times, make sure the boat is stored high enough out of the water to avoid wave action against the hull. A moving boat as a result of wave action will damage the lift and can take the boat off the lift.

NOTICE

1. Do not over raise lift rack. Stop before top of rack hits cable loops attached to Eye Bolts. Over raising could cause damage to winch, cables or other parts.
2. Do not over lower rack so slack develops in cable. Doing this could cause cable to jump off winch spool. This may result in sloppy wrapping of cable next time you raise the lift, resulting in premature wear or cable breaking. Turn wheel down one or two turns past point when craft begins to float (This must always be at some point before lift rack is contacting rear bottom beam). Then turn wheel up slightly until clicking sound is heard to secure wheel position and brake on winch.
3. Properly cover your boat, or pull your boat's plug when the boat is in a raised position. Rain water accumulating in your bilge can quickly increase your gross weight over the capacity of the lift.
4. Do not leave lift, or boat on lift, in water if ice formation is possible. Ice can severely damage your boatlift.

SAFETY MAINTENANCE

Monthly Checks

Check cables for frays, corrosion or breaks at least once a month. A cable breaking while boat is in lift could damage boat or lift. Severe bodily injury could also occur.

Spring and Falls Checks

1. Inspect nuts and bolts for damage, wear or loose connections. Tighten or replace parts as needed.
2. Inspect lift frame, pulleys, winch and pivot points for unusual wear, damage or bent parts. Replace or repair as needed.
3. Check that the rack is level with the bottom frame of your lift. Cable stretching or settling of lift could require you to adjust nuts on Eye-Bolts.
4. Lubricate winch and wheel threads. Do not get lubricant on brakepads! Brake will fail and wheel will spin down if brake pads are lubricated.
5. Check and lubricate pulleys to ensure that they are turning freely.
6. Check Eye-Bolts to make sure they are not working themselves loose.