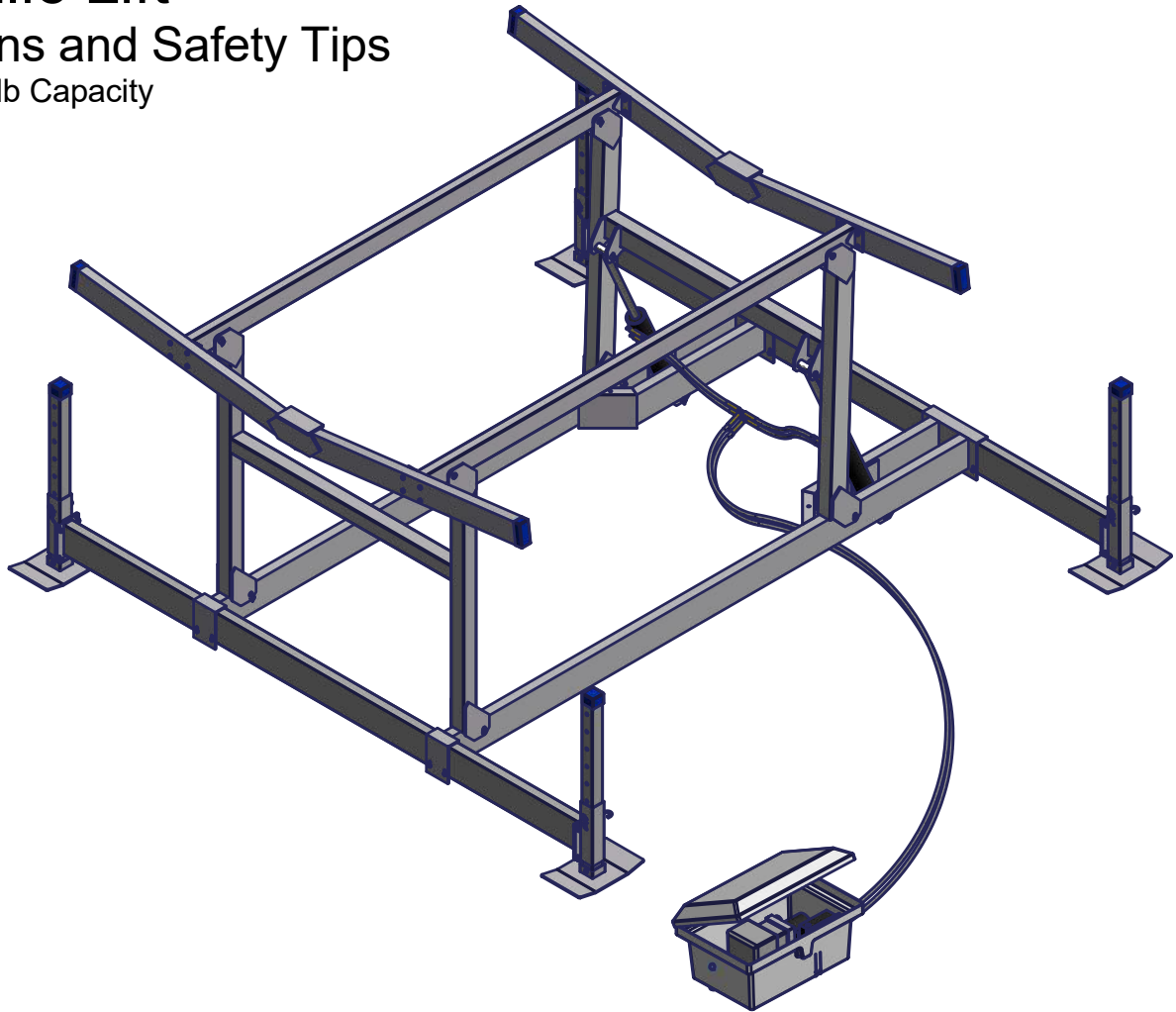


# Hydraulic Lift

## Instructions and Safety Tips

4000lb - 6000lb Capacity

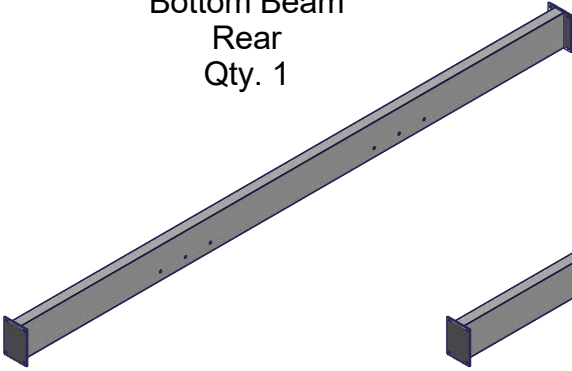


### **⚠ WARNING - PUT SAFETY FIRST**

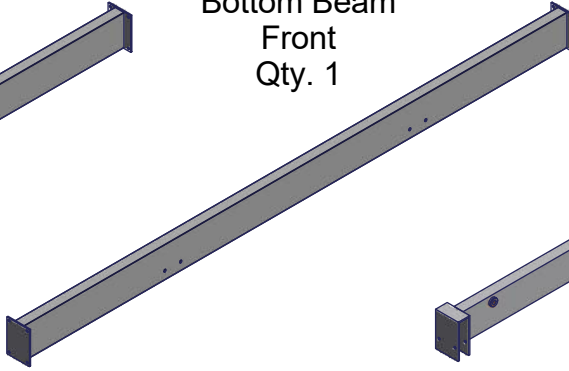
1. NOT COMPLYING WITH THE PROCEDURES AND PRECAUTIONS OUTLINED IN THIS MANUAL MAY RESULT IN PERSONAL INJURY OR DEATH AND WILL INVALIDATE THE WARRANTY.
2. Before attempting to install or operate this hoist, study and fully understand the proper operating procedures and safety precautions outlined in this owner's manual.
3. Never exceed the recommended weight capacity of your lift. The lifted weight will include hull, engine, fuel, battery, added accessories or gear, and rain water or any other materials inside of the boat. Weigh your fully loaded boat at a certified scale to be absolutely sure of the total weight.
4. To avoid injury or death do not allow anyone on, in, or under the lift while operating.
5. If you have any questions about assembly, installation, operation or suitability of this product, contact an authorized dealer or ShoreMaster directly.

## Parts List

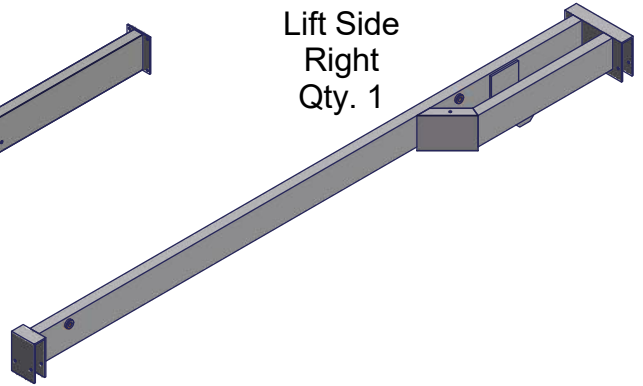
Bottom Beam  
Rear  
Qty. 1



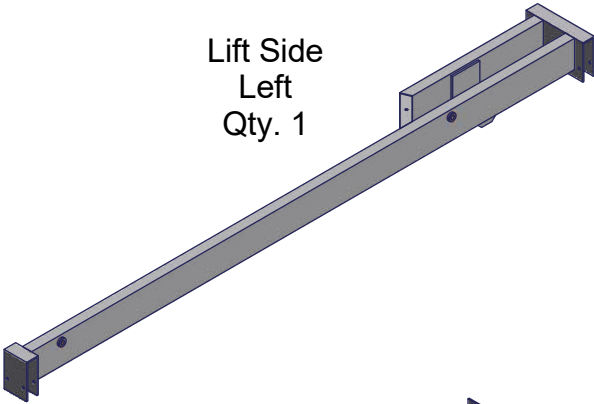
Bottom Beam  
Front  
Qty. 1



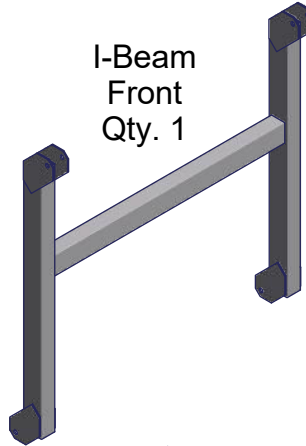
Lift Side  
Right  
Qty. 1



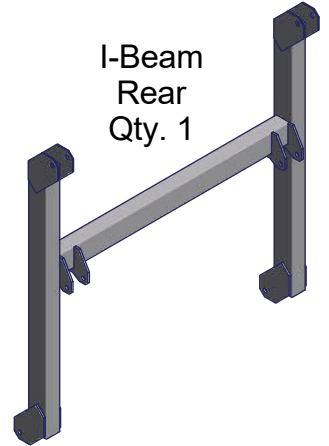
Lift Side  
Left  
Qty. 1



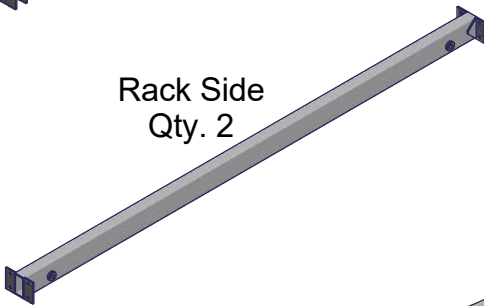
I-Beam  
Front  
Qty. 1



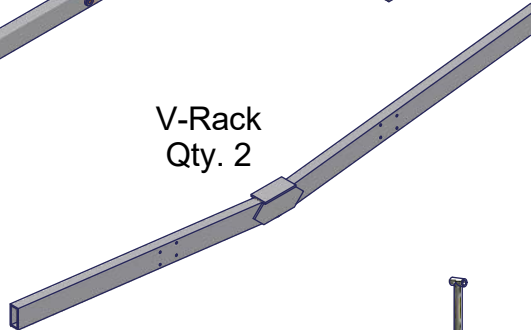
I-Beam  
Rear  
Qty. 1



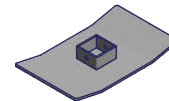
Rack Side  
Qty. 2



V-Rack  
Qty. 2



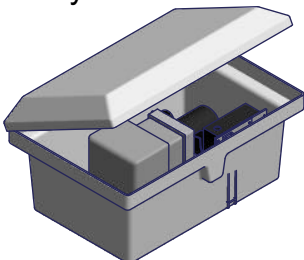
Foot Pad  
Qty. 4



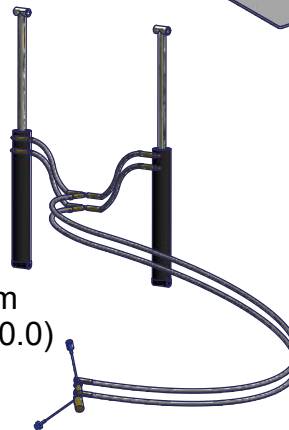
Leg Post  
Qty. 4



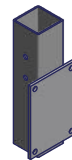
Hydraulic  
Box With Pump  
Qty. 1



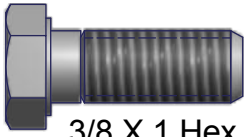
Hydraulic Ram  
Kit (2 - 2.75 x 20.0)  
Qty. 1



Leg Pocket  
Qty. 4



## Fasteners and Hardware



3/8 X 1 Hex Bolt  
Qty. 16



3/8 X 2-3/4 Hex Bolt  
Qty. 16



3/8 X 3 Hex Bolt  
Qty. 10



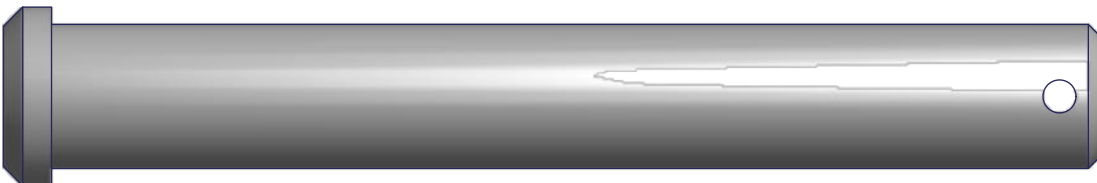
3/8 X 3-1/2 Hex Bolt  
Qty. 4



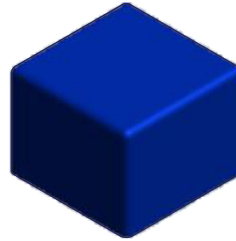
4.0 Pin  
Qty. 6



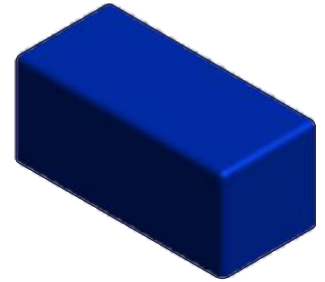
4-1/2 Pin  
Qty. 4



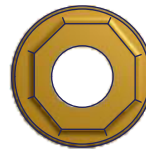
5-1/2 Pin  
Qty. 2



2-1/2 x 2-1/2 Blue Cap  
Qty. 4



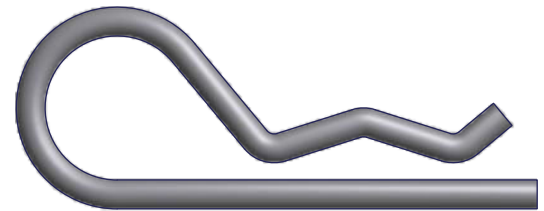
2-1/2 x 2-5/8 Blue Cap  
Qty. 4



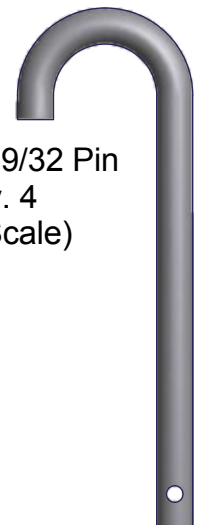
3/8 Flanged Brass Nut  
Qty. 46



5/32 x 1-1/2 Cotter  
Pin Qty. 12

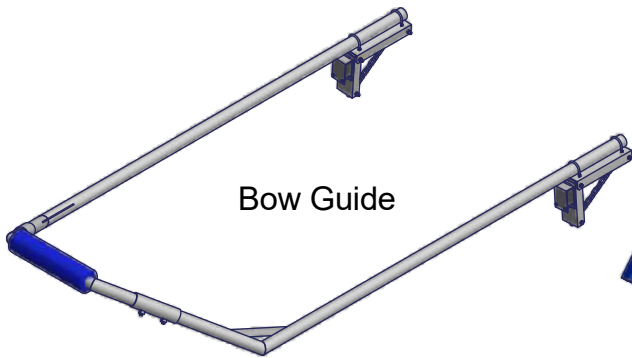


Hair Pin Keeper  
Qty. 4

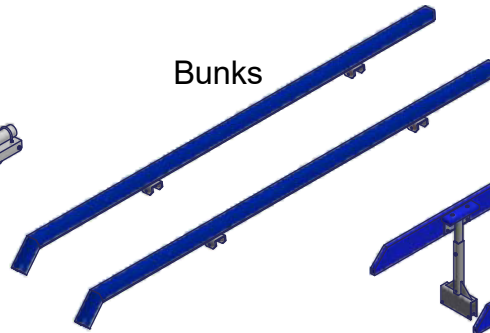


3/8 X 3-29/32 Pin  
Qty. 4  
(1/2 Scale)

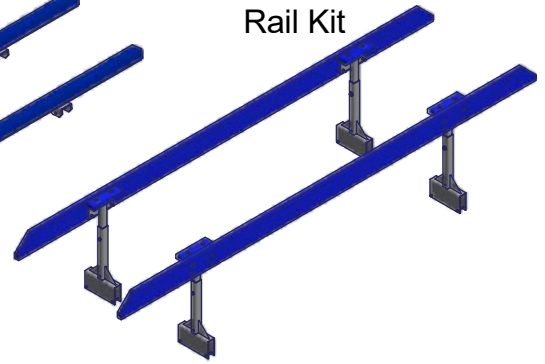
## Available Hydraulic Accessories



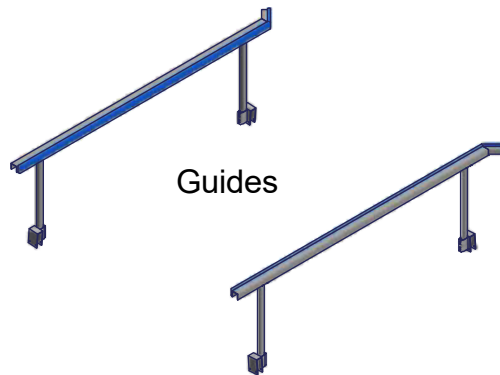
Bow Guide



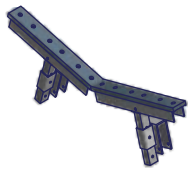
Bunks



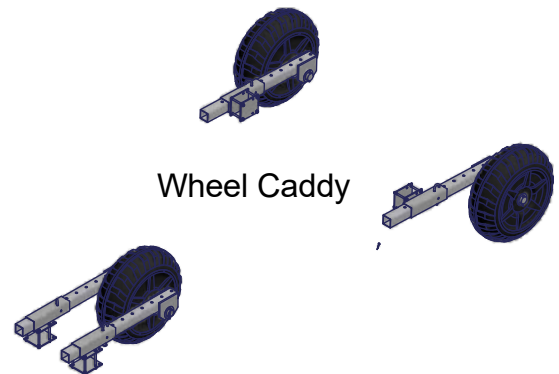
Rail Kit



Guides

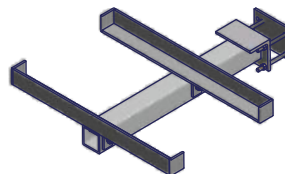


Adjustable Cradles

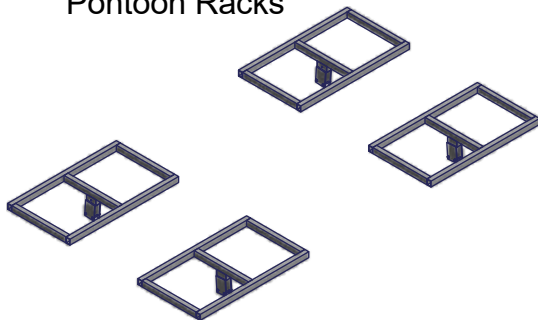


Wheel Caddy

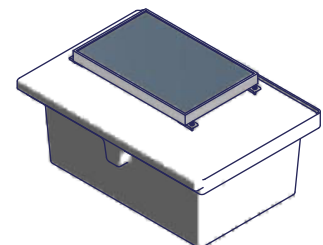
Hydraulic Box Holder



Pontoon Racks



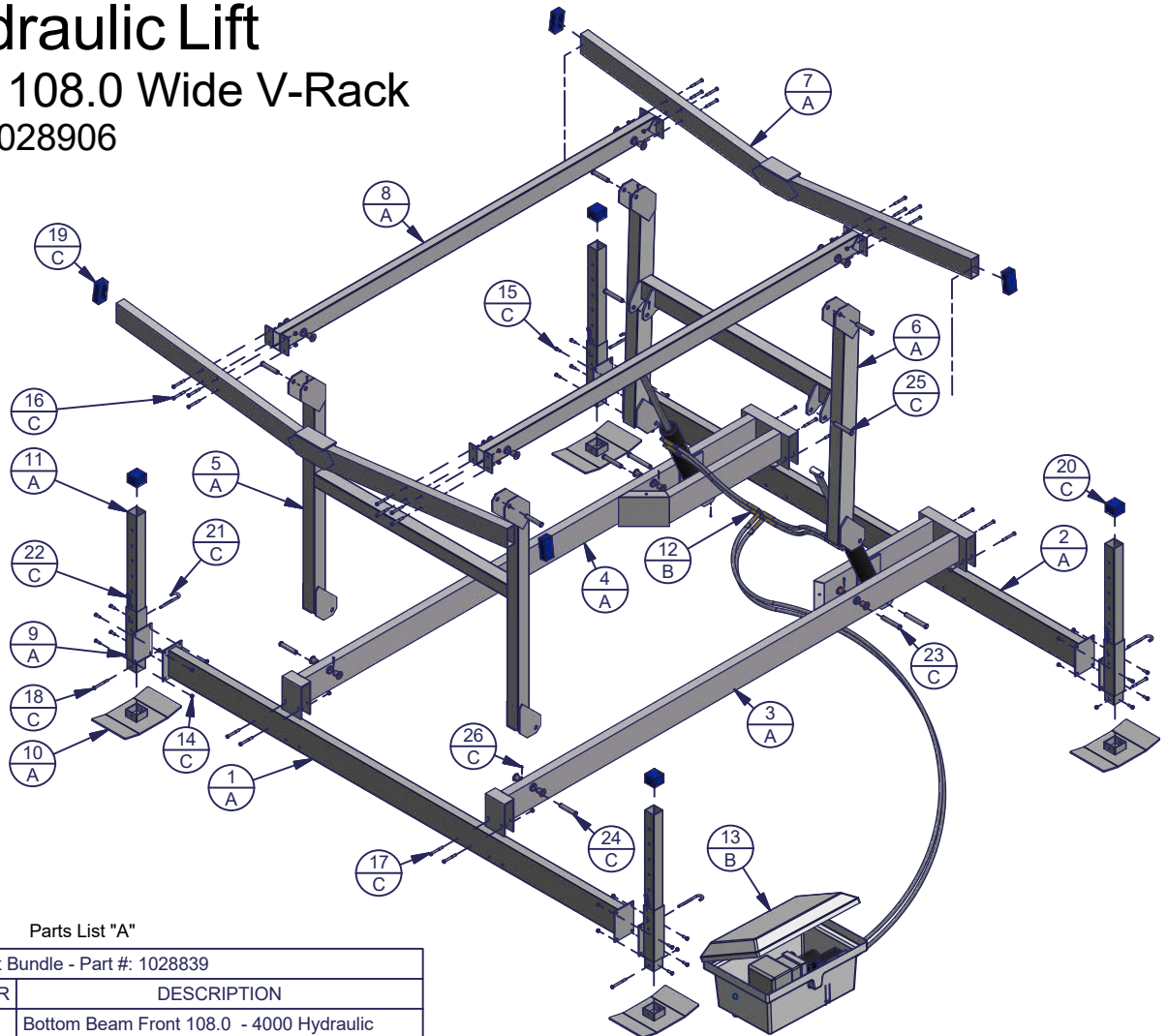
Solar Panel Kit



## 4948 Hydraulic Lift

48.0 High X 108.0 Wide V-Rack

Part Number: 1028906



Parts List "A"

Lift Bundle - Part #: 1028839			
ITEM	QTY	PART NUMBER	DESCRIPTION
1	1	1007360	Bottom Beam Front 108.0 - 4000 Hydraulic
2	1	1007361	Bottom Beam Rear 108.0 - 4000 Hydraulic
3	1	1003622	Lift Side Left - 4000 Hydraulic
4	1	1003621	Lift Side Right - 4000 Hydraulic
5	1	1003668	I-Beam 48" Front - 4000 Hydraulic
6	1	1003667	I-Beam 48" Rear - 4000 Hydraulic
7	2	1028323	Wdmt V-Rack 108.0 - 4000 Hydraulic
8	2	1007365	Rack Side Hydraulic 4000 Lbs
9	4	1007320	Leg Pocket Hydraulic 4000 Lbs
10	4	1007404	Foot Pad C-3
11	4	1003944	Leg Post 36.0 - C-3

Parts List "B"

Hydraulic Components Part #'s			
ITEM	QTY	PART NUMBER	DESCRIPTION
12	1	1026473	Hydraulic 2-Ram Kit 2.5 X 20
13	1	1027420	Hydraulic Box W/ Reversible Pump And Remote
-	1	1001028	Fiberglass Box- Hydraulic Lift
-	1	1007885	Wdmt Cradle for Reversible Pump
-	1	1025995	Hydraulic Pump Assembly 1800 PSI
-	1	1026114	IFP Reversible Remote Wiring w/Box

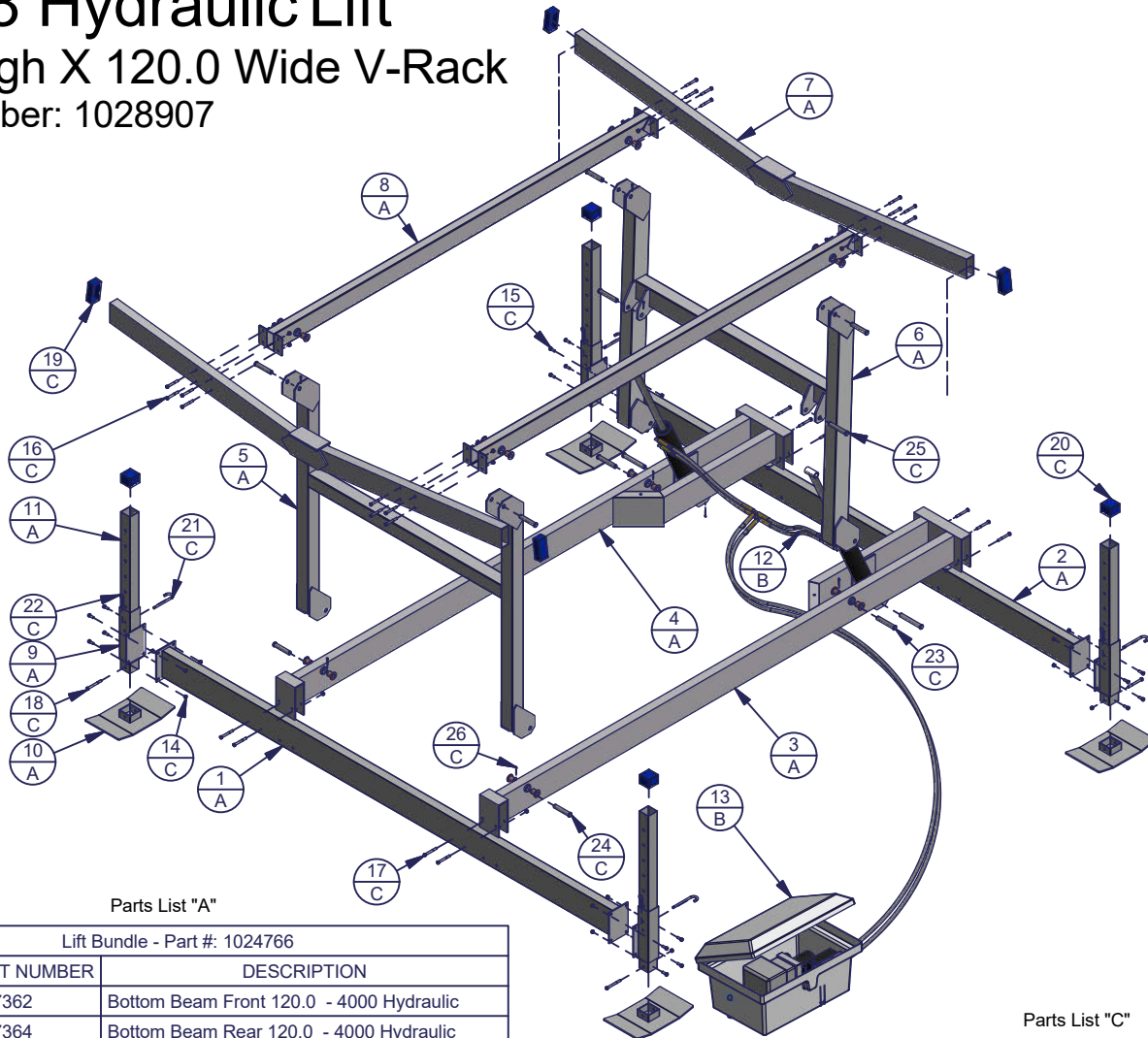
Parts List "C"

Hardware Box - Part #: 1004532			
ITEM	QTY	PART NUMBER	DESCRIPTION
-	1	1002503	Bolt Bag Lift Hydraulic 4000
14	46	1001802	Nut Hex Flange 3/8-16 Brass
15	16	1002419	Bolt Hex 3/8-16 x 1.0 SS 304
16	16	1002431	Bolt Hex 3/8-16 x 2.75 SS 304
17	10	1002432	Bolt Hex 3/8-16 x 3.0 SS 304
18	4	1002434	Bolt Hex 3/8-16 x 3.5 SS 304
19	4	1001822	Cap Blue #1 - 2.0x4.5x1.5
20	4	1001819	Cap Blue #18 - 2.5x2.5x2.0
-	1	1007505	Bolt Bag Lift Hydraulic
21	4	1002600	Pin-J 3/8 X 3-29/32 SS 304
22	4	1002278	MH Hair Pin Keeper #10 SS
23	2	1002647	Pin .75 x 5.5 SS 17-4 H1150
24	4	1002645	Pin .75 x 4.5 SS 17-4 H1150
25	6	1002644	Pin .75 x 4.0 SS 17-4 H1150
26	12	1023968	Pin Cotter 5/32 x 1.5 SS
-	2	1024433	Hose Clamp 5/8" OD
-	2	1014201	#12 x 3/4 Self Drilling Screws



## 41048 Hydraulic Lift

48.0 High X 120.0 Wide V-Rack  
Part Number: 1028907



Parts List "A"

Lift Bundle - Part #: 1024766			
ITEM	QTY	PART NUMBER	DESCRIPTION
1	1	1007362	Bottom Beam Front 120.0 - 4000 Hydraulic
2	1	1007364	Bottom Beam Rear 120.0 - 4000 Hydraulic
3	1	1003622	Lift Side Left - 4000 Hydraulic
4	1	1003621	Lift Side Right - 4000 Hydraulic
5	1	1003668	I-Beam 48" Front - 4000 Hydraulic
6	1	1003667	I-Beam 48" Rear - 4000 Hydraulic
7	2	1026382	V Rack Hydraulic 120.0 - 4000 Hydraulic
8	2	1007365	Rack Beam Side Hydraulic 4000 Lbs
9	4	1007320	Leg Pocket Hydraulic 4/6000 Lbs
10	4	1007404	Foot Pad C-3
11	4	1003944	Leg Post 36.0 - C-3

Parts List "B"

Hydraulic Components Part #'s			
ITEM	QTY	PART NUMBER	DESCRIPTION
12	1	1026473	Hydraulic 2-Ram Kit 2.5 X 20
13	1	1027420	Hydraulic Box W/ Reversible Pump And Remote
-	1	1001028	Fiberglass Box- Hydraulic Lift
-	1	1007885	Wdmt Cradle for Reversible Hyd Pump
-	1	1025995	Hydraulic Pump Assy - 1800 PSI
-	1	1026114	IFP Remote Wiring Harness W/ Box

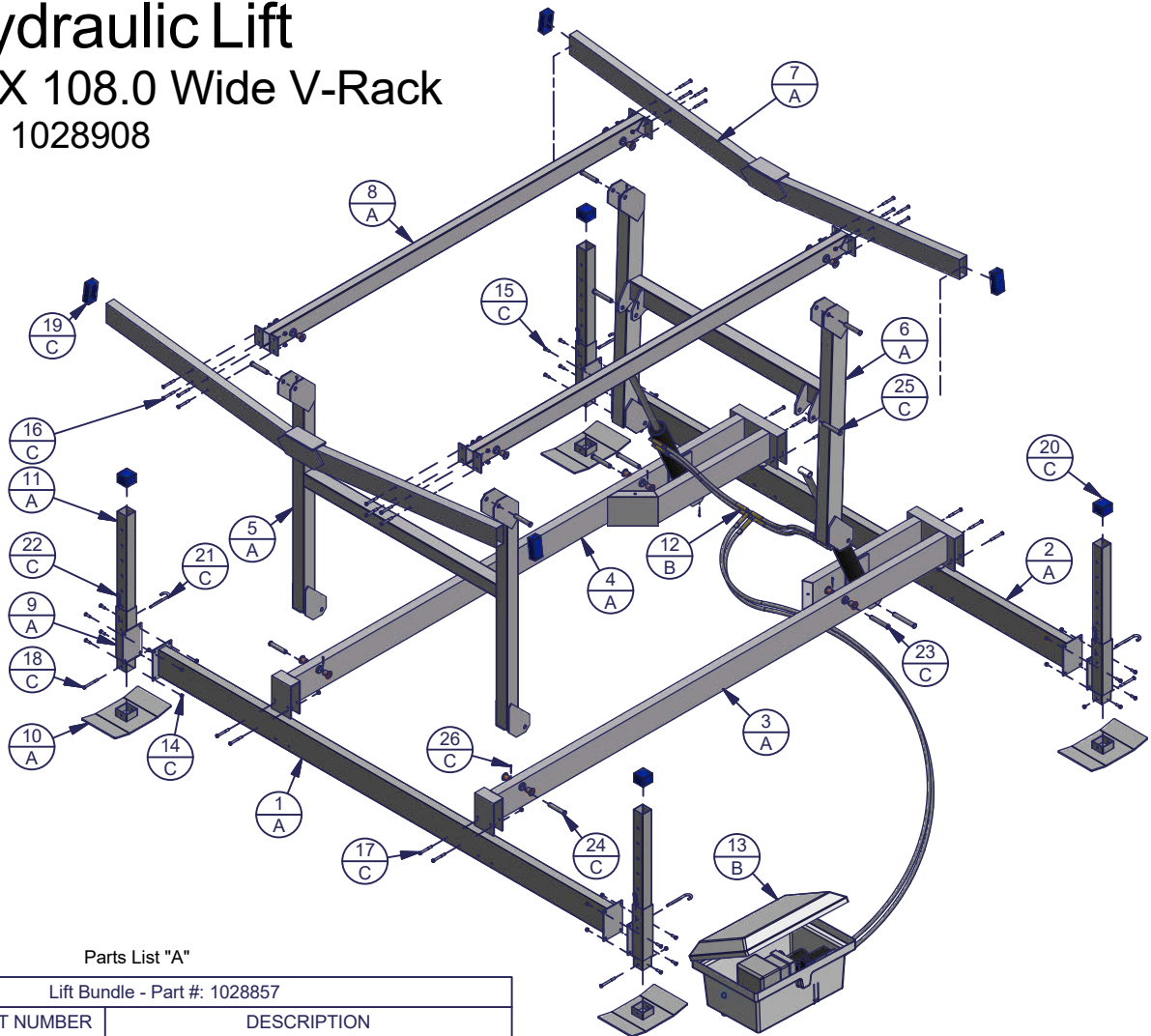
Parts List "C"

Hardware Box - Part #: 1004532			
ITEM	QTY	PART NUMBER	DESCRIPTION
-	1	1002503	Bolt Bag Lift Hydraulic 4000/6000
14	46	1001802	Nut Hex Flange 3/8-16 Brass
15	16	1002419	Bolt Hex 3/8-16 x 1.0 SS 304
16	16	1002431	Bolt Hex 3/8-16 x 2.75 SS 304
17	10	1002432	Bolt Hex 3/8-16 x 3.0 SS 304
18	4	1002434	Bolt Hex 3/8-16 x 3.5 SS 304
19	4	1001822	Cap Blue #1 - 2.0x4.5x1.5
20	4	1001819	Cap Blue #18 - 2.5x2.5x2.0
-	1	1007505	Bolt Bag Lift Hydraulic 4/6000
21	4	1002600	Pin-J 3/8 X 3-29/32 SS 304
22	4	1002278	MH Hair Pin Keeper #10 SS
23	2	1002647	Pin .75 x 5.5 SS 17-4 H1150
24	4	1002645	Pin .75 x 4.5 SS 17-4 H1150
25	6	1002644	Pin .75 x 4.0 SS 17-4 H1150
26	12	1023968	Pin Cotter 5/32 x 1.5 SS
-	2	1024433	Hose Clamp 5/8" OD
-	2	1014201	#12 x 3/4 Self Drilling Screw

## 4960 Hydraulic Lift

### 60.0 High X 108.0 Wide V-Rack

Part Number: 1028908



Parts List "A"

Lift Bundle - Part #: 1028857

ITEM	QTY	PART NUMBER	DESCRIPTION
1	1	1007360	Bottom Beam Front 108.0 - 4000 Hydraulic
2	1	1007361	Bottom Beam Rear 108.0 - 4000 Hydraulic
3	1	1003622	Lift Side Left - 4000 Hydraulic
4	1	1003621	Lift Side Right - 4000 Hydraulic
5	1	1003620	I-Beam 60" Front - 4000 Hydraulic
6	1	1003619	I-Beam 60" Rear - 4000 Hydraulic
7	2	1028323	V-Rack Hydraulic 108.0 - 4000 Hydraulic
8	2	1007365	Rack Beam Side Hydraulic 4000 Lbs
9	4	1007320	Leg Pocket Hydraulic 4000 Lbs
10	4	1007404	Foot Pad C-3
11	4	1003944	Leg Post 36.0 - C-3

Parts List "B"

Hydraulic Components Part #'s

ITEM	QTY	PART NUMBER	DESCRIPTION
12	1	1026473	Hydraulic 2-Ram Kit 2.5 X 20
13	1	1027421	Hydraulic Box W/ Reversible Pump And Remote
-	1	1001028	Fiberglass Box- Hydraulic Lift
-	1	1007885	Wdmt Cradle for Reversible Hyd Pump
-	1	1025995	Hydraulic Pump Assembly - 2400 PSI
-	1	1026114	IFP Remote Wiring Harness W/ Box

Parts List "C"

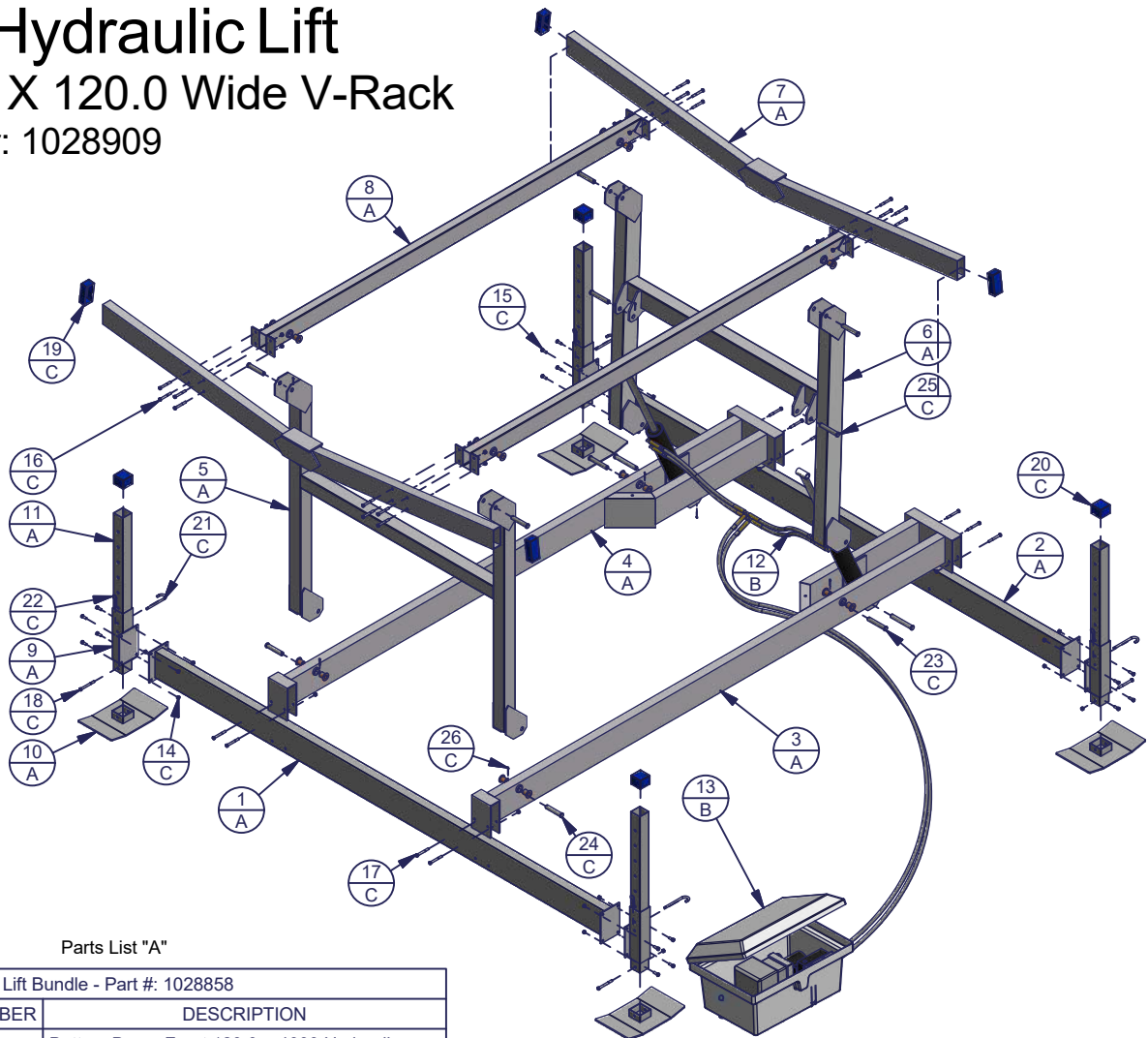
Hardware Box - Part #: 1004532

ITEM	QTY	PART NUMBER	DESCRIPTION
-	1	1002503	Bolt Bag Lift Hydraulic 4000/6000
14	46	1001802	Nut Hex Flange 3/8-16 Brass
15	16	1002419	Bolt Hex 3/8-16 x 1.0 SS 304
16	16	1002431	Bolt Hex 3/8-16 x 2.75 SS 304
17	10	1002432	Bolt Hex 3/8-16 x 3.0 SS 304
18	4	1002434	Bolt Hex 3/8-16 x 3.5 SS 304
19	4	1001822	Cap Blue #1 - 2.0x4.5x1.5
20	4	1001819	Cap Blue #18 - 2.5x2.5x2.0
-	1	1007505	Bolt Bag Lift Hydraulic 61048
21	4	1002600	Pin-J 3/8 X 3-29/32 SS 304
22	4	1002278	MH Hair Pin Keeper #10 SS
23	2	1002647	Pin .75 x 5.5 SS 17-4 H1150
24	4	1002645	Pin .75 x 4.5 SS 17-4 H1150
25	6	1002644	Pin .75 x 4.0 SS 17-4 H1150
26	12	1023968	Pin Cotter 5/32 x 1.5 SS
-	2	1024433	Hose Clamp 5/8" OD
-	2	1014201	#12 x 3/4 Self Drilling Screw

## 41060 Hydraulic Lift

### 60.0 High X 120.0 Wide V-Rack

Part Number: 1028909



Parts List "A"

Lift Bundle - Part #: 1028858			
ITEM	QTY	PART NUMBER	DESCRIPTION
1	1	1007362	Bottom Beam Front 120.0 - 4000 Hydraulic
2	1	1007364	Bottom Beam Rear 120.0 - 4000 Hydraulic
3	1	1003622	Lift Side Left - 4000 Hydraulic
4	1	1003621	Lift Side Right - 4000 Hydraulic
5	1	1003620	I-Beam 60" Front - 4000 Hydraulic
6	1	1003619	I-Beam 60" Rear - 4000 Hydraulic
7	2	1026382	V-Rack Hydraulic 120.0 - 4000 Hydraulic
8	2	1007365	Rack Beam Side Hydraulic 4000 Lbs
9	4	1007320	Leg Pocket Hydraulic 4000 Lbs
10	4	1007404	Foot Pad C-3
11	4	1003944	Leg Post 36.0 - C-3

Parts List "B"

Hydraulic Components Part #s			
ITEM	QTY	PART NUMBER	DESCRIPTION
12	1	1026473	Hydraulic 2-Ram Kit 2.5 X 20
13	1	1027421	Hydraulic Box W/ Reversible Pump And Remote
-	1	1001028	Fiberglass Box- Hydraulic Lift
-	1	1007885	Wdmt Cradle for Reversible Hyd Pump
-	1	1025995	Hydraulic Pump Assembly - 2400 PSI
-	1	1026114	IFP Remote Wiring Harness W/ Box

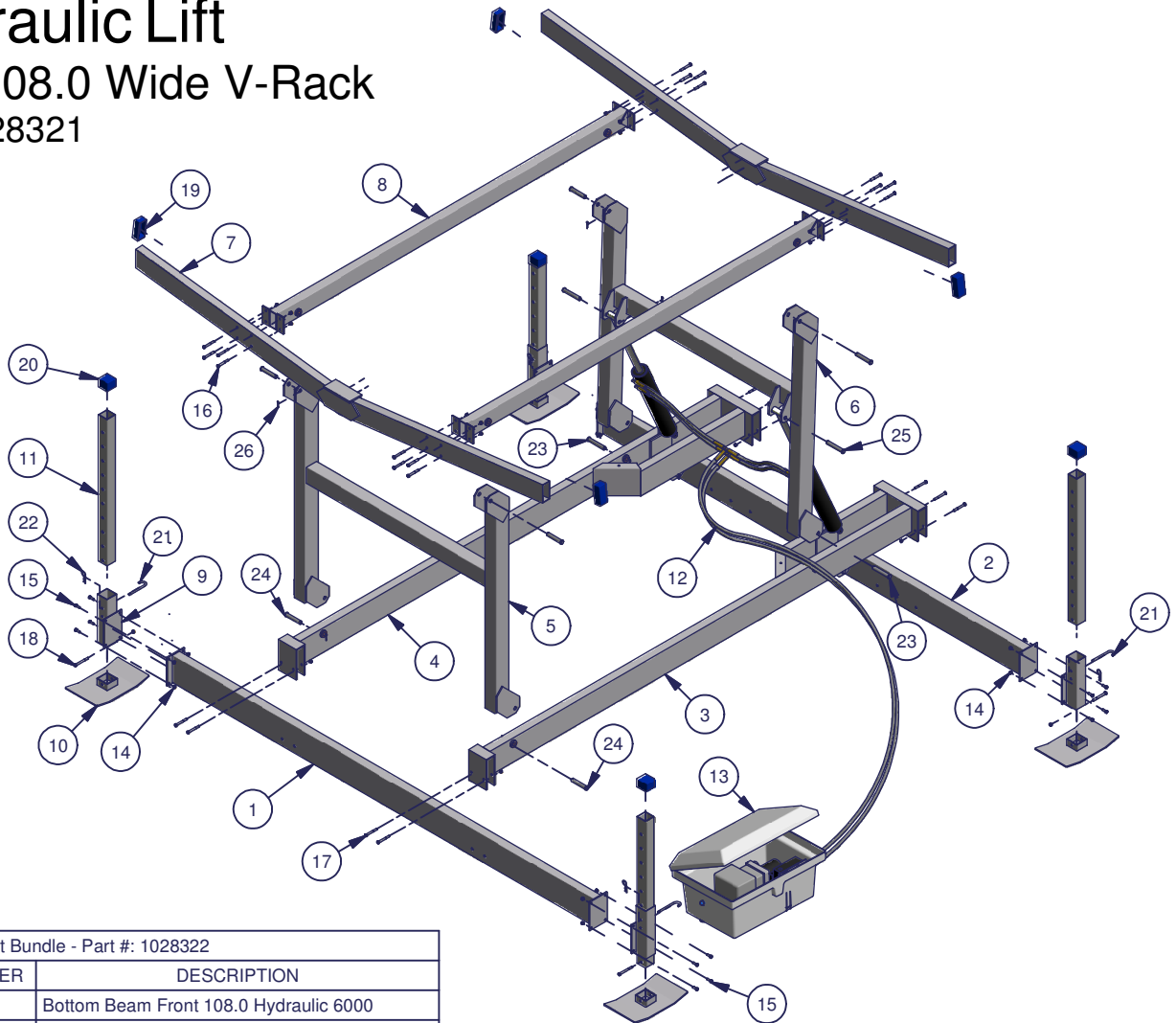
Parts List "C"

Hardware Box - Part #: 1004532			
ITEM	QTY	PART NUMBER	DESCRIPTION
-	1	1002503	Bolt Bag Lift Hydraulic 4000/6000
14	46	1001802	Nut Hex Flange 3/8-16 Brass
15	16	1002419	Bolt Hex 3/8-16 x 1.0 SS 304
16	16	1002431	Bolt Hex 3/8-16 x 2.75 SS 304
17	10	1002432	Bolt Hex 3/8-16 x 3.0 SS 304
18	4	1002434	Bolt Hex 3/8-16 x 3.5 SS 304
19	4	1001822	Cap Blue #1 - 2.0x4.5x1.5
20	4	1001819	Cap Blue #18 - 2.5x2.5x2.0
-	1	1007505	Bolt Bag Lift Hydraulic
21	4	1002600	Pin-J 3/8 X 3-29/32 SS 304
22	4	1002278	MH Hair Pin Keeper #10 SS
23	2	1002647	Pin .75 x 5.5 SS 17-4 H1150
24	4	1002645	Pin .75 x 4.5 SS 17-4 H1150
25	6	1002644	Pin .75 x 4.0 SS 17-4 H1150
26	12	1023968	Pin Cotter 5/32 x 1.5 SS
-	2	1024433	Hose Clamp 5/8" OD
-	2	1014201	#12 x 3/4 Self Drilling Screw



## 6948 Hydraulic Lift

48.0 High X 108.0 Wide V-Rack  
Part Number: 1028321



Lift Bundle - Part #: 1028322

ITEM	QTY	PART NUMBER	DESCRIPTION
1	1	1007360	Bottom Beam Front 108.0 Hydraulic 6000
2	1	1007361	Bottom Beam Rear 108.0 Hydraulic 6000
3	1	1003622	Lift Side Left High Lift - 6000 Hydraulic
4	1	1003621	Lift Side Right High Lift - 6000 Hydraulic
5	1	1003668	I-Beam 48.0 Front - 6000 Hydraulic
6	1	1003667	I-Beam 48.0 Rear - 6000 Hydraulic
7	2	1028323	Wdmt V Rack 108.0 - 6000 Hydraulic
8	2	1007365	Rack Beam Side Hydraulic 6000 Lbs
9	4	1007320	Leg Pocket Hydraulic 4/6000 Lbs
10	4	1007404	Foot Pad C-3
11	4	1003944	Leg Post 36.0 - C-3

Hydraulic Components Part #'s

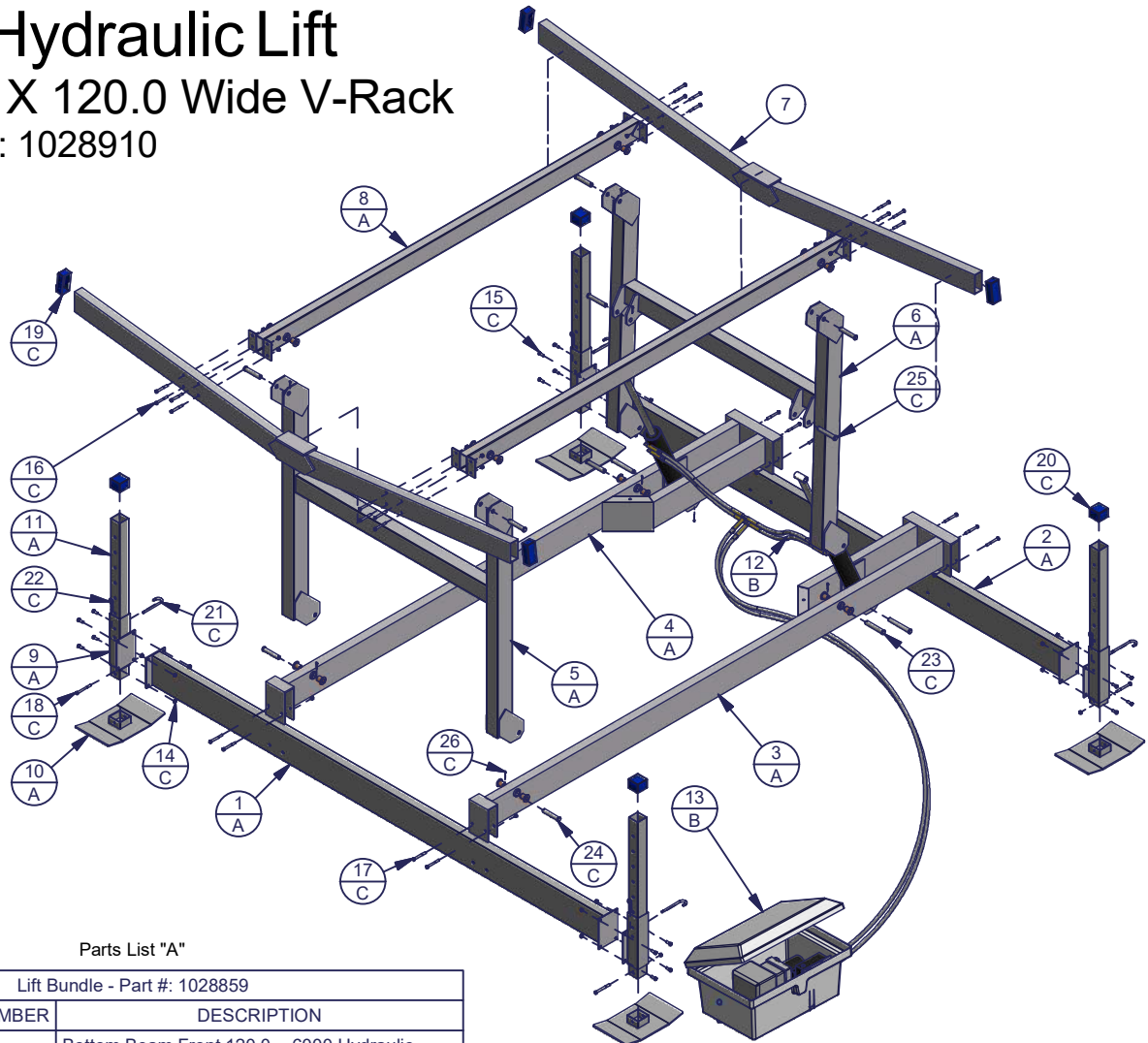
ITEM	QTY	PART NUMBER	DESCRIPTION
12	1	1025996	Hydraulic 2-Ram Kit 2.75 X 20
13	1	1026119	Hydraulic Box W/ Reversible Pump And Remote
-	1	1001028	Fiberglass Box- Hydraulic Lift
-	1	1007885	Wdmt Cradle for Reversible Pump
-	1	1025995	Hydraulic Pump Assembly - 2100 PSI
-	1	1026114	IFP Remote Wiring Harness W/ Box

Hardware Box - Part #: 1004532

ITEM	QTY	PART NUMBER	DESCRIPTION
-	1	1002503	Bolt Bag Lift Hydraulic 4000/6000
14	46	1001802	Nut Hex Flange 3/8-16 Brass
15	16	1002419	Bolt Hex 3/8-16 x 1.0 SS 304
16	16	1002431	Bolt Hex 3/8-16 x 2.75 SS 304
17	10	1002432	Bolt Hex 3/8-16 x 3.0 SS 304
18	4	1002434	Bolt Hex 3/8-16 x 3.5 SS 304
19	4	1001822	Cap Blue #1 - 2.0x4.5x1.5
20	4	1001819	Cap Blue #18 - 2.5x2.5x2.0
-	1	1007505	Bolt Bag Lift Hydraulic 61048
21	4	1002600	Pin-J 3/8 X 3-29/32 SS 304
22	4	1002278	MH Hair Pin Keeper #10 SS
23	2	1002647	Pin .75 x 5.5 SS 17-4 H1150
24	4	1002645	Pin .75 x 4.5 SS 17-4 H1150
25	6	1002644	Pin .75 x 4.0 SS 17-4 H1150
26	12	1023968	Pin Cotter 5/32 x 1.5 SS
-	2	1024433	5/8" OD Hose Clamp
-	2	1014201	#12 x 3/4 Self Drilling Screw

## 61048 Hydraulic Lift

48.0 High X 120.0 Wide V-Rack  
Part Number: 1028910



Parts List "A"

Lift Bundle - Part #: 1028859			
ITEM	QTY	PART NUMBER	DESCRIPTION
1	1	1007362	Bottom Beam Front 120.0 - 6000 Hydraulic
2	1	1007364	Bottom Beam Rear 120.0 - 6000 Hydraulic
3	1	1003622	Lift Side Left - 6000 Hydraulic
4	1	1003621	Lift Side Right - 6000 Hydraulic
5	1	1003668	I-Beam 48" Front - 6000 Hydraulic
6	1	1003667	I-Beam 48" Rear - 6000 Hydraulic
7	2	1026382	V-Rack - 6000 Hydraulic
8	2	1007365	Rack Beam Side Hydraulic 6000 Lbs
9	4	1007320	Leg Pocket Hydraulic 4/6000 Lbs
10	4	1007404	Foot Pad C-3
11	4	1003944	Leg Post 36.0 - C-3

Parts List "B"

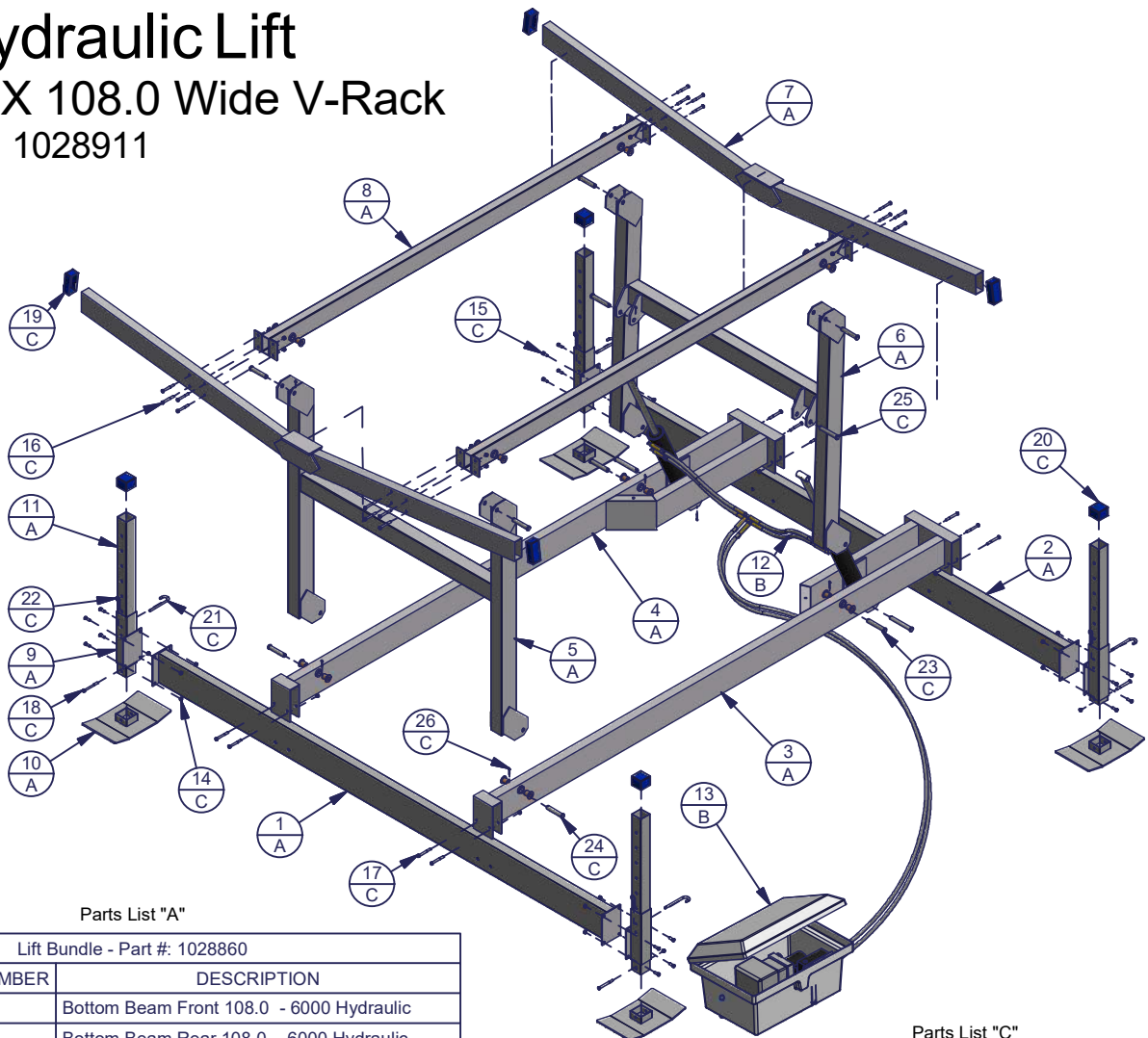
Hydraulic Components Part #'s			
ITEM	QTY	PART NUMBER	DESCRIPTION
12	1	1025996	Hydraulic 2-Ram Kit 2.75 X 20
13	1	1026119	Hydraulic Box W/ Reversible Pump And Remote
-	1	1001028	Fiberglass Box- Hydraulic Lift
-	1	1007885	Wdmt Cradle for Reversible Hyd Pump
-	1	1025995	Hydraulic Pump Assembly - 2100 PSI
-	1	1026114	IFP Remote Wiring Harness W/ Box

Parts List "C"

Hardware Box - Part #: 1004532			
ITEM	QTY	PART NUMBER	DESCRIPTION
-	1	1002503	Bolt Bag Lift Hydraulic 4000/6000
14	46	1001802	Nut Hex 3/8-16 Brass
15	16	1002419	Bolt Hex 3/8-16 x 1.0 SS 304
16	16	1002431	Bolt Hex 3/8-16 x 2.75 SS 304
17	10	1002432	Bolt Hex 3/8-16 x 3.0 SS 304
18	4	1002434	Bolt Hex 3/8-16 x 3.5 SS 304
19	4	1001822	Cap Blue #1 - 2.0x4.5x1.5
20	4	1001819	Cap Blue #18 - 2.5x2.5x2.0
-	1	1007505	Bolt Bag Lift Hydraulic 61048
21	4	1002600	Pin-J 3/8 X 3-29/32 SS 304
22	4	1002278	MH Hair Pin Keeper #10 SS
23	2	1002647	Pin .75 x 5.5 SS 17-4 H1150
24	4	1002645	Pin .75 x 4.5 SS 17-4 H1150
25	6	1002644	Pin .75 x 4.0 SS 17-4 H1150
26	12	1023968	Pin Cotter 5/32 x 1.5 SS
-	2	1024433	5/8" OD Hose Clamp
-	2	1014201	#12 x 3/4 Self Drilling Screw

## 6960 Hydraulic Lift

60.0 High X 108.0 Wide V-Rack  
Part Number: 1028911



Parts List "A"

Lift Bundle - Part #: 1028860			
ITEM	QTY	PART NUMBER	DESCRIPTION
1	1	1007360	Bottom Beam Front 108.0 - 6000 Hydraulic
2	1	1007361	Bottom Beam Rear 108.0 - 6000 Hydraulic
3	1	1003622	Lift Side Left - 6000 Hydraulic
4	1	1003621	Lift Side Right - 6000 Hydraulic
5	1	1003620	I-Beam Front - 6000 Hydraulic
6	1	1003619	I-Beam Rear - 6000 Hydraulic
7	2	1028323	Wdmt V-Rack - 6000 Hydraulic
8	2	1007365	Rack Beam Side Hydraulic 6000 Lbs
9	4	1007320	Leg Pocket Hydraulic 4/6000 Lbs
10	4	1007404	Foot Pad C-3
11	4	1003944	Leg Post 36.0 - C-3

Parts List "B"

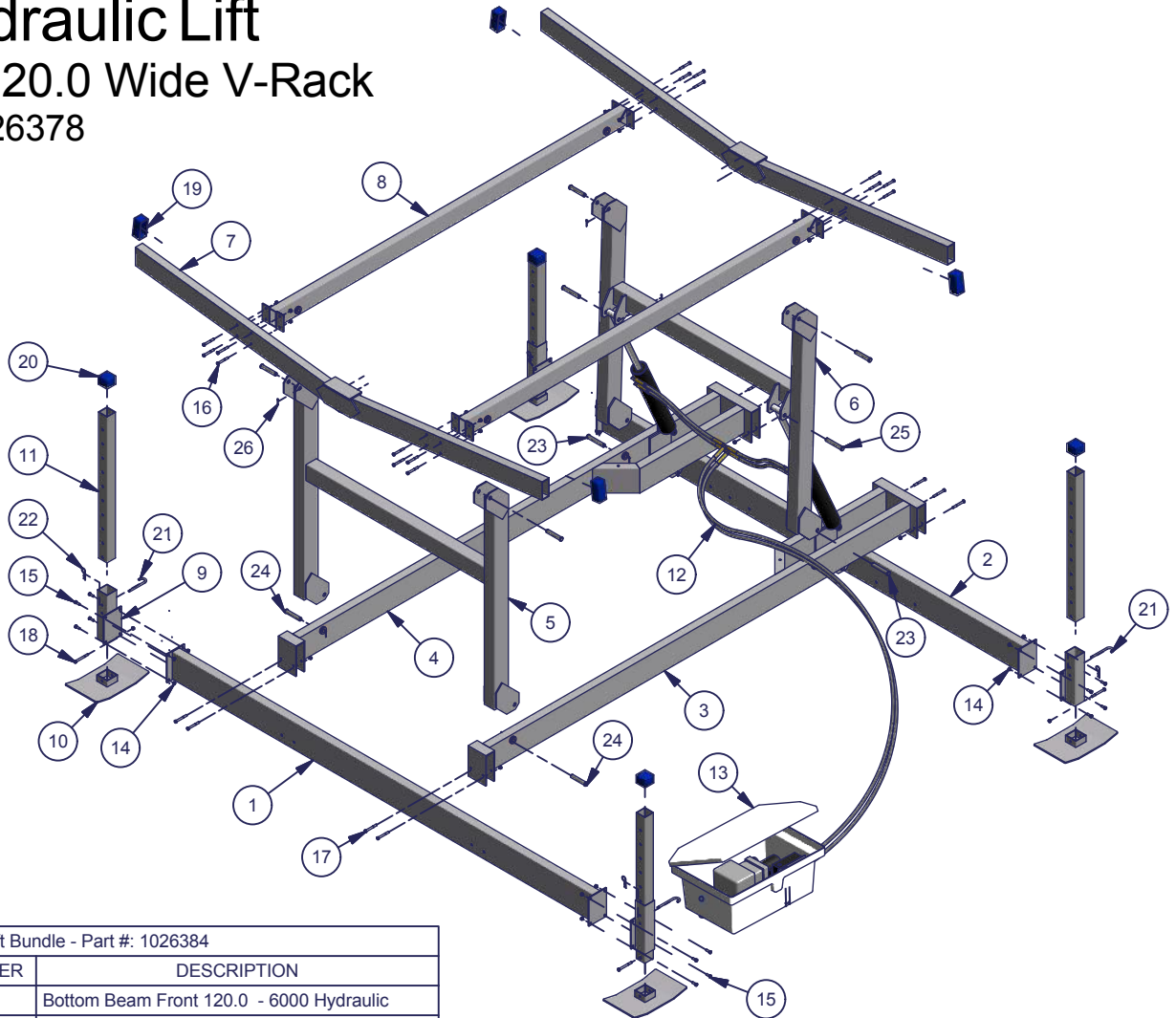
Hydraulic Components Part #'s			
ITEM	QTY	PART NUMBER	DESCRIPTION
12	1	1025996	Hydraulic 2-Ram Kit 2.75 X 20
13	1	1026120	Hydraulic Box W/ Reversible Pump And Remote
-	1	1001028	Fiberglass Box- Hydraulic Lift
-	1	1007885	Wdmt Cradle for Reversible Pump
-	1	1025995	Hydraulic Pump Assembly - 2500 PSI
-	1	1026114	IFP Remote Wiring Harness W/ Box

Parts List "C"

Hardware Box - Part #: 1004532			
ITEM	QTY	PART NUMBER	DESCRIPTION
-	1	1002503	Bolt Bag Lift Hydraulic 4000/6000
14	46	1001802	Nut Hex 3/8-16 Brass
15	16	1002419	Bolt Hex 3/8-16 x 1.0 SS 304
16	16	1002431	Bolt Hex 3/8-16 x 2.75 SS 304
17	10	1002432	Bolt Hex 3/8-16 x 3.0 SS 304
18	4	1002434	Bolt Hex 3/8-16 x 3.5 SS 304
19	4	1001822	Cap Blue #1 - 2.0x4.5x1.5
20	4	1001819	Cap Blue #18 - 2.5x2.5x2.0
-	1	1007505	Bolt Bag Lift Hydraulic 61048
21	4	1002600	Pin-J 3/8 X 3-29/32 SS 304
22	4	1002278	MH Hair Pin Keeper #10 SS
23	2	1002647	Pin .75 x 5.5 SS 17-4 H1150
24	4	1002645	Pin .75 x 4.5 SS 17-4 H1150
25	6	1002644	Pin .75 x 4.0 SS 17-4 H1150
26	12	1023968	Pin Cotter 5/32 x 1.5 SS
-	2	1024433	5/8" OD Hose Clamp
-	2	1014201	#12 x 3/4 Self Tapping Screw

## 61060 Hydraulic Lift

60.0 High X 120.0 Wide V-Rack  
Part Number: 1026378



Lift Bundle - Part #: 1026384

ITEM	QTY	PART NUMBER	DESCRIPTION
1	1	1007362	Bottom Beam Front 120.0 - 6000 Hydraulic
2	1	1007364	Bottom Beam Rear 120.0 - 6000 Hydraulic
3	1	1003622	Lift Side Left High Lift - 6000 Hydraulic
4	1	1003621	Lift Side Right High Lift - 6000 Hydraulic
5	1	1003620	I-Beam High Lift Front - 6000 Hydraulic
6	1	1003619	I-Beam High Lift Rear - 6000 Hydraulic
7	2	1026382	Wdmt V Rack 120.0 - 6000 Hydraulic
8	2	1007365	Rack Beam Side Hydraulic 6000 Lbs
9	4	1007320	Leg Pocket Hydraulic 4/6000 Lbs
10	4	1007404	Foot Pad C-3
11	4	1003944	Leg Post 36.0 - C-3

Hydraulic Components Part #'s

ITEM	QTY	PART NUMBER	DESCRIPTION
12	1	1025996	Hydraulic 2-Ram Kit 2.75 X 20
13	1	1026120	Hydraulic Box W/ Reversible Pump And Remote
-	1	1001028	Fiberglass Box- Hydraulic Lift
-	1	1007885	Wdmt Cradle for Reversible Pump
-	1	1025995	Hydraulic Pump Assembly - 2500 PSI
-	1	1026114	IFP Remote Wiring Harness W/ Box

Hardware Box - Part #: 1004532

ITEM	QTY	PART NUMBER	DESCRIPTION
-	1	1002503	Bolt Bag Lift Hydraulic 4000/6000
14	46	1001802	Nut Hex Flange 3/8-16 Brass
15	16	1002419	Bolt Hex 3/8-16 x 1.0 SS 304
16	16	1002431	Bolt Hex 3/8-16 x 2.75 SS 304
17	10	1002432	Bolt Hex 3/8-16 x 3.0 SS 304
18	4	1002434	Bolt Hex 3/8-16 x 3.5 SS 304
19	4	1001822	Cap Blue #1 - 2.0x4.5x1.5
20	4	1001819	Cap Blue #18 - 2.5x2.5x2.0
-	1	1007505	Bolt Bag Lift Hydraulic 61048
21	4	1002600	Pin-J 3/8 X 3-29/32 SS 304
22	4	1002278	MH Hair Pin Keeper #10 SS
23	2	1002647	Pin .75 x 5.5 SS 17-4 H1150
24	4	1002645	Pin .75 x 4.5 SS 17-4 H1150
25	6	1002644	Pin .75 x 4.0 SS 17-4 H1150
26	12	1023968	Pin Cotter 5/32 x 1.5 SS
-	2	1024433	5/8" OD Hose Clamp
-	2	1014201	#12 x 3/4 Self Drilling Screw

## ASSEMBLY INSTRUCTIONS

### **⚠ WARNING** - PUT SAFETY FIRST

NOT COMPLYING WITH THE PROCEDURES AND PRECAUTIONS OUTLINED IN THIS MANUAL MAY RESULT IN PERSONAL INJURY OR DEATH AND WILL INVALIDATE THE WARRANTY.

Your safety is the most important issue related to this product.

- Fully read and understand each step before proceeding with that step.
- Wear protective gloves, clothing and eyewear when assembling and installing the lift.
- Do not assemble, install or use this product if items are missing or damaged.

For ease of assembly find a flat area with plenty of room to assemble lift. The following tools will be needed for assembling lift:

• 7/16" Wrench • Pair of 9/16" Wrenches • Measuring Tape • Sharp Knife or Razor • Phillips head screw driver

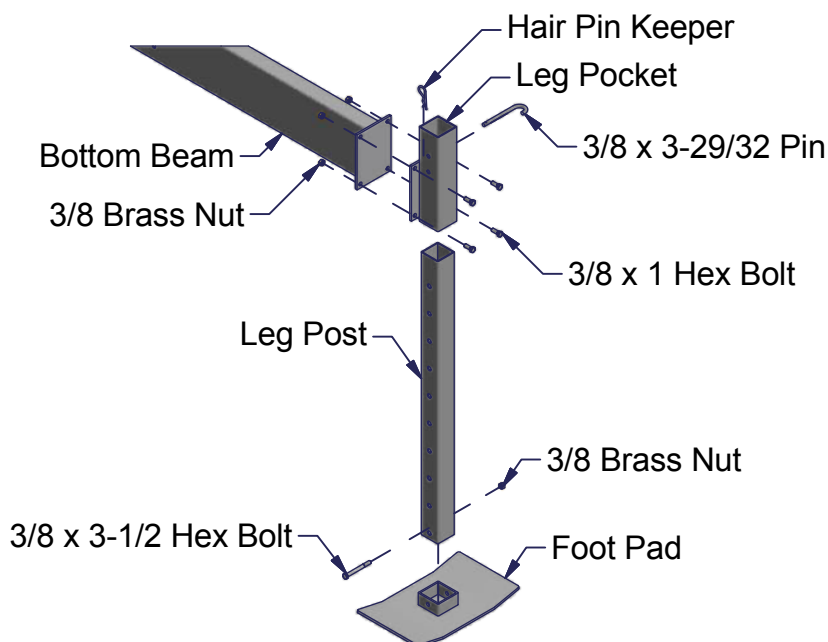
### STEP 1

Attach all four Leg Pockets to Bottom Beams using four 3/8 x 1 Hex Bolts and four 3/8 Brass Nuts at each place - as shown.

Insert all four Leg Posts into Foot Pads, secure using one 3/8 x 3-1/2 Hex Bolt and one 3/8 Brass Nut at each place - as shown.

Insert all four Leg Posts into Leg Pockets. At the desired height insert one 3/8 x 3-29/32 Pin and secure with one Hair Pin Keeper in each place - as shown.

**Note:** The leg height should be set at a constant height for all four legs. The final height will be determined during the installation phase. When installing lift in shallow water (30" or less) Leg Pockets should point up - as shown. If in deep water (30" or deeper) Leg Pockets should point downward.

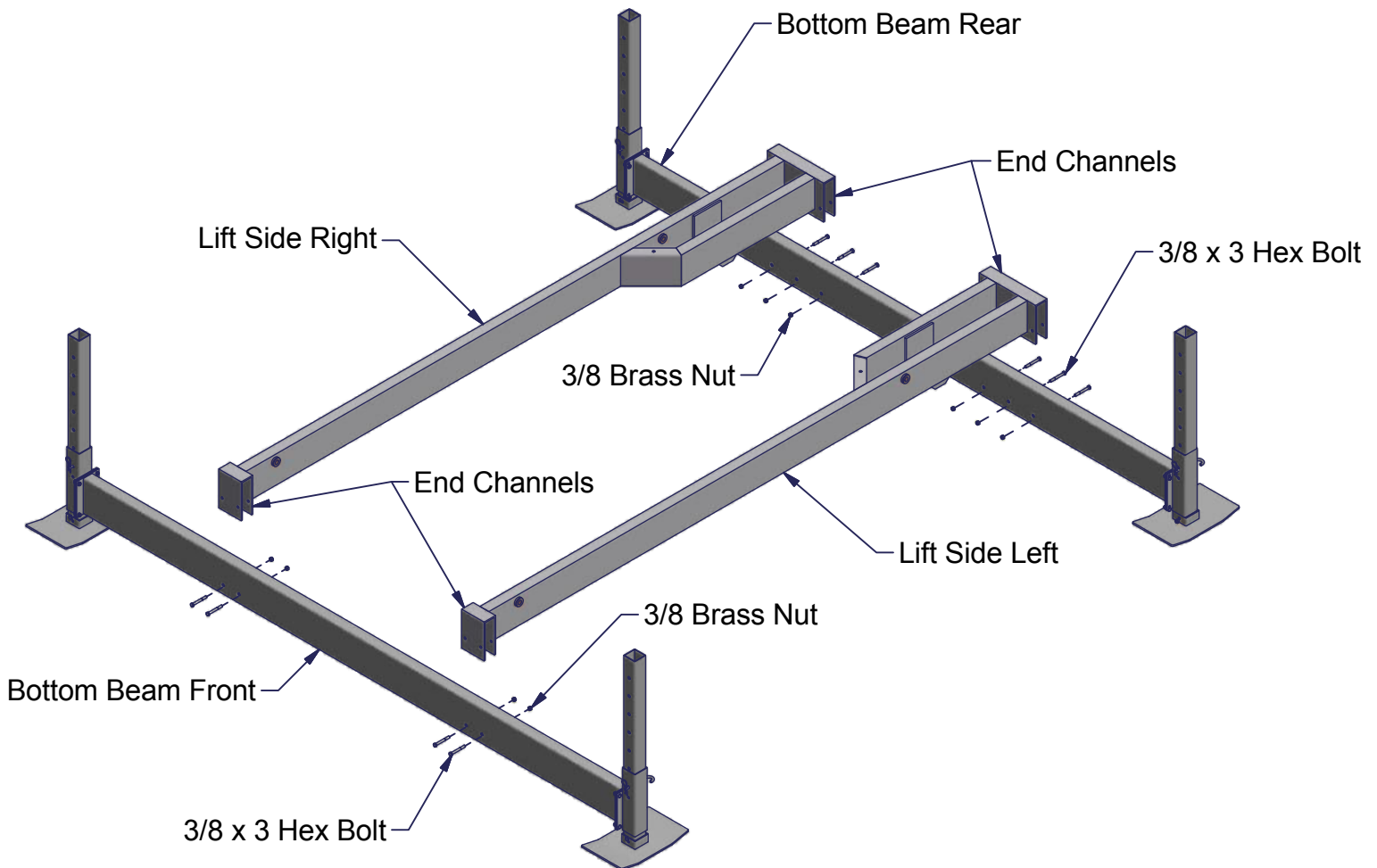




## STEP 2

Slide the Lift Side Left and Lift Side Right End Channels on to the two Bottom Beams. Place the Lift Sides on the Bottom Beams so the bolt holes match - as shown. Secure each Lift Side to the Bottom Beam Front using two 3/8 x 3 Hex Bolts and two 3/8 Brass Nuts. Secure each Lift side to the Bottom Beam Rear using three 3/8 x 3 Hex Bolts and three 3/8 Brass Nuts - as shown below.

**Note:** Heads of bolts should face to the outside of the lift.



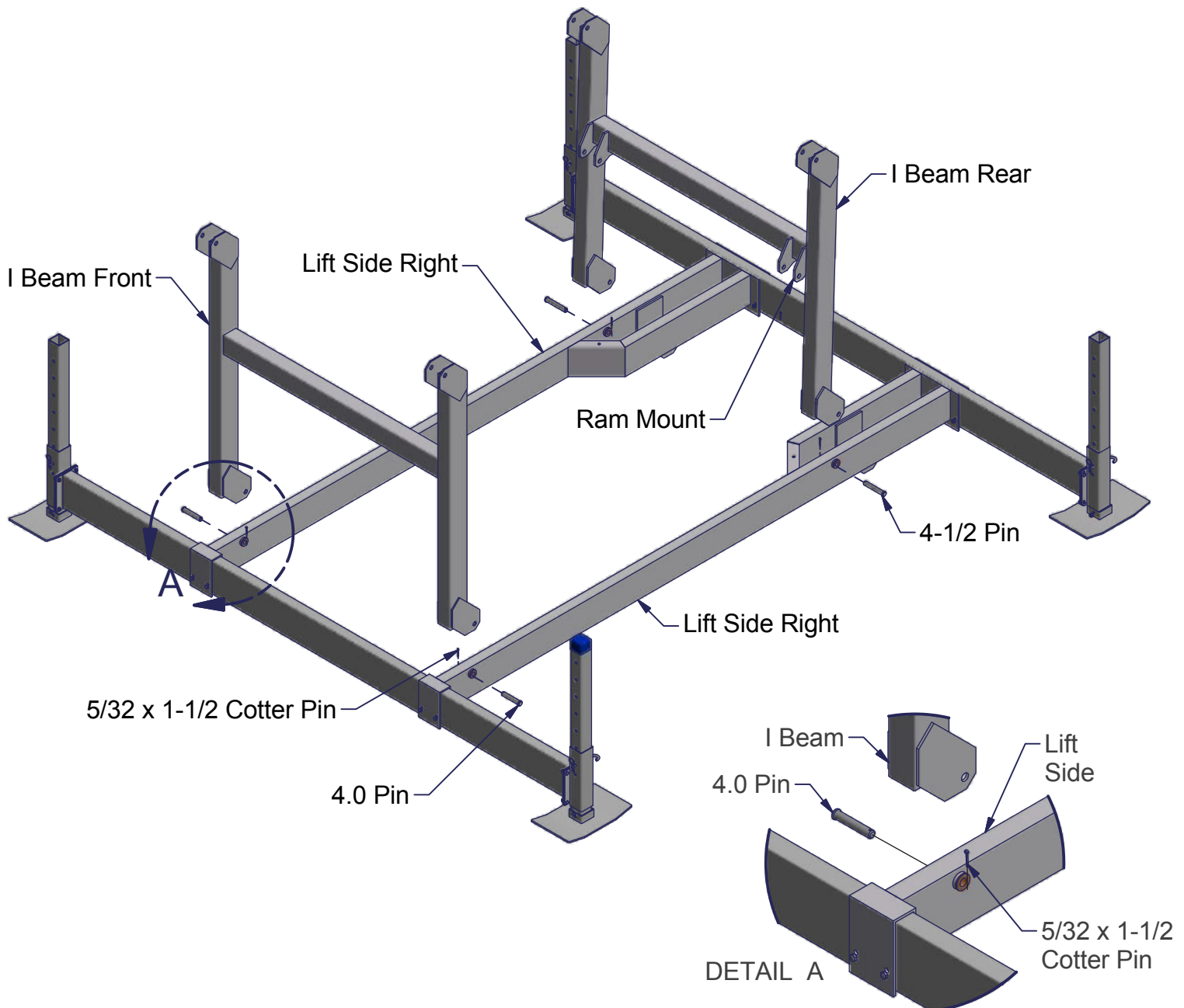
## STEP 3

Attach the I Beam Front and I Beam Rear to the proper Lift Sides as shown, using two 4.0 Pins for the I Beam Front and two 4-1/2 Pins for the I Beam Rear. Insert one 5/32 x 1-1/2 Cotter Pin into each pin and bend with needle nose pliers.

**Note:** The longer portion of the I Beams should be positioned facing down. I Beam Rear Ram Mounts should face forward to center of lift - as shown.

**Tip:** When inserting pins use hammer to tap pin in place if necessary.

**Note:** Be sure that all I Beam Connections on the Lift Sides have Bushings in them - as shown in Detail "A."



# HYDRAULIC BOAT LIFTS



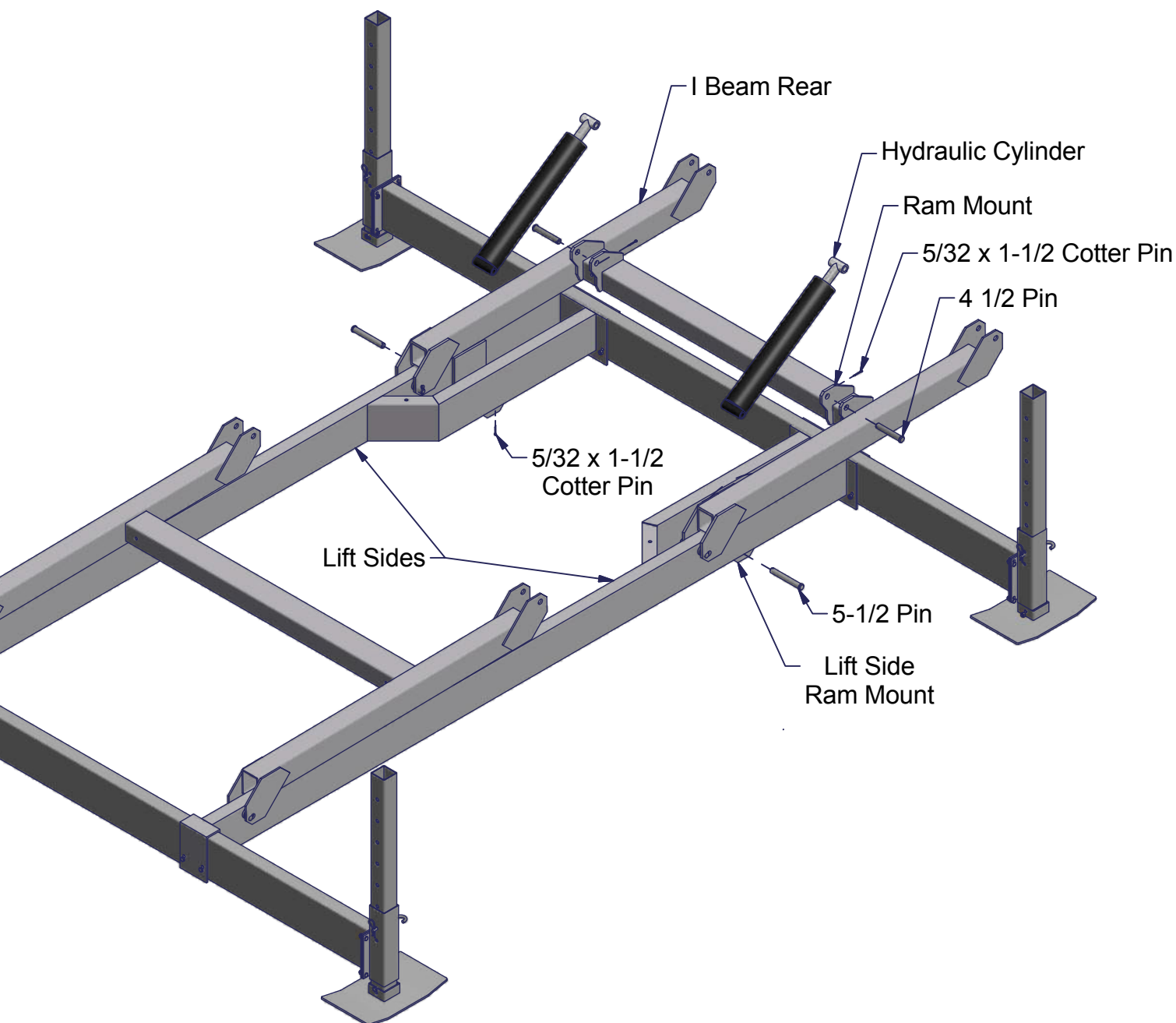
## STEP 4

Pin the base of each Hydraulic Cylinder to the Lift Side Ram Mounts using one 5.0 Pin and one 5/32 x 1-1/2 Cotter Pin in two places - as shown. Bend cotter pins with needle nose pliers after installed.

**Note:** Each Hydraulic Cylinder has two fittings that connect the hose to the ram. These fittings should be facing up when positioning ram on the lift.

Pin the top of each Hydraulic Cylinder to the I Beam Ram Mounts using one 4-1/2 Pin and one 5/32 x 1-1/2 Cotter Pin in two places - as shown. Bend cotter pins with needle nose pliers after installed.

**Note:** Do not remove plastic ties on hoses. After Hydraulic Cylinders have been installed make sure hoses are positioned under lift sides and in a location where they will not get pinched or cut by moving parts. Use caution to avoid scratching paint on Hydraulic Cylinders.

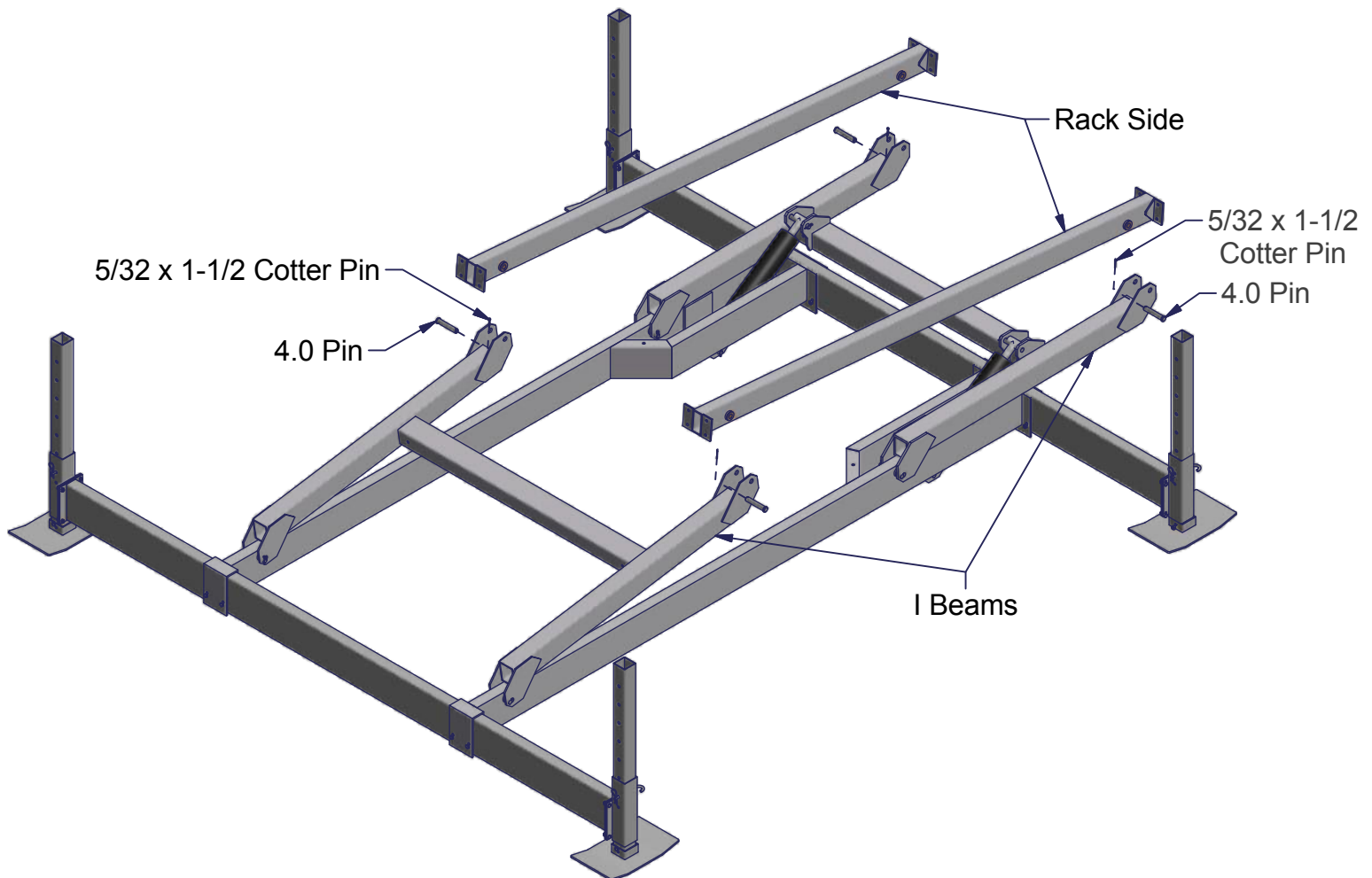


## STEP 5

Attach each Rack Side to I Beams using two 4.0 Pins and two 5/32 x 1-1/2 Cotter Pins - as shown. Bend cotter pins with needle nose pliers after inserted.

**Note:** The Rack Sides have drain holes in them. Be sure the drain holes face down.

**Note:** Heads of pins should face to the outside of the lift.

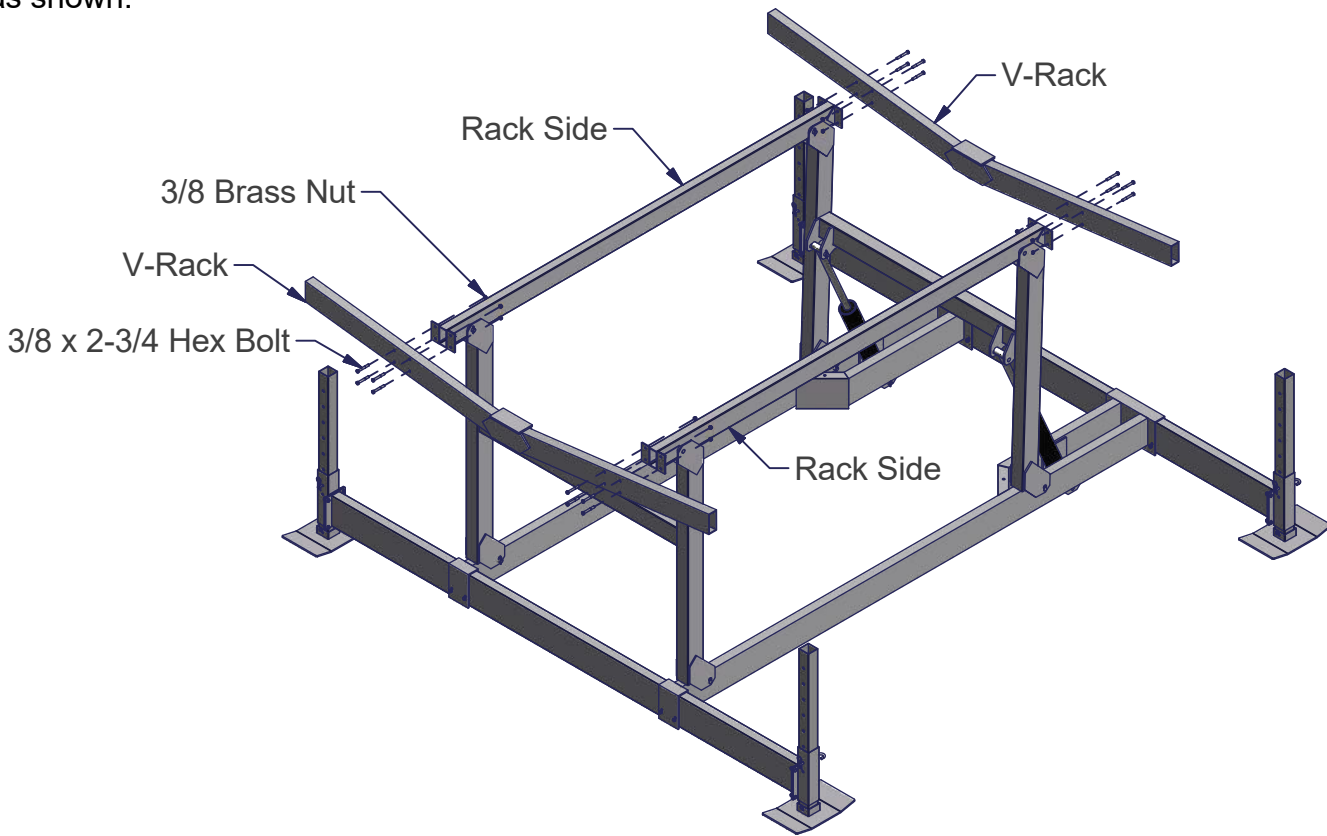


# HYDRAULIC BOAT LIFTS



## STEP 6

Attach V-Racks to Rack Sides. Secure in two places with four 3/8 x 2-3/4 Hex Bolts and four 3/8 Brass Nuts - as shown.

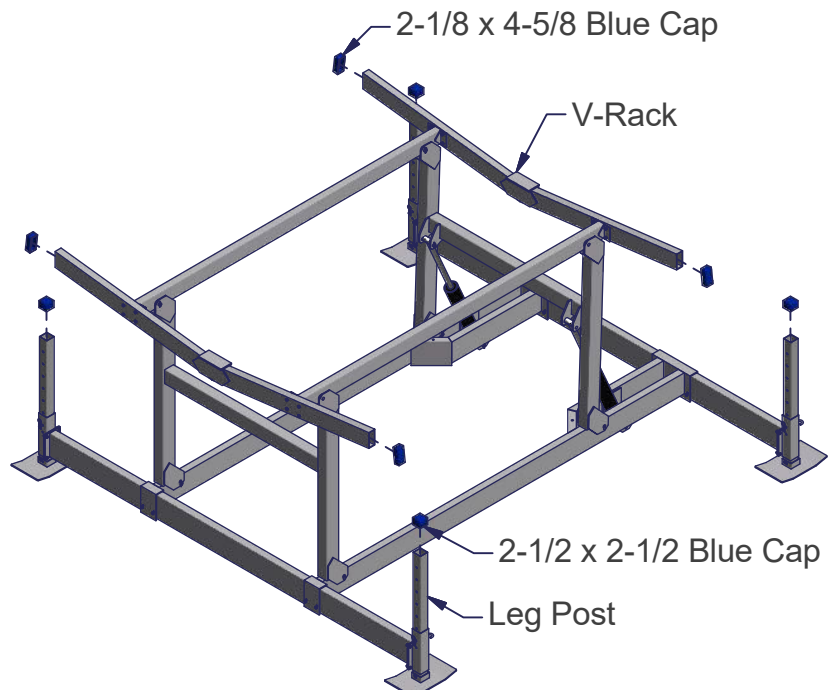


## STEP 7

Insert one 2-1/2 x 2-1/2 Blue Cap over each Lift Leg in four places - as shown.

Insert two 2-1/8 x 4-5/8 Blue Caps over each V-Rack - as shown.

**Note:** Attach hydraulic hoses to hydraulic pump box according to hydraulic pump box instructions.





## Installation Instructions

**⚠ WARNING** NOT COMPLYING WITH THE PROCEDURES AND PRECAUTIONS OUTLINED IN THIS MANUAL MAY RESULT IN PERSONAL INJURY OR DEATH AND WILL INVALIDATE THE WARRANTY. Do not under any circumstances, endanger yourself or risk damage to your lift or boat when installing.

-Situations will widely vary between installation sites. ShoreMaster recommends that your dealer, or other trained boat lift installer, train you and perform the initial installation.

-To protect your skin and eyes always wear leather gloves, clothing and safety glasses when assembling and installing the lift.

-Do not assemble, install or use this product if items are missing or damaged.

The following are guidelines or suggestions for installation.

### STEP 1

Measure the water depth of the position you want to locate the lift. Measurements should be taken at both the projected position of the end nearest shore and end furthest from shore.

### STEP 2

Before installing, adjust lift legs so the boat can float into position before raising, while still allowing a high enough position so the boat can be fully raised up and out of the water.

### STEP 3

Carefully place the lift into position alongside the dock so that the hydraulic pump and operating controls can easily be set on the dock. Ask your dealer about a wheel caddy unit to allow your lift to be rolled into position.

### STEP 4

Lake and river bottoms can frequently be uneven. Ensure that your lift is level. Measure the distance from the top of the cross beam to the water surface. The distance at each of the four corners of the lift should be within two inches of each other. If they are not, adjust the legs accordingly.

**Note:** If the lift legs will extend 3 feet or more, ShoreMaster recommends deep water braces to stabilize and strengthen the lift. Ask your dealer for more information.

### **⚠ WARNING**

To avoid personal injury or death the lift must be resting on the water bottom in a level, secure, and stable position for safe operation. An unstable lift installation could result in tipping of the lift during operation, causing damage to watercraft and a crushing or pinching injury to the operator or bystanders.


### STEP 5

After loading and operating the lift proceed to the operating instructions, remove the boat, and recheck that the lift remains level.

## Operating Instructions

### **WARNING**

When first using the boat lift after installation, the weight of the boat may cause the lift to settle and become unbalanced. To avoid personal injury or death, make sure people are not inside, under, or in the immediate vicinity of the lift until you are certain the lift has stabilized.

 **WARNING** NOT COMPLYING WITH THE PROCEDURES AND PRECAUTIONS OUTLINED IN THIS MANUAL MAY RESULT IN PERSONAL INJURY OR DEATH AND WILL INVALIDATE THE WARRANTY. Do not under any circumstances, endanger yourself or risk damage to your lift or boat when installing.

Now that you have installed and leveled the lift, you are ready to raise your boat for the first time. Prior to use, see to it that anyone who may use the lift looks upon the unit not as a toy but a piece of heavy equipment that deserves your respect and good judgment.

- Before allowing anyone to operate the lift, be sure they fully understand the proper operating procedure.
- Do not exceed maximum capacity of the lift; overloading may cause mechanical failure and serious personal injury.
- Do not allow anyone who is in the water within 6 feet of the lift.
- Do not allow anyone on, in, or under the lift while operating.

When operating the lift, the following procedures must be adhered to:

### STEP 1

Be sure the cradles or bunks (sold separately) are positioned below the water surface so they will not interfere with the boat floating into position.

### STEP 2

Properly balance and center the boat on the lift prior to raising. The boat should be positioned with the center of gravity near the middle of the lift. For most rear engine mounted boats, this requires you to position the boat mostly forward in the lift.

### STEP 3


Carefully bring the lift up until the bunks or cradles have secured the boat. Then, stop the lift and check to see that the bunks or cradles have automatically positioned themselves to the shape of the hull, as they are designed to do. If so, continue bringing the boat out of the water until it is about one foot above the surface. Stop the lift again and check the stability of the lift, particularly to see that it is fairly level and will not topple over. Finally, continue lifting the boat while paying close attention to the positioning of the lift until it is in the full upright and over center position.

### STEP 4

After loading and operating the lift, remove the boat and recheck that the lift remains level. (See STEP 4 of the Installation Instructions on previous page). If the lift is not level, the legs should be adjusted accordingly. Because the lift may settle and become unbalanced, the lift levelness should be rechecked two weeks after installation and periodically as needed.

### STEP 5

If the lift is located in an area where swimmers may dive into the water, make sure that they are warned of the lift's location when the boat is not present and the lift is hidden under the water. If you have a remote control device, raise the lift rack out of the water after departing to allow swimmers to see the location of the lift.

 **WARNING** To prevent serious personal injury or death, NEVER go under your boat when it is in the upright position. The lift is not intended as a maintenance platform. Always store your boat in the over center position. The over-center position will help prevent the boat from lowering if you experience a hydraulic leak or slipage.

## Storage and Off-Season Suggestions

Be sure to prevent rainwater from accumulating in your boat if you plan to leave it on the lift for a long-term storage. Rainwater accumulating in your bilge can quickly increase your gross weight over the lift capacity.

1. At all times, make sure that you adjust the height of the lift to limit wave action against the hull. A moving boat as a result of wave action will damage the lift and can take the boat off the lift.
2. ShoreMaster recommends disconnecting the hydraulics box and storing it indoors for the winter, or if you are not planning on using the lift for prolonged periods. To do this, simply disconnect the hoses from your hydraulics box by using the *quick disconnects* and connect the hoses together. This will ensure that the connecting hardware will remain clean.

### **WARNING**

To avoid personal injury or death, do not disconnect the hoses with the boat on the lift or the lift in the upright position. If the hoses are disconnected while the lift is in the upright position or with a boat on the lift, the lift may fall.

**TIP:** Do not disconnect the hoses when the lift is pressured against the upper or lower stops.

3. Booster-charge your battery using a 10-A charger at the beginning and end of the season. A mid-season boost may be required for heavy use. Prior to performing a booster charge, see the *Battery Tips Section* of the hydraulics box instructions (included with hydraulic box or available on the ShoreMaster website).
4. If your waterway freezes during the winter, you will need to remove your lift, as it will be damaged by ice flows.
5. When storing the boat, the lift must be in the upright over center gravity lock position for maximum safety. The over-center position will prevent the boat from lowering if you experience a hydraulic leak or slippage.
6. Your lift can be left in any position when not in use (without a boat on the lift), although we do recommend leaving the lift in the up position to prevent the bunks from becoming "slimy" and to avoid creating a hidden underwater obstruction.
7. Each spring and fall, inspect nuts and bolts for damage, wear, or loose connections. At the same time, inspect the frame and pivot points for unusual wear, damage, or bent parts. Tighten, repair, or replace parts as needed. ShoreMaster dealers usually offer service visits. Please contact your dealer if you are unable or unwilling to perform maintenance or service to the lift.