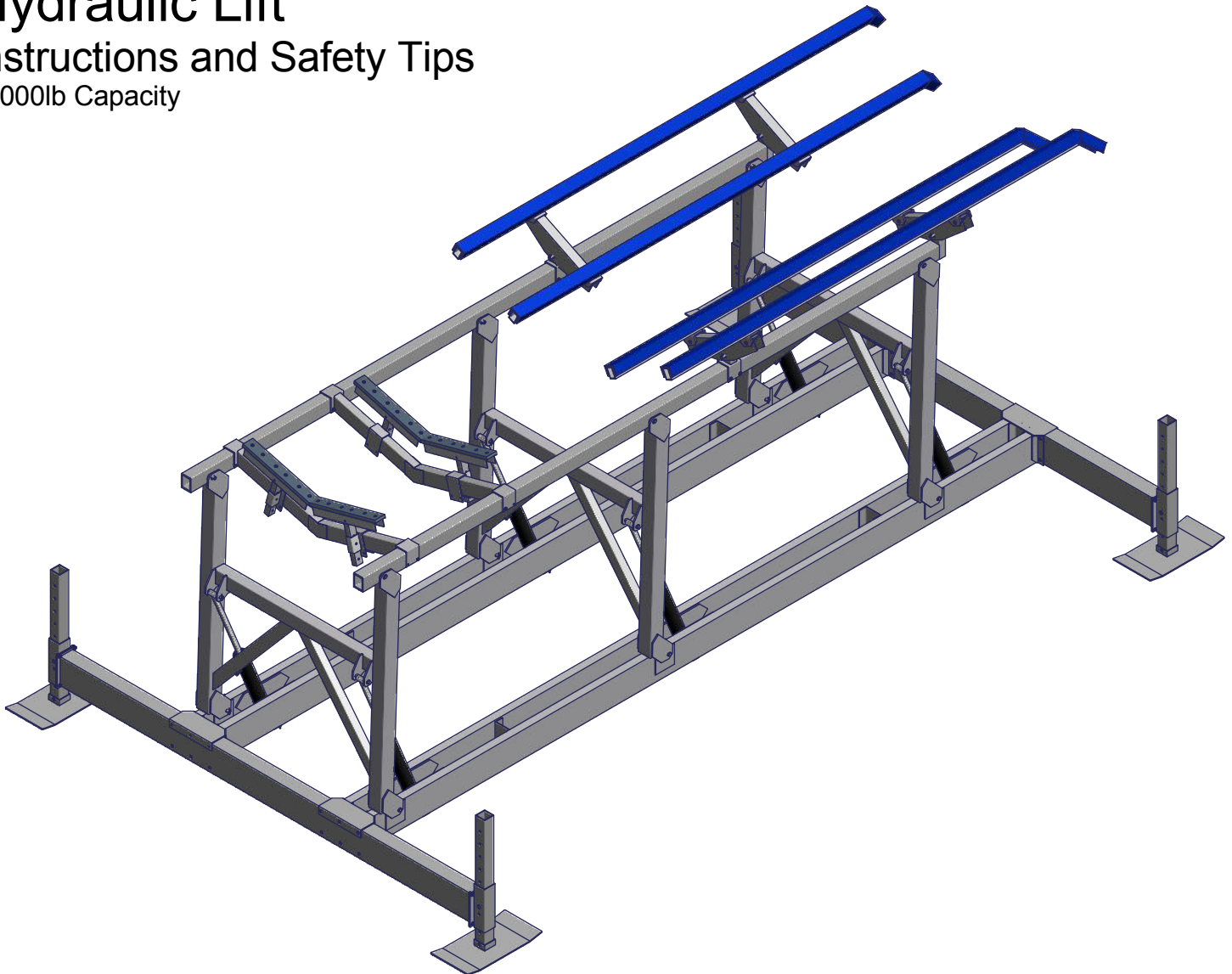


## Hydraulic Lift

### Instructions and Safety Tips

12000lb Capacity



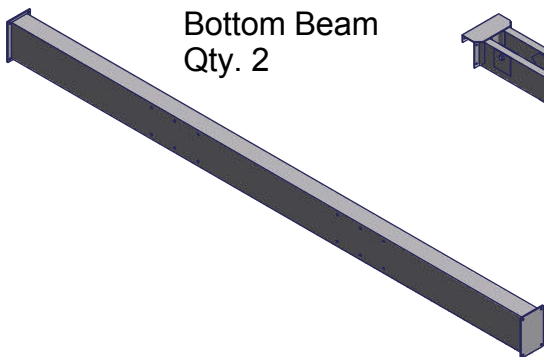
### **⚠ WARNING** - PUT SAFETY FIRST

1. NOT COMPLYING WITH THE PROCEDURES AND PRECAUTIONS OUTLINED IN THIS MANUAL MAY RESULT IN PERSONAL INJURY OR DEATH AND WILL INVALIDATE THE WARRANTY.
2. Before attempting to install or operate this hoist, study and fully understand the proper operating procedures and safety precautions outlined in this owner's manual.
3. Never exceed the recommended weight capacity of your lift. The lifted weight will include hull, engine, fuel, battery, added accessories or gear, and rain water or any other materials inside of the boat. Weigh your fully loaded boat at a certified scale to be absolutely sure of the total weight.
4. To avoid injury or death do not allow anyone on, in, or under the lift while operating.
5. If you have any questions about assembly, installation, operation or suitability of this product, contact an authorized dealer or ShoreMaster directly.

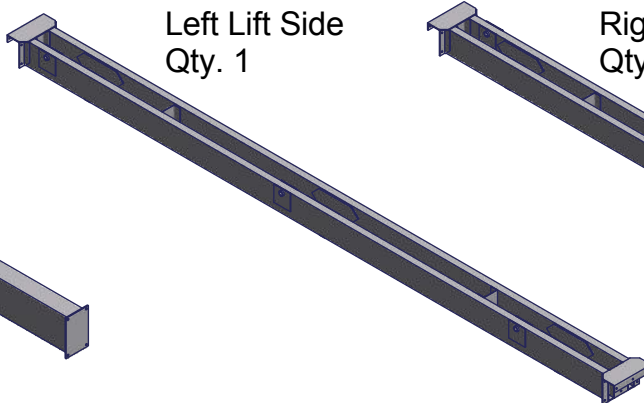
# HYDRAULIC BOAT LIFTS

## Parts List

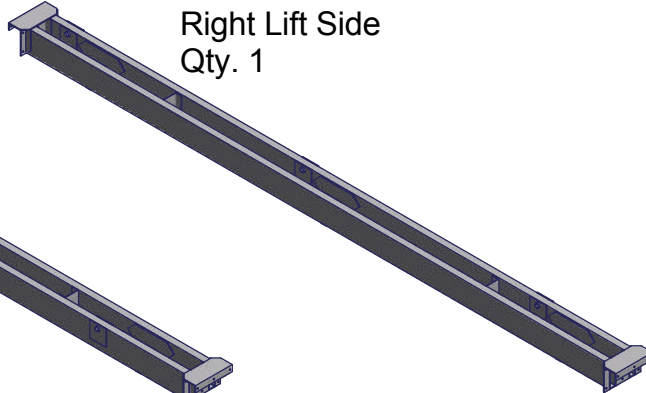
Bottom Beam  
Qty. 2



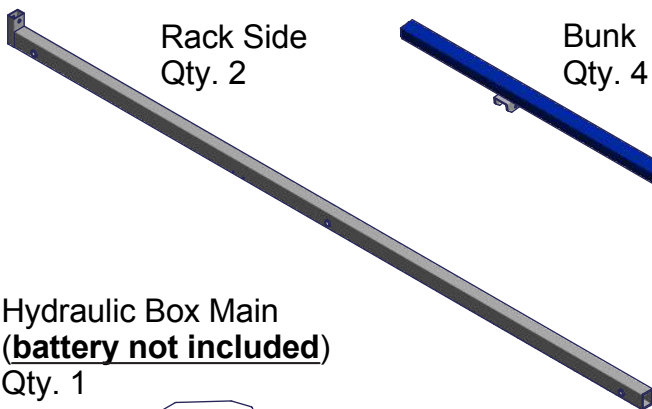
Left Lift Side  
Qty. 1



Right Lift Side  
Qty. 1



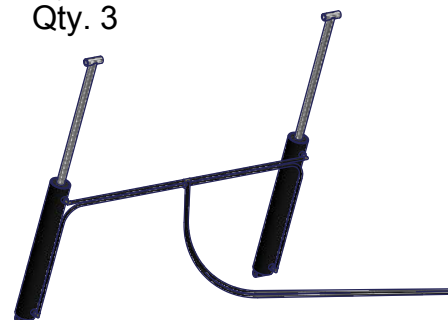
Rack Side  
Qty. 2



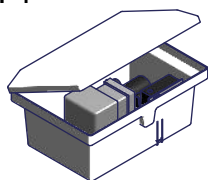
Bunk  
Qty. 4



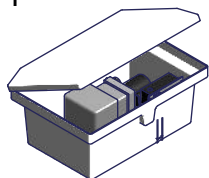
Hydraulic Ram Kit  
Qty. 3



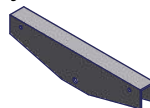
Hydraulic Box Main  
(**battery not included**)  
Qty. 1



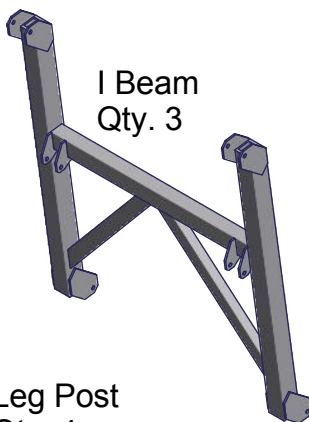
Hydraulic Box Secondary  
(**battery not included**)  
Qty. 1



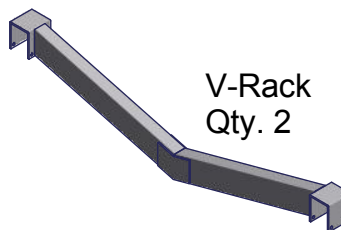
Bunk Channel  
Qty. 4



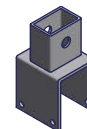
I Beam  
Qty. 3



V-Rack  
Qty. 2



Bunk Bracket  
Qty. 2



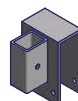
Leg Post  
Qty. 4



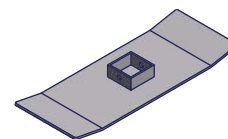
Cradle Leg  
Qty. 4



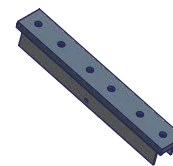
Cradle Pocket  
Qty. 4



Foot Pad  
Qty. 4



Cradle  
Qty. 4



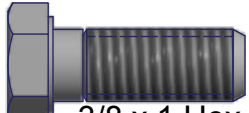
Leg Cap  
Qty. 4



Leg Pocket  
Qty. 4



## Fasteners and Hardware



3/8 x 1 Hex Bolt  
Qty. 16



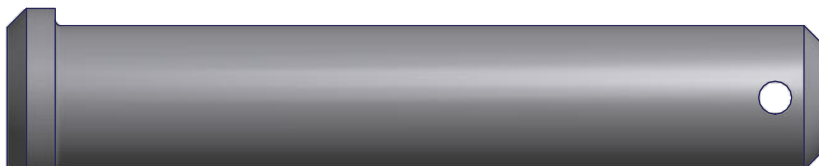
3/8 x 4 Hex Bolt  
Qty. 4



1/2 x 4 Hex Bolt  
Qty. 12



3/8 x 5 Hex Bolt  
Qty. 24



4.0 Pin  
Qty. 4



4-1/2 Pin  
Qty. 6



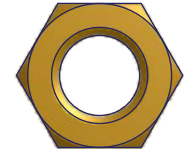
5-1/2 Pin  
Qty. 12



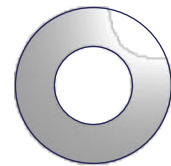
6.0 Pin  
Qty. 6



3/8 Flange Nut  
Qty. 52



1/2 Brass Nut  
Qty. 12



3/8 Flat Washers  
Qty. 12



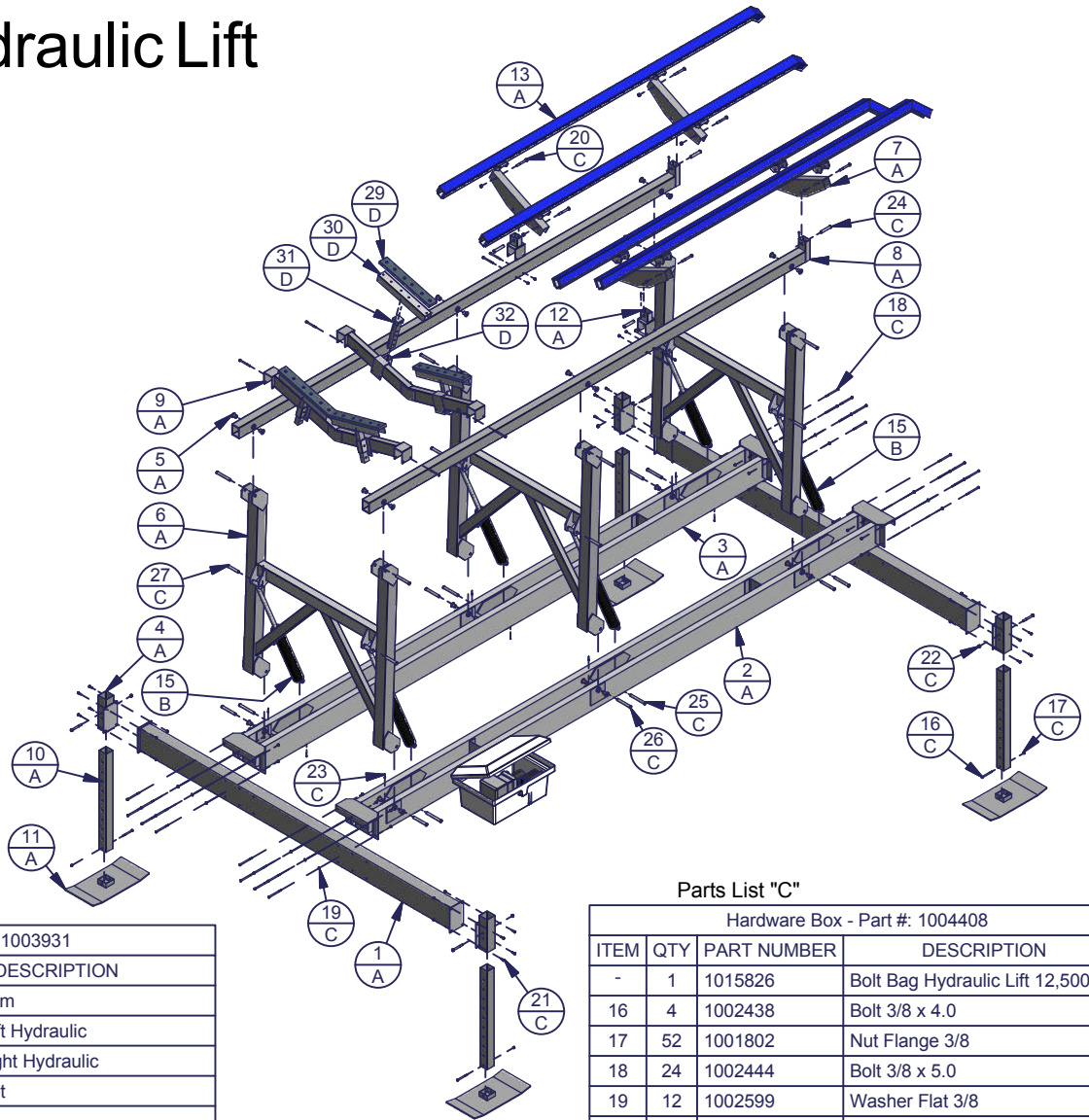
5/32 x 1-1/2 Cotter Pin  
Qty. 28

# HYDRAULIC BOAT LIFTS

## 1251160 Hydraulic Lift

11 ft wide x 60" Travel

Part Number: 1024720



Parts List "A"

Hydraulic Bundle - Part #: 1003931			
ITEM	QTY	PART NUMBER	DESCRIPTION
1	2	1003609	Bottom Beam
2	1	1003631	Lift Side Left Hydraulic
3	1	1003632	Lift Side Right Hydraulic
4	4	1003605	I Leg Pocket
5	24	1001799	Bushing
6	3	1003612	I Beam
7	4	1002819	Bunk Channel 24.00
8	2	1003630	Rack Beam Side Hydraulic
9	2	1003614	V Rack
10	4	1004744	I Leg
11	4	1003641	Foot Pad
12	2	1003648	Bracket Pivot Bunk Hydraulic
13	4	1003386	Bunk w/ Vinyl 132.0

Parts List "B"

Hydraulic Components Part #'s			
ITEM	QTY	PART NUMBER	DESCRIPTION
14	1	1017053	Hyd Box W/ 110V Pump And Remote
15	3	1024593	Hydraulic 2-Ram Kit 2.75 x 20
-	1	1024839	Fiberglass Box Hydraulic Lift - 12,500
-	1	1003341	Hyd Pump W/ Remote And Harness
-	1	1000343	Hydraulic Remote Assembly
-	1	1001072	Hydraulic Pump Assy 110V Ifp Model

Parts List "C"

Hardware Box - Part #: 1004408			
ITEM	QTY	PART NUMBER	DESCRIPTION
-	1	1015826	Bolt Bag Hydraulic Lift 12,500
16	4	1002438	Bolt 3/8 x 4.0
17	52	1001802	Nut Flange 3/8
18	24	1002444	Bolt 3/8 x 5.0
19	12	1002599	Washer Flat 3/8
20	12	1002384	Bolt 1/2 X 4.0
21	16	1002419	Bolt 3/8 x 1.0
22	12	1001792	Nut 1/2
-	1	1007952	Hardware Bag Hydraulic 12,500
23	28	1023968	Pin Cotter 5/32 x 1.5
24	4	1002644	Pin .75 x 4.0
25	6	1000434	Pin .75 x 6.0
26	12	1002647	Pin .75 x 5.5
27	6	1002645	Pin .75 x 4.5
28	4	1001813	Blue Cap 3x3

Parts List "D"

Adjustable Cradle Pair - Part #: 1006967			
ITEM	QTY	PART NUMBER	DESCRIPTION
29	2	1001754	Adjustable Cradle Rubber
30	2	1004367	Channel 20.5 - Adjustable Cradle
31	2	1005652	Cradle Leg 12.0 Adjustable
32	2	1005653	Cradle Pocket Adjustable
-	1	1002234	Bolt Bag Cradle Adjustable

## ASSEMBLY INSTRUCTIONS

### **⚠ WARNING** - PUT SAFETY FIRST

NOT COMPLYING WITH THE PROCEDURES AND PRECAUTIONS OUTLINED IN THIS MANUAL MAY RESULT IN PERSONAL INJURY OR DEATH AND WILL INVALIDATE THE WARRANTY.

Your safety is the most important issue related to this product.

- Fully read and understand each step before proceeding with that step.
- Wear protective gloves, clothing and eyewear when assembling and installing the lift.
- Do not assemble, install or use this product if items are missing or damaged.

For ease of assembly find a flat area with plenty of room to assemble lift. The following tools will be needed for assembling lift:

1. Two 9/16" Wrenches
2. Two 3/4" Wrenches
3. Measuring Tape
4. Hammer
5. Needle Nose Pliers (for Cotter Pins)
6. Drill with 7/16" Bit

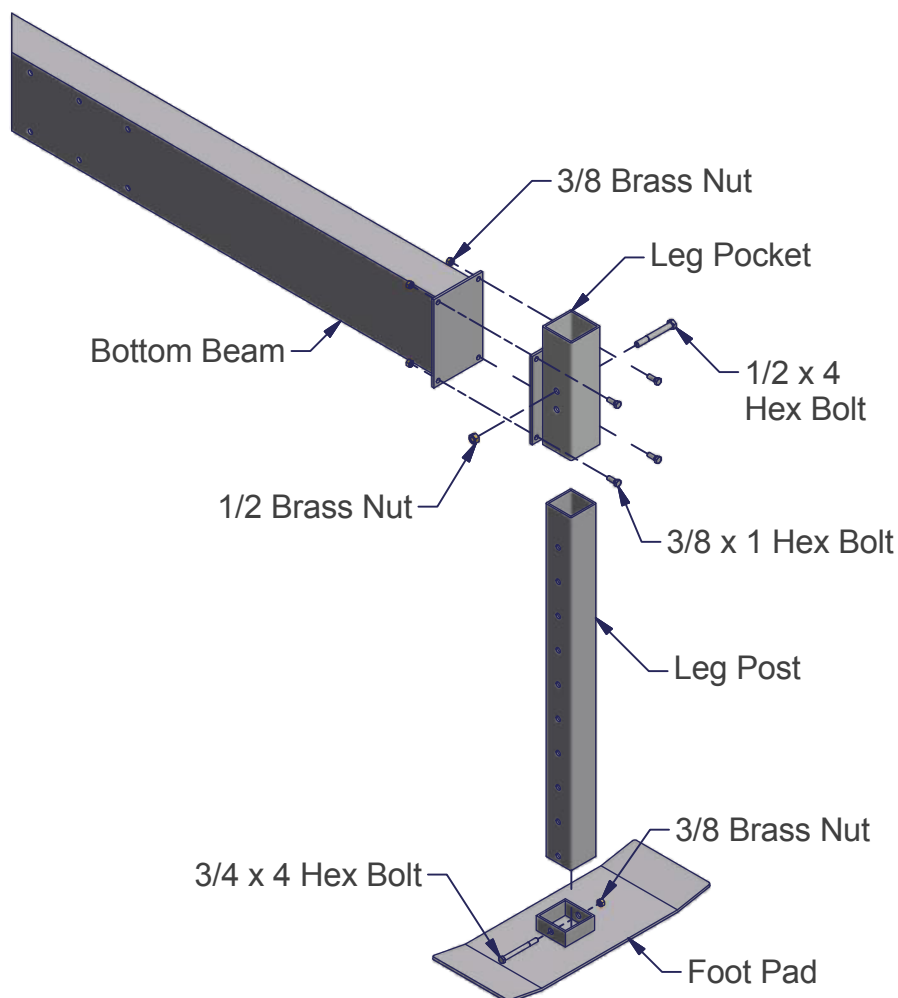
### STEP 1

Insert all four Leg Posts into Foot Pads, secure using one 3/8 x 4 Hex Bolt and one 3/8 Brass Nut each place - as shown.

Insert all four Leg Posts into Leg Pockets. At the desired height insert one 1/2 x 4 Hex Bolt and secure with one 1/2 Brass Nut in each place - as shown.

**Note:** The leg height should be set at a constant height for all four legs. The final height will be determined during the installation phase. When installing lift in shallow water (30" or less) Leg Pockets should point up - as shown. If in deep water (30" or deeper) Leg Pockets should point downward.

Attach one Leg Pocket to Bottom Beam in four places using four 3/8 x 1 Hex Bolts and four 3/8 Brass Nuts - as shown.



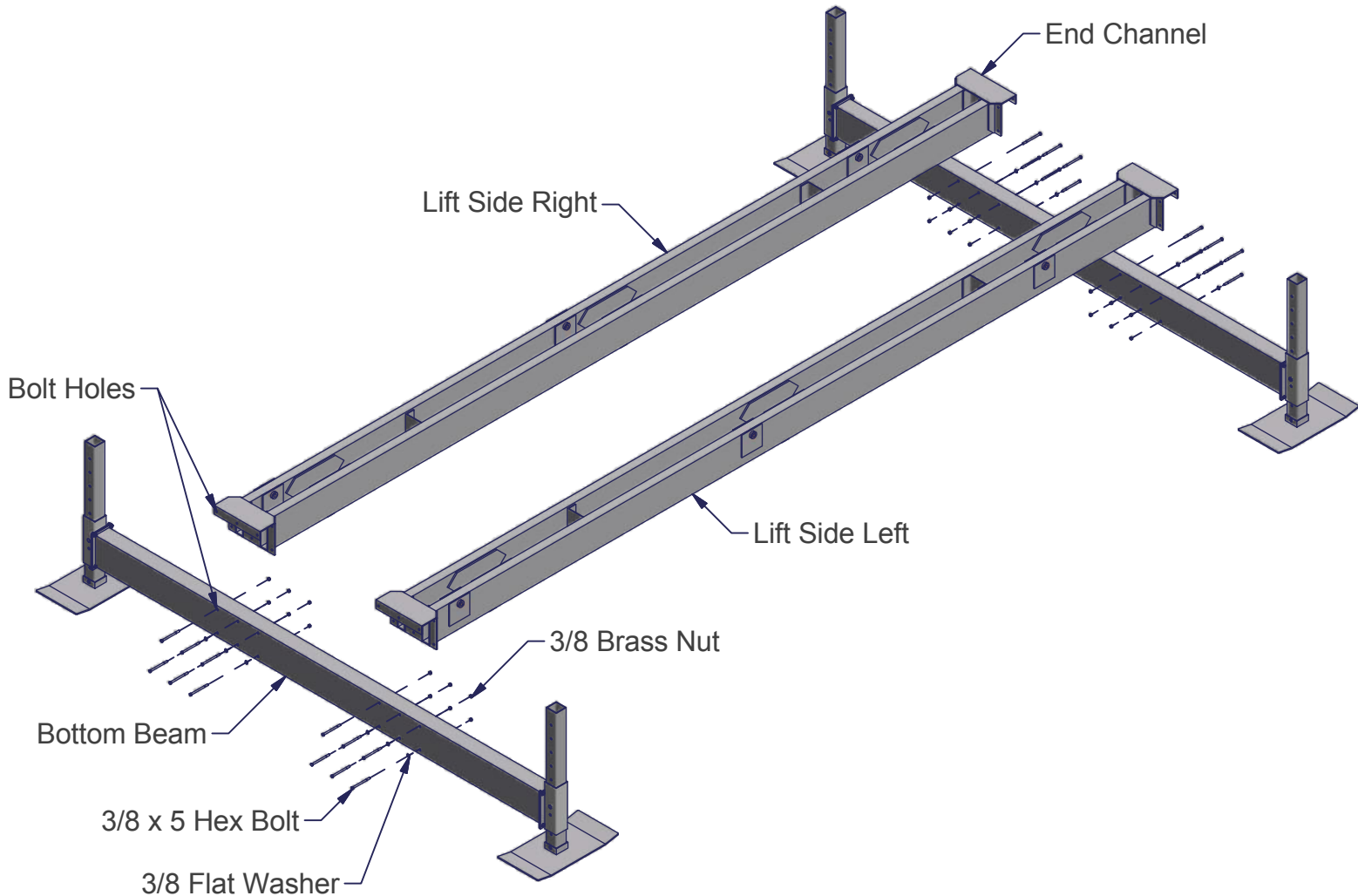
# HYDRAULIC BOAT LIFTS

## STEP 2

Slide the Lift Side Left and Lift Side Right End Channels on to the Bottom Beams. Position them so that Bolt Holes line up. Secure each Lift Side to one Bottom Beam with six 3/8 x 5 hex bolts, three 3/8 flat washers, and six 3/8 brass nuts at each connection - as shown.

**Note:** Be sure Lift Sides are positioned with I Beam Holes facing out.

**Note:** 3/8 flat washers are used on bottom bolts, on the bolt head side only (as shown).





# HYDRAULIC BOAT LIFTS

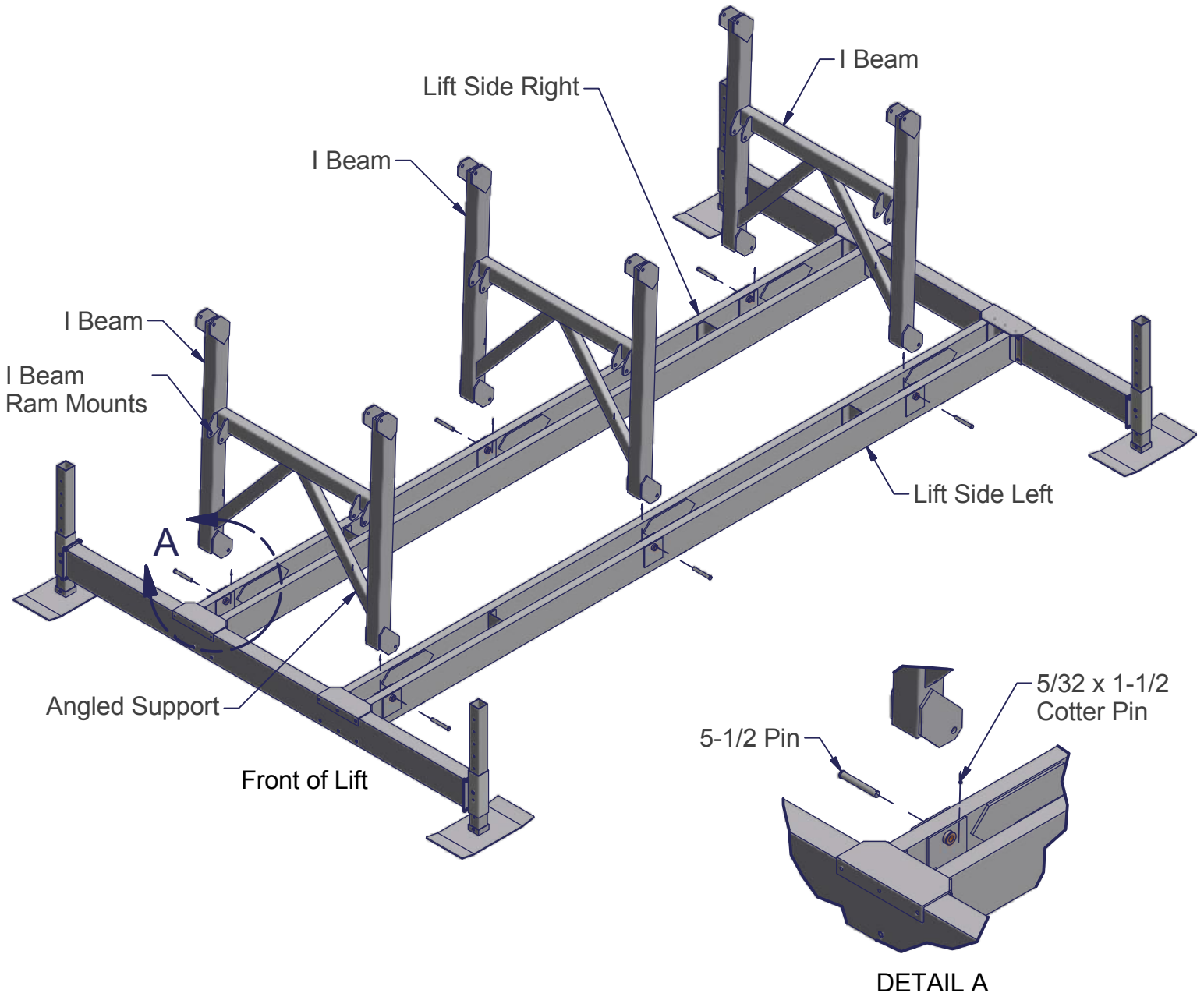
## STEP 3

Attach the I Beams to the proper Lift Sides as shown, using two 5-1/2 Pins for each I Beam. Insert one 5/32 x 1-1/2 Cotter Pin into each pin and bend with needle nose pliers.

**Note:** The Angled Support of the I Beams should be positioned facing down. I Beam Ram Mounts should face front of lift - as shown.

**Tip:** When inserting pins use hammer to tap pin in place if necessary.

**Note:** Be sure that all I Beam Connections on the Lift Sides have Bushings in them - as shown in "Detail A."



# HYDRAULIC BOAT LIFTS

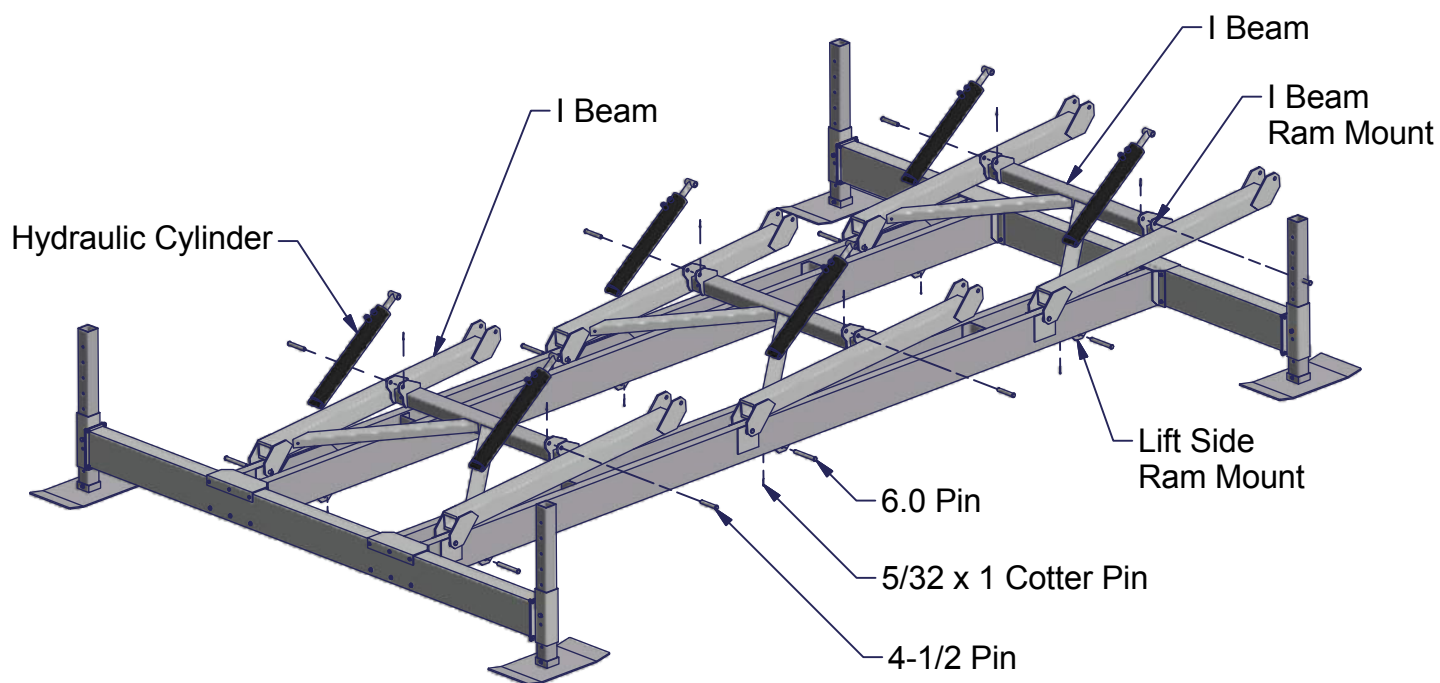
## STEP 4

Pin the base of each Hydraulic Cylinder to the Lift Side Ram Mounts using one 6.0 Pin and one 5/32 x 1-1/2 Cotter Pin in six places - as shown. Bend cotter pins with needle nose pliers after installed.

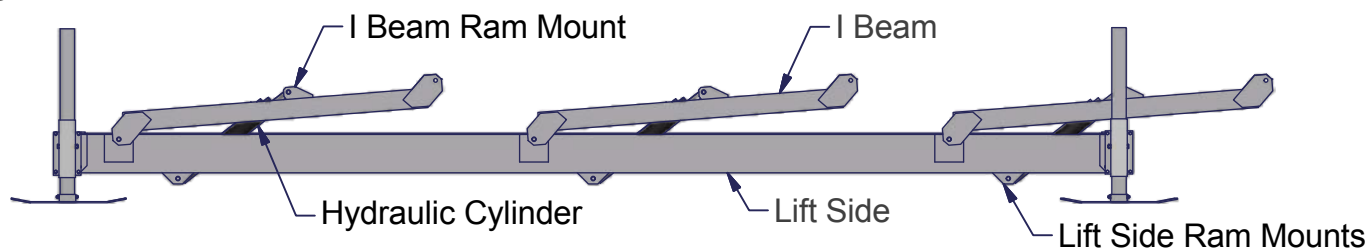
**Note:** Each Hydraulic Cylinder has two fittings that connect the hose to the ram. These fittings should be facing up when positioning ram on the lift.

Pin the top of each Hydraulic Cylinder to the I Beam Ram Mounts using one 4-1/2 Pin and one 5/32 x 1-1/2 Cotter Pin in six places - as shown. Bend cotter pins with needle nose pliers after installed.

**Note:** Do not remove plastic ties on hoses. After Hydraulic Cylinders have been installed make sure hoses are positioned under lift sides and in a location where they will not get pinched or cut by moving parts. Use caution to avoid scratching paint on Hydraulic Cylinders.



## SIDE VIEW





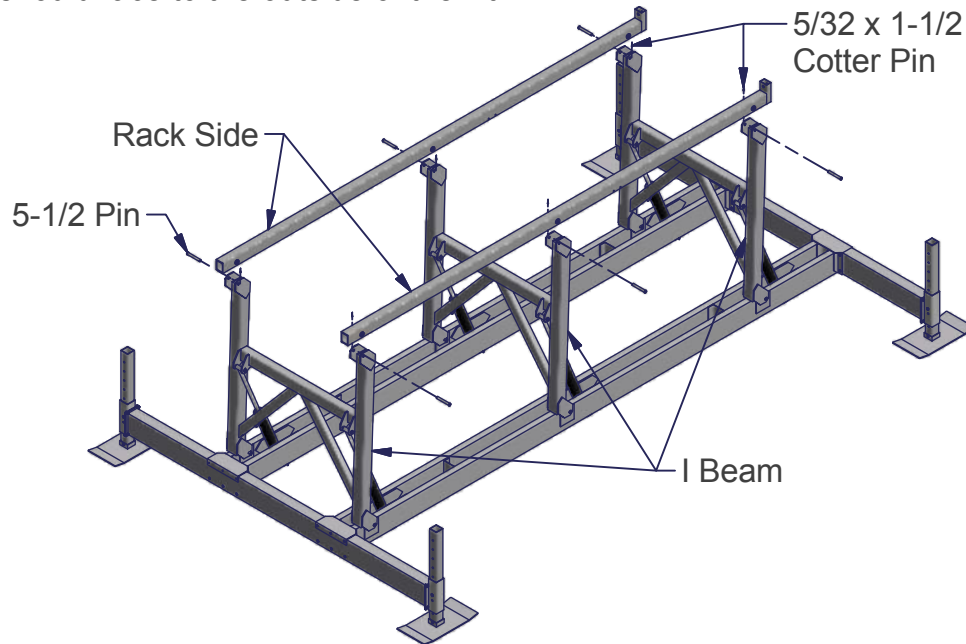
# HYDRAULIC BOAT LIFTS

## STEP 5

Attach each Rack Side to I Beams using two 5-1/2 Pins and two 5/32 x 1-1/2 Cotter Pins - as shown. Bend cotter pins with needle nose pliers after inserted.

**Note:** The Rack Sides have drain holes in them. Be sure the drain holes face down.

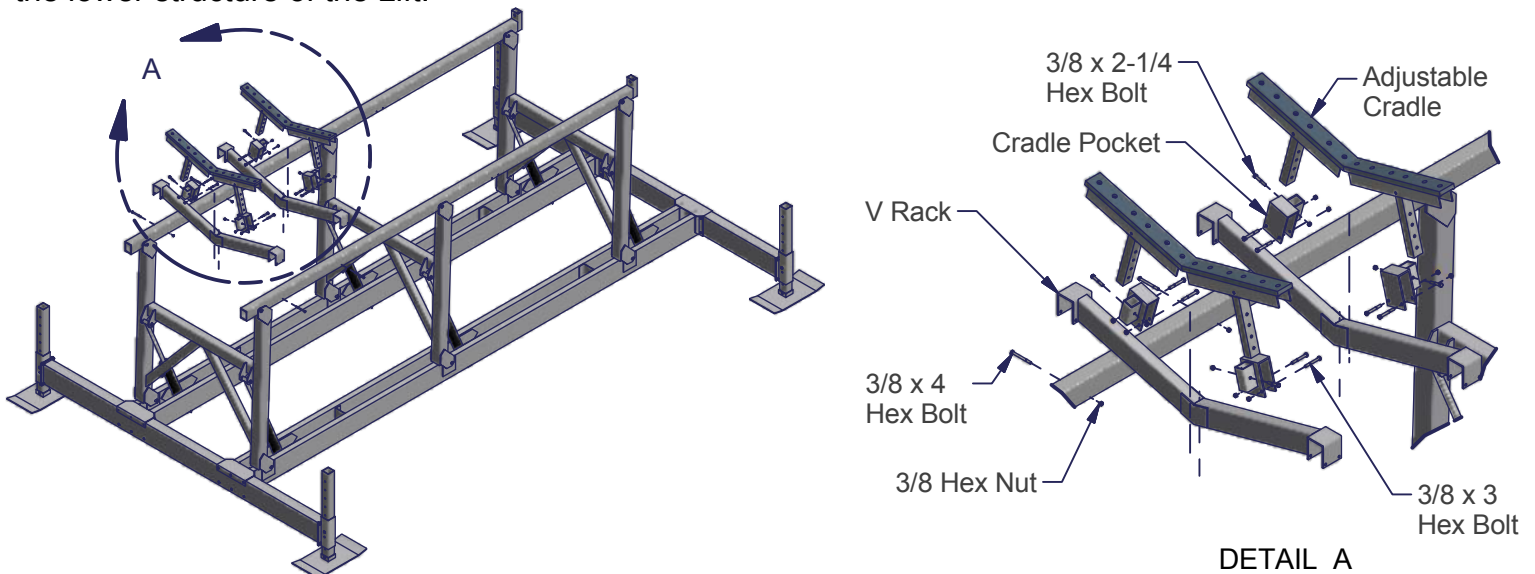
**Note:** Heads of pins should face to the outside of the lift.



## STEP 6

Slide each V Rack onto the Rack Sides. One 7/16" hole will need to be drilled in the Rack Side for each V Rack Connector Channel. Secure with one 3/8 x 4 Bolt and one 3/8 Brass Nut in each place - as shown in Detail "A". Slide cradle pockets over v racks and secure in place with two 3/8 x 3 hex bolts and two 3/8 hex nuts per cradle pocket. Insert the cradle legs into the cradle pockets and secure with one 3/8 x 2-1/4 hex bolt and one 3/8 hex nut per cradle leg - as shown in Detail "A". Adjust height of cradles to fit your application.

**Note:** The V Racks should be positioned so they or the attached Leg Pockets/Leg Post do not interfere with the lower structure of the Lift.



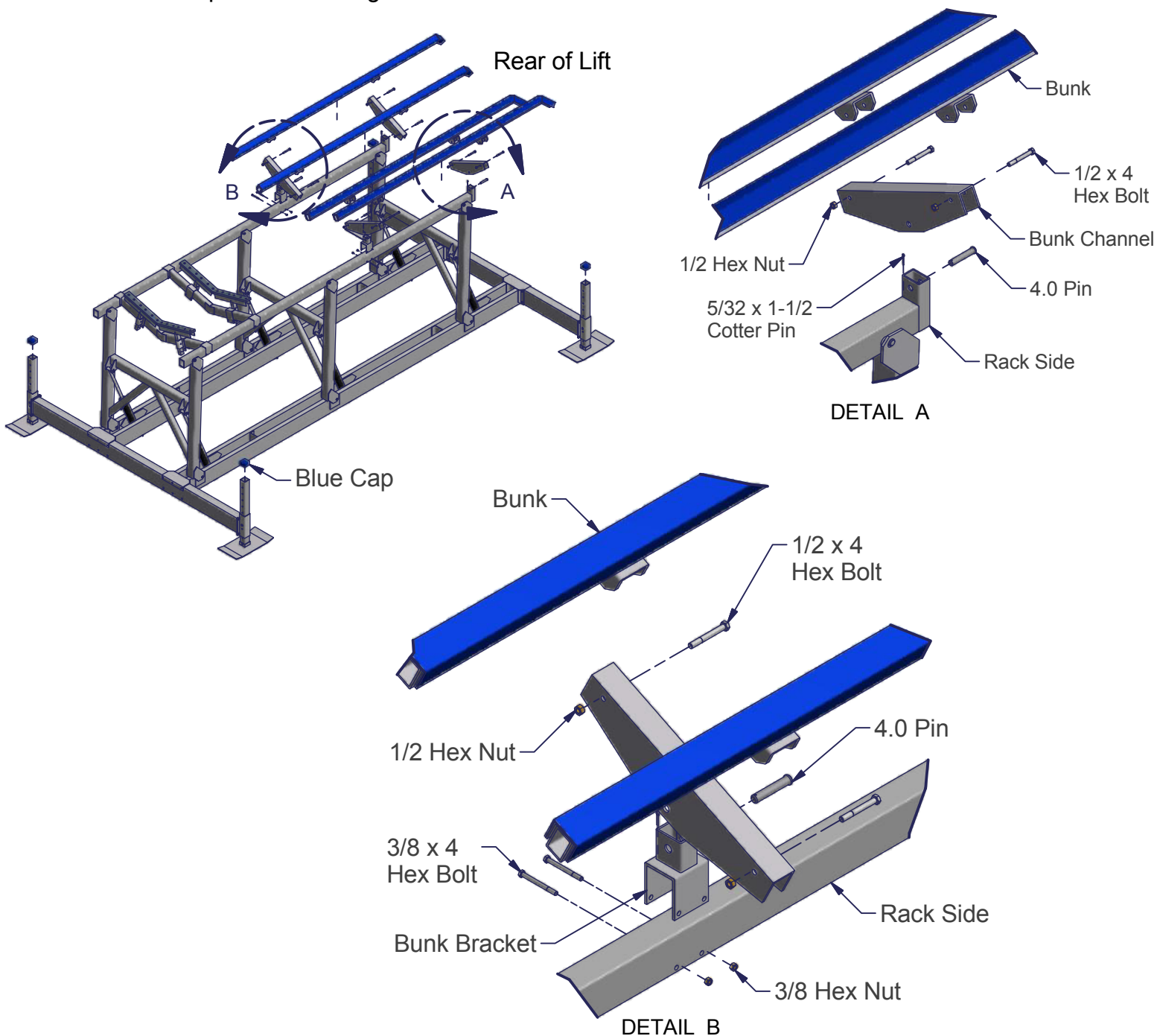
# HYDRAULIC BOAT LIFTS

## STEP 7

Attach bunk brackets to rack sides with two 3/8 x 4 hex bolts and two 3/8 hex nuts per bunk bracket as shown in Detail "B". Attach two bunk brackets to the rack sides and two bunk channels to the rear of rack sides using one 4.0 pin and 5/32 x 1-1/2 cotter pin per bunk bracket as shown in Detail "A". Then attach bunks to the bunk channels and secure with one 1/2 x 4 hex bolt and one 1/2 hex nut in eight places as shown.

**Note:** The bent end of the Bunks must face the Rear of the lift - as shown.

Slide one Blue Cap over each Leg Post - as shown.



## Installation Instructions

### **WARNING**

NOT COMPLYING WITH THE PROCEDURES AND PRECAUTIONS OUTLINED IN THIS MANUAL MAY RESULT IN PERSONAL INJURY OR DEATH AND WILL INVALIDATE THE WARRANTY. Do not under any circumstances, endanger yourself or risk damage to your lift or boat when installing.

-Situations will widely vary between installation sites. ShoreMaster recommends that your dealer, or other trained boat lift installer, train you and perform the initial installation.

-To protect your skin and eyes always wear leather gloves, clothing and safety glasses when assembling and installing the lift.

-Do not assemble, install or use this product if items are missing or damaged.

The following are guidelines or suggestions for installation.

### STEP 1

Measure the water depth of the position you want to locate the lift. Measurements should be taken at both the projected position of the end nearest shore and end furthest from shore.

### STEP 2

Before installing, adjust lift legs so the boat can float into position before raising, while still allowing a high enough position so the boat can be fully raised up and out of the water.

### STEP 3

Carefully place the lift into position alongside the dock so that the hydraulic pump and operating controls can easily be set on the dock. Ask your dealer about a wheel caddy unit to allow your lift to be rolled into position.

### STEP 4

Lake and river bottoms can frequently be uneven. Ensure that your lift is level. Measure the distance from the top of the cross beam to the water surface. The distance at each of the four corners of the lift should be within two inches of each other. If they are not, adjust the legs accordingly.

**Note:** If the lift legs will extend 3 feet or more, ShoreMaster recommends deep water braces to stabilize and strengthen the lift. Ask your dealer for more information.

### **WARNING**

To avoid personal injury or death the lift must be resting on the water bottom in a level, secure, and stable position for safe operation. An unstable lift installation could result in tipping of the lift during operation, causing damage to watercraft and a crushing or pinching injury to the operator or bystanders.

### STEP 5


After loading and operating the lift proceed to the operating instructions, remove the boat, and recheck that the lift remains level.

# HYDRAULIC BOAT LIFTS

## Operating Instructions

### **WARNING**

When first using the boat lift after installation, the weight of the boat may cause the lift to settle and become unbalanced. To avoid personal injury or death, make sure people are not inside, under, or in the immediate vicinity of the lift until you are certain the lift has stabilized.

 **WARNING** NOT COMPLYING WITH THE PROCEDURES AND PRECAUTIONS OUTLINED IN THIS MANUAL MAY RESULT IN PERSONAL INJURY OR DEATH AND WILL INVALIDATE THE WARRANTY. Do not under any circumstances, endanger yourself or risk damage to your lift or boat when installing.

Now that you have installed and leveled the lift, you are ready to raise your boat for the first time. Prior to use, see to it that anyone who may use the lift looks upon the unit not as a toy but a piece of heavy equipment that deserves your respect and good judgment.

- Before allowing anyone to operate the lift, be sure they fully understand the proper operating procedure.
- Do not exceed maximum capacity of the lift; overloading may cause mechanical failure and serious personal injury.
- Do not allow anyone who is in the water within 6 feet of the lift.
- Do not allow anyone on, in, or under the lift while operating.

When operating the lift, the following procedures must be adhered to:

### STEP 1

Be sure the cradles or bunks (sold separately) are positioned below the water surface so they will not interfere with the boat floating into position.

### STEP 2

Properly balance and center the boat on the lift prior to raising. The boat should be positioned with the center of gravity near the middle of the lift. For most rear engine mounted boats, this requires you to position the boat mostly forward in the lift.

### STEP 3


Carefully bring the lift up until the bunks or cradles have secured the boat. Then, stop the lift and check to see that the bunks or cradles have automatically positioned themselves to the shape of the hull, as they are designed to do. If so, continue bringing the boat out of the water until it is about one foot above the surface. Stop the lift again and check the stability of the lift, particularly to see that it is fairly level and will not topple over. Finally, continue lifting the boat while paying close attention to the positioning of the lift until it is in the full upright and over center position.

### STEP 4

After loading and operating the lift, remove the boat and recheck that the lift remains level. (See STEP 4 of the Installation Instructions on previous page). If the lift is not level, the legs should be adjusted accordingly. Because the lift may settle and become unbalanced, the lift levelness should be rechecked two weeks after installation and periodically as needed.

### STEP 5

If the lift is located in an area where swimmers may dive into the water, make sure that they are warned of the lift's location when the boat is not present and the lift is hidden under the water. If you have a remote control device, raise the lift rack out of the water after departing to allow swimmers to see the location of the lift.

 **WARNING** To prevent serious personal injury or death, NEVER go under your boat when it is in the upright position. The lift is not intended as a maintenance platform. Always store your boat in the over center position. The over-center position will help prevent the boat from lowering if you experience a hydraulic leak or slipage.

## Storage and Off-Season Suggestions

Be sure to prevent rainwater from accumulating in your boat if you plan to leave it on the lift for a long-term storage. Rainwater accumulating in your bilge can quickly increase your gross weight over the lift capacity.

1. At all times, make sure that you adjust the height of the lift to limit wave action against the hull. A moving boat as a result of wave action will damage the lift and can take the boat off the lift.
2. ShoreMaster recommends disconnecting the hydraulics box and storing it indoors for the winter, or if you are not planning on using the lift for prolonged periods. To do this, simply disconnect the hoses from your hydraulics box by using the *quick disconnects* and connect the hoses together. This will ensure that the connecting hardware will remain clean.

### **WARNING**

To avoid personal injury or death, do not disconnect the hoses with the boat on the lift or the lift in the upright position. If the hoses are disconnected while the lift is in the upright position or with a boat on the lift, the lift may fall.

TIP: Do not disconnect the hoses when the lift is pressured against the upper or lower stops.

3. Booster-charge your battery using a 10-A charger at the beginning and end of the season. A mid-season boost may be required for heavy use. Prior to performing a booster charge, see the *Battery Tips Section* of the hydraulics box instructions (included with hydraulic box or available on the ShoreMaster website).
4. If your waterway freezes during the winter, you will need to remove your lift, as it will be damaged by ice flows.
5. When storing the boat, the lift must be in the upright over center gravity lock position for maximum safety. The over-center position will prevent the boat from lowering if you experience a hydraulic leak or slippage.
6. Your lift can be left in any position when not in use (without a boat on the lift), although we do recommend leaving the lift in the up position to prevent the bunks from becoming "slimy" and to avoid creating a hidden underwater obstruction.
7. Each spring and fall, inspect nuts and bolts for damage, wear, or loose connections. At the same time, inspect the frame and pivot points for unusual wear, damage, or bent parts. Tighten, repair, or replace parts as needed. ShoreMaster dealers usually offer service visits. Please contact your dealer if you are unable or unwilling to perform maintenance or service to the lift.